

New rules from April 2023 is notified.

"GARBAGE DISPOSAL HANDBOOK"

Please cooperate in garbage reduction and recycling efforts.



KASAMA CITY

SPECIAL EDITION



Kasama city decided to change the rules of separation and collection of garbage from April 2023 in order to make it easier and safer for citizens to dispose of garbage.

This handbook is designed to inform you the new rules of separation and collection clearly.

When you take the garbage out, please read this handbook and cooperate in garbage reduction and recycling efforts.

Thank you.

INDEX

Burnable Garbage	2
Non-Burnable Garbage	3
Recyclables, Category 1	4
Recyclables, Category 2	5
Recyclables, Category 3	6
Harmful Waste, Garbage in special circumstances	7
Oversized garbage	8
Garbage that city does not collect and handle	9
Garbage collection schedule of Tomobe District	10
Garbage collection schedule of Iwama District	11
Garbage collection schedule of Kasama District	12-15
Bringing garbage to The Environment Center	16
Subsidy for purchase of food waste disposal containers, Incentive for separate collection of recyclables, Collection of waste cooking oil, Recycling of small home appliances	17

[Attention]

The contents in this handbook will be applied from April 1, 2023.
Please note that the conventional rules are effect until March 31, 2023.

Burnable Garbage

Garbage dump
each collection site

Make sure to dispose of your garbage by 8 a.m. on the collection day. ※ Do not take it out on the previous day!
Garbage is collected even on the National holidays.

Collection day

(twice a week)

every



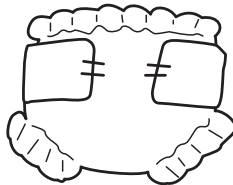
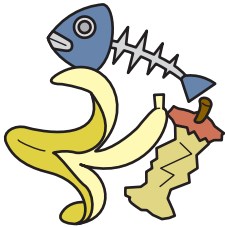
and



*Depends on the district. Please refer to p.10-13 and fill in the blanks.
(Tomobe & Iwama Districts: p.10,11 Kasama District: p.12,13)

Applicable Items (examples)

kitchen garbage, clamshells, plastic items, disposable diapers, leather items, rubber items, paper trash, home medical care waste (without needle attached), etc.



Fee

Burnable Garbage bag(designated)
20L: 100 yen/ 45L: 200 yen (10 bags)

Disposal Method (Cautions)

Put all the garbage in the designated bag and take it out on the collection spot. **Non-designated garbage bag will not be collected.**

Make sure to write your name on the bag.

Oversize one for the designated bag should be classified as Oversized garbage. (refer to p.8)

For kitchen garbage, please drain any liquid before disposal.

For disposable diapers, please remove the filth before disposing. (Please flush the filth down the toilet.)

For used kitchen oil, if it is small amount, please absorb it in paper/cloth or harden it.

For branches, please cut to shorter than 50cm, bundle them within 15cm in diameter and put them in a designated bag.

For a rubber hose, please cut it within 1m50cm in length. For vinyl sheet and blue tarp, please cut into 1m50cm squares or less.

Something in a roll should be stretched and cut within 1m50cm.

*Designated bags are sold at supermarkets, convenience stores, retail stores in Kasama city.



Non-Burnable Garbage

Garbage dump
each collection site

The way of disposing will be renewed from April 1, 2023.

Make sure to dispose of your garbage by 8 a.m. on the collection day. ※ Do not take it out on the previous day!
Garbage is collected even on the National holidays.

Collection day

(once a month)

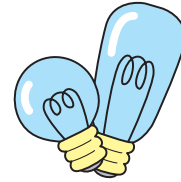
the



*Depends on the district. Please refer to p.10-15 and fill in the blanks.
(Tomobe & Iwama Districts: p.10,11 Kasama District: p.14,15)

Applicable Item (examples)

porcelain, home appliances, light bulbs, glass cups, umbrellas, mirrors, cans for oil and paint, 18-litre cans, razors, iron trash, glass products, etc. *what can be in a designated container (except for recyclables)



Fee

Non-Burnable Garbage Disposal Labels

200 yen (5 labels)

Disposal Method (Cautions)

Place eligible garbage in a designated container (refer to p.11) and stick the Non-Burnable Garbage Disposal Label on the container.

Make sure to write the same name on the container on the label.

(One label can be used to dispose of waste that doesn't spill out of the container and doesn't weigh more than 10kg.)

Garbage that is in a non-designated container and garbage in a designated container without the label attached will not be collected.

One with each side being longer than 50 cm or one oversized for the designated container should be classified as oversized garbage.

Electric cords and wires should be cut within 20 cm and bundled.

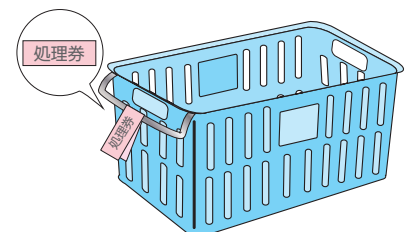
Please remove the cloth from umbrellas. Please dispose of the cloth in "Burnable Garbage".

When disposing of cans and bottles that cannot be disposed of as "Recyclables 1," please empty the contents.

TVs, refrigerators, freezers, air conditioners, washing machines, clothes dryers (items designated by the Home Appliance Recycling Law), and **personal computers** cannot be handled. (refer to p.9).

*Additional container will be charged. (It is sold at Resources recycling division at Main office, Community divisions in the Regional branches.

* Non-Burnable Garbage Disposal Labels are sold at supermarkets, convenience stores, retail stores in Kasama city.



Recyclables, Category 1

Garbage dump
each collection site

The way of disposing will be renewed from April 1, 2023.

Make sure to dispose of your garbage by 8 a.m. on the collection day. ※ Do not take it out on the previous day!
Garbage is collected even on the National holidays.

Collection day

(twice a month)

the

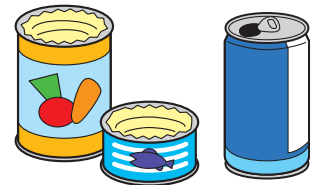
and

*Depends on the district. Please refer to p.10-15 and fill in the blanks.
(Tomobe & Iwama Districts: p.10,11 Kasama District: p.14,15)

Applicable Item (examples)

Cans

cans for beer, juice, milk, confection, canned food and drink



Bottles

bottles for beer, juice, alcoholic beverage, coffee, jam, seasoning, bottled food and drink



Fee

Free

Disposal Method (Cautions)

Place cans and bottles together in a designated container.

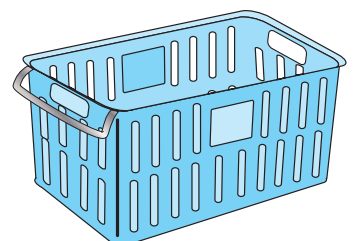
Empty contents and rinse off with water. (If they are dirty, they will not be collected.)

Make sure to remove the lids of bottles. (Metal lids are "Non-Burnable Garbage". Plastic lids are "Burnable Garbage".)

Garbage that is in non-designated container will not be collected.

Rusty cans, dirty cans/bottles, and cans/bottles that contain non-food oil should be disposed of as "Non-Burnable Garbage".

*Additional container will be charged. (It is sold at Resources recycling division at Main office, Community divisions in the Regional branches.)



Recyclables, Category 2

Garbage dump
each collection site

The way of disposing will be renewed from April 1, 2023.

Make sure to dispose of your garbage by 8 a.m. on the collection day. ※ Do not take it out on the previous day!
Garbage is collected even on the National holidays.

Collection day
(twice a month)

the

and

*Depends on the district. Please refer to p.10-15 and fill in the blanks.
(Tomobe & Iwama Districts: p.10,11 Kasama District: p.14,15)

Applicable Item (examples)

Plastic bottles with the recycling mark

plastic bottles for juice, soft drink, water, soy source, alcoholic beverage, etc.



Fee

Free

Disposal Method (Cautions)

Place them in a designated container.

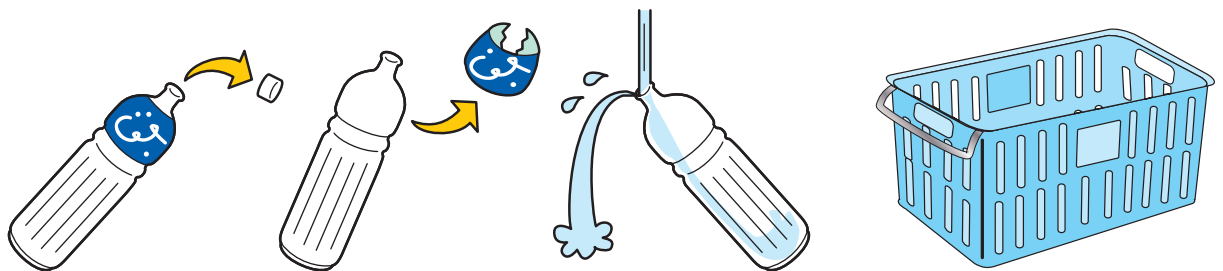
Remove labels, empty contents, and rinse off with water. (If they are dirty, they will not be collected.)

Make sure to remove the lids. (Metal lids are " Non-Burnable Garbage". Plastic lids are "Burnable Garbage".)

Plastic bottles without the recycling mark should be disposed of as "Burnable Garbage".

Garbage that is in non-designated container will not be collected.

*Additional container will be charged. (It is sold at Resources recycling division at Main office, Community divisions in the Regional branches.)



Recyclables, Category 3

Garbage dump
each collection site

The way of disposing will be renewed from April 1, 2023.

Make sure to dispose of your garbage by 8 a.m. on the collection day. ※ Do not take it out on the previous day! Garbage is collected even on the National holidays.

Collection day
(twice a month)

the and

*Depends on the district. Please refer to p.10-15 and fill in the blanks.
(Tomobe & Iwama Districts: p.10,11 Kasama District: p.14,15)

Applicable Item (examples)

Paper cardboard, newspapers, magazines, flyers, milk cartons



Foam trays food trays made with foamed styrene



Cloth clothing (jackets, trousers, shirts, sweaters, underwear), sheets, handkerchiefs



Spray cans hair spray, paint spray, gas cartridge



Fee

Free

Disposal Method (Cautions)

Bundle cardboard, newspapers, magazines (flyers), and milk cartons crosswise with string for each type, and place them in a designated container.

If they do not fit in the container, leave the bundled items at the collection site.

Milk cartons should be opened, rinsed off with water, and dried before putting them out.

Foam trays should be rinsed off with water, and dried before putting them out.

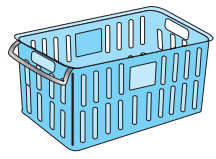
Foam trays, cloths, and spray cans should be placed in clear or semi-transparent bags by type, in the state of that the contents can be identified, and put in the designated containers. (Designated bags are not necessary.)

If they are dirty, they will not be collected.

*Additional container will be charged. (It is sold at Resources recycling division at Main office, Community divisions in the Regional branches.)

Please try not to dispose of these items when it rains as much as possible. (If you dispose of them when it rains, make sure they do not get wet or dirty.)

For spray cans, use up all the contents and make sure to make holes in the cans. (When you make holes, please do it outdoors, well-ventilated, fire-free.)



Recyclables, Category 3

Harmful Waste

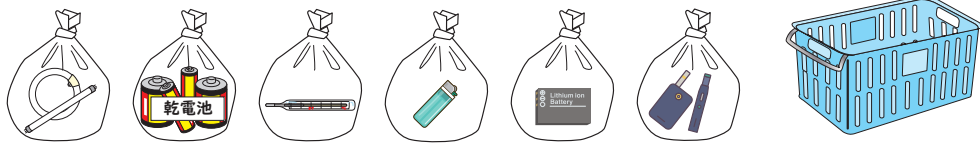
The way of disposing will be renewed from April 1, 2023.

Make sure to dispose of your garbage by 8 a.m. on the collection day. ※ Do not take it out on the previous day!
Garbage is collected even on the National holidays.

Collection day the same collection day as "Recyclables 3"
(twice a month)

Applicable Item (examples)

fluorescent lamps, dry batteries, thermometers (mercury type), disposable lighters, small rechargeable batteries and products using rechargeable battery system (mobile batteries, heated tobacco products, etc.)



Fee

Free

Disposal Method (Cautions)

Place them in a designated container and dispose of them on the same collection day as "Recyclables 3".

Fluorescent bulbs should be in the original cases or other containers and bundled.

Dispose of broken items, light bulbs, glow lamps, and LED bulbs as " Non-Burnable Garbage" .

Place each type in a transparent or semi-transparent bag so that the contents can be identified.

*Small rechargeable batteries should be insulated by placing tape over the terminals.

*If the batteries cannot be easily removed, such as mobile batteries, please dispose of them as they are.

*For lead storage batteries (bicycle batteries, etc.), ask a specialized company to collect.

*Small rechargeable batteries: lithium-ion batteries, nickel-hydrogen batteries, nickel-cadmium batteries, mobile batteries

*Additional container will be charged. (It is sold at Resources recycling division at Main office, Community divisions in the Regional branches.

Waste in special circumstances

Temporary high-volume garbage
(temporary garbage from moving and other)

→ Please bring them to The Environment Center by yourself (refer to p.16)

Business-related Garbage

Garbage generated from business activities other than industrial waste.

→ Please ask a contractor licensed by the city or bring your own waste to Kasama Environment Center. Industrial waste cannot be brought in. You can check the city's licensed contractors on the website.



Oversized garbage (door-to-door collection)

The way of disposing will be renewed from April 1, 2023.

Collection day

(once a week)

Tomobe District: every Wednesday

Iwama and Kasama Districts: every Thursday

*Garbage is collected even on the National holidays.

*If you bring it to Kasama Environment Center by yourself, please refer to p.16.



Application spots

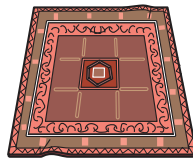
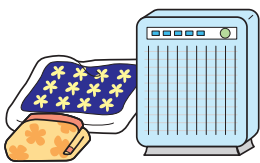
Tomobe District: Resources recycling division at Main office

Iwama District: Community division in Iwama regional branch

Kasama District: Community division in Kasama regional branch

Applicable Item (examples)

home appliances, bicycles, heaters, gas ranges, galvanized-iron, furniture, bedding, tatami mats, carpets, etc.



Fee

Oversized garbage disposal label (Small 500 yen, Large 1,000 yen)

Disposal Method (Cautions)

Apply in person to a counter and purchase an oversized garbage disposal label. If the total length of three sides (length, height, and width) of the item is less than 3m, it is considered small. If more than 3m, it is considered large. **(Please measure the three sides and make a note of it in advance and bring it with you.)**

Stick the label on an easily visible place of the garbage, and put it out by 8a.m. on the day designated by the city in a yard, parking lot, or other easily accessible place for loading.

The maximum number of garbage items per application is 3.

When disposing of a home appliance, cut the cords from the source and handle them as " Non-Burnable Garbage".

When disposing of an oil stove, empty the fuel completely.

When you replace home appliances, please ask the store of purchase to pick the old one up.

Televisions, refrigerators, freezers, air conditioners, washing machines, clothes dryers (items designated by the Home Appliance Recycling Law) and **personal computers** cannot be handled in this category. (refer to p.9)

Oversized garbage (door-to-door collection)

Garbage that city does not collect and handle

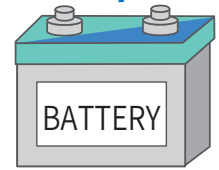
Tires

Consult a tire specialty store.



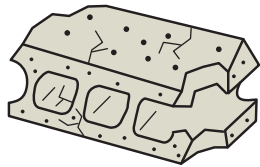
Main bodies and parts of automobiles, motorcycles, agricultural machinery, and pleasure boats

Consult your dealer or trader.



Concrete waste

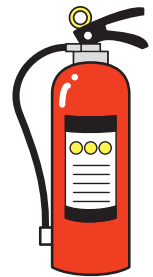
Consult a disposal company that can handle concrete.



Fire extinguishers

Consult the store of purchase. If you do not know where to purchase, contact the following.

Eco Cycle Center: Toll Free 0120-822-306

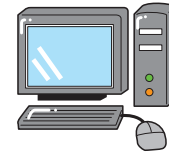


PCs and Displays

Items with the PC recycling mark will be collected and recycled by the PC manufacturer.

Contact the manufacturer of the PC to be disposed of.

For those without a PC recycling mark, refer to the website of the PC3R Promotion Council.

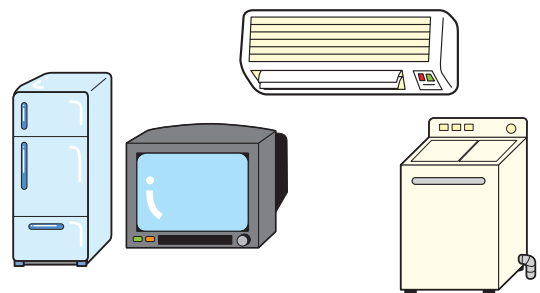


PC3R Promotion Council

TVs, air conditioners, refrigerators, freezers, washing machines, clothes dryers

The above home appliances are subject to the Home Appliance Recycling Law and must be recycled.

Consult the store of purchase. If you do not know where to purchase, please contact your local electronics retailers.



Agricultural vinyl

Please contact Kasama agricultural administration division.



Tomobe District Garbage Collection Schedule

◎ Garbage is collected even on the National holidays.

Course	Collection district	Burnable	Non-burnable	Recyclables, Category1	Recyclables, Category2	Recyclables, Category3, Hazardous Waste	Oversized garbage
A	下市原・中市原・上市原 1、2・滝川 1、2・香取・新宿・久保下寺・館古宿・本内・原坪・筒埞・小原団地・鴻巣 1・こうのす団地・宿 1、2・原店 1、2・久保・古山・県営友部アパート・宮前 1、2・上町・中町・下町・橋爪 1、2・旧陣屋 1、2、3・八反山・小人町・星山・大田町 1、2・松山団地 1、2、3・松山南団地・県営松山アパート	every Mon., Thu.	4th Wed.	1st, 3rd Tue.	2nd, 4th Tue.	1st, 3rd Fri.	every Wed.*
B	矢野下（上郷、藤株、下郷）・ベリオ・コリナ会区・大古山・南小泉 1、2、3・下加賀田・原団地・清住町・若狭山団地・八雲 1～2 丁目・八幡台 1、2・八幡下・中央 1～4 丁目・大沢上 1、2、3	every Mon., Thu.	3rd Wed.	2nd, 4th Tue.	1st, 3rd Tue.	2nd, 4th Fri.	
C	友部駅前・鴻巣 2・東平 1～4 丁目・美原 1～4 丁目・青葉町・東ヶ丘区・西飯田・富士町・内郷・西内郷・飯田 1、2、3・大沢下 1、2・大沢中 3・柿橋西区・中区・北区・南区・東区・柿橋団地	every Tue., Fri.	2nd Wed.	1st, 3rd Thu.	2nd, 4th Thu.	1st, 3rd Mon.	
D	旭台・旭台団地 1、2、3、4・旭平 1、2・旭平団地・サンステージ区・緑丘団地・旭崎 1、2・西原・睦団地・西原住宅班・旭丘団地・旭団地・西脇・長野・住吉団地・RG 風の杜・みどり野団地・石沢・田向・湯崎・住吉新宿・住吉本宿・随分附本郷・随分附笠松・柏井・柏井団地・旭丘・仁古田東部・仁古田西部・下長兎路・岱長兎路・長兎路 3・東原・アクシーズタワー旭台・グリーンウッド・白百合区	every Tue., Fri.	1st Wed.	2nd, 4th Thu.	1st, 3rd Thu.	2nd, 4th Mon.	

*door-to-door collection by application at the counter of Kasama city Resources recycling division

The concept of "the ○ th (Monday-Saturday) day of the week"

The collection days for Non-Burnable Garbage/Recyclables are written as the "○ th (Mon. - Sat.) day of the week".

Depending on your calendar, the fifth week of the previous month may be written, and it may be difficult to tell which week today is.

When you dispose of Non-Burnable Garbage and Recyclables, please judge by **how many "days of the week" that day falls in the current month.**

(examples)

Monday, November 28, 2022 ... "the fifth" Monday ←Collection is not conducted.

Monday, December 5, 2022 ... "the first" Monday

Monday, December 12, 2022 ... "the second" Monday

Monday, December 19, 2022 ... "the third" Monday

Monday, December 26, 2022 ... "the fourth" Monday

Iwama District Garbage Collection Schedule

◎ Garbage is collected even on the National holidays.

Course	Collection district	Burnable	Non-burnable	Recyclables, Category1	Recyclables, Category2	Recyclables, Category3, Hazardous Waste	Oversized garbage
A	旭町東・旭町西・上町・中町・栄町・参り坂・愛宕団地・北根中	every Mon., Thu.	2nd Wed.	1st, 3rd Fri.	2nd, 4th Fri.	1st, 3rd Wed.	every Thu. *
B	日吉町・日吉町西・春日町・春日1・吉岡1、2・吉岡住宅・南春日町・東町1・北根東2・第1東宝ランド・第2東宝ランド・ビレッジハウス(旧・雇用促進住宅)・白旗ニュータウン・ヘルシータウン・寿・仲田住宅・春日町大越住宅	every Mon., Thu.	3rd Wed.	2nd, 4th Fri.	1st, 3rd Fri.	2nd, 4th Tue.	
C	横関・滝尻1、2・古山・室野・堂山・茅生・東組・花園・長沢・大久保・日向内・仲通・大古沢・駒場・大篠・日向・大網・北根西・五霊・平・山根(南、北)・市野谷(上、中、下)・中村・北根東1・光泉寺泉ミサワホーム	every Tue., Fri.	4th Wed.	1st, 3rd Mon.	2nd, 4th Mon.	1st, 3rd Wed.	
D	新渡戸・白旗ヒルズ・土師・上押辺・下押辺・上安居・下安居・吉沼・安居東部・狹倉・東大牧場・桐山西部・桐山東部・福島・小島・谷原	every Tue., Fri.	1st Wed.	2nd, 4th Mon.	1st, 3rd Mon.	2nd, 4th Wed.	

*door-to-door collection by application at the counter of Community division in Iwama regional branch

【Tomobe and Iwama Districts】 Regarding containers for Recyclables/ Non-Burnable Garbage collection

～ White and green containers can be used as well. ～

Before, in Tomobe/Iwama Districts, white containers were used for collection of Recyclables and green containers were used for collection of Non-Burnable Garbage, but in June 2020, they were replaced by blue containers.

Currently, regardless of the color of the container, recyclables and Non-Burnable Garbage can be disposed of in white, green, and blue containers.



Kasama District Garbage Collection Schedule

◎ Garbage is collected even on the National holidays.

○ Monday and Thursday course

The yellow colored area of the map (p.13)

and ..

4区 (新堤及び50号線沿い)、大橋 (28～33区)、
池野辺 (35～38区)、福田 (41～45区)、飯田 (50区)、福原 (101～109区)、
飯合・稲田地区の50号北側

○ Tuesday and Friday course

The green area of the map (p.13)

and ..

23区、中地原 (62区)、寺崎 (67～67-1区)、金井 (70区)、
大淵 (71～74区)、本戸 (75～79区)、来栖 (80～82-1区)、
北吉原 (83区)、南吉原 (84区)、手越 (85区)、
上加賀田 (86区)、飯合・稲田地区の50号南側

○ Wednesday and Saturday course

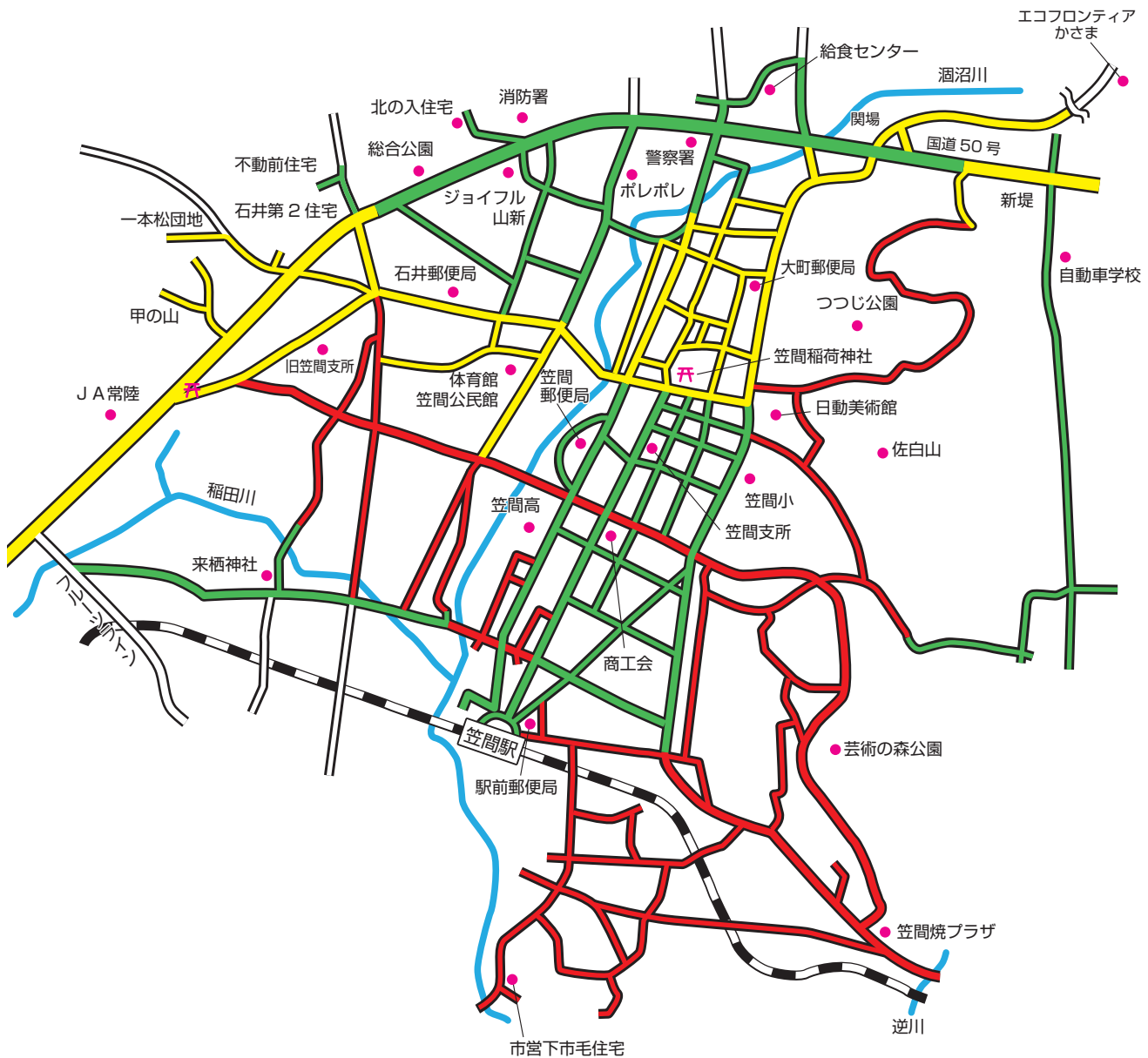
The red area of the map (p.13)

and ..

大郷戸 (51区)、片庭 (54～58区)、
箱田 (60区～61区、63～66区)、日沢 (68区)、石寺 (69区)

For the area allocations by color, please refer P.13.

Allocation Area Map for Burnable Garbage



[Kasama District] Garbage collection on Holidays

In Kasama District, garbage will be collected on the National holidays as well from April 2023.

Make sure to dispose of your garbage by 8 a.m. on the collection day. (There will be no substitute collection.)

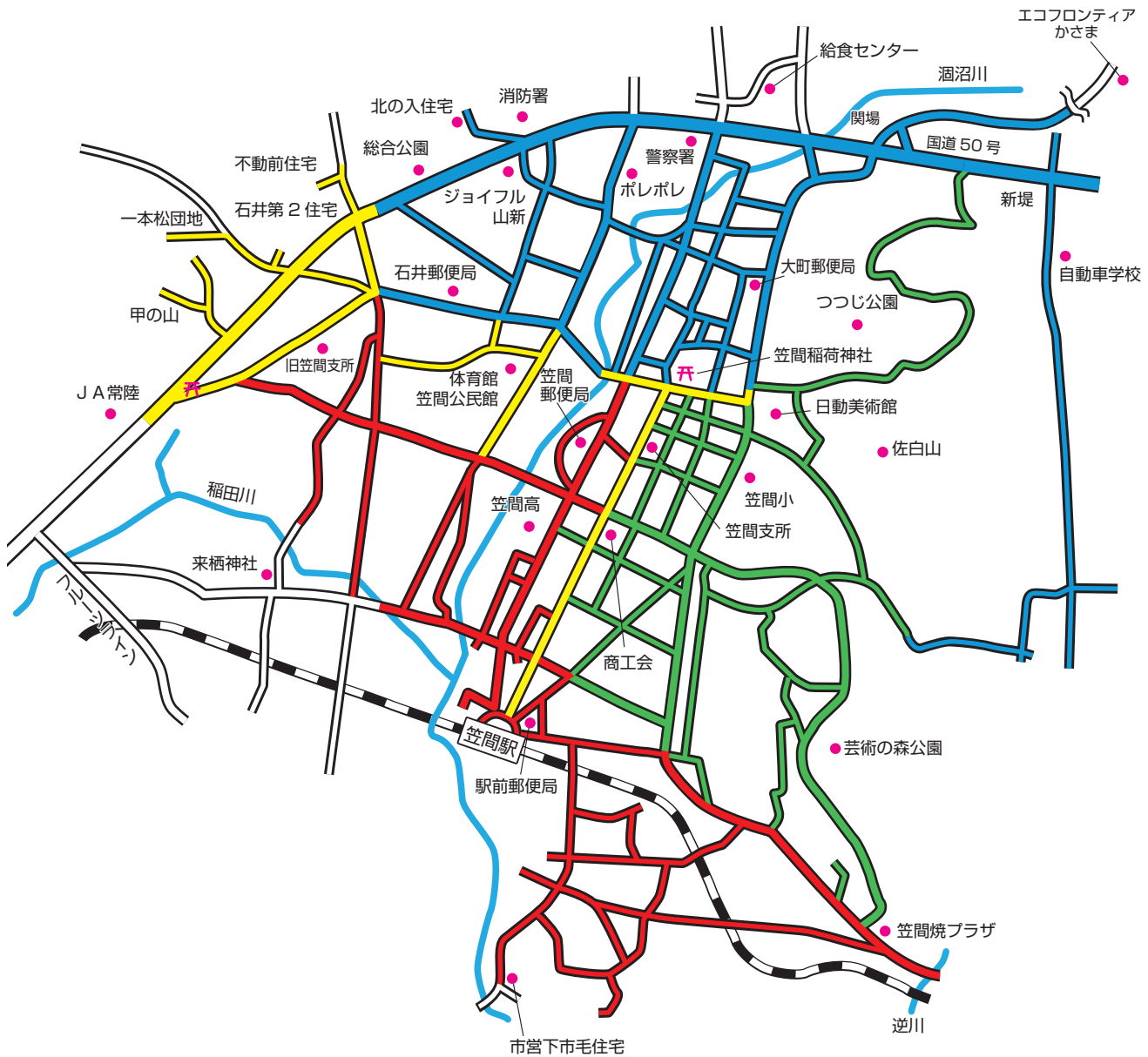
Non-Burnable Garbage, Recyclables Collection Schedule

◎ Garbage is collected even on the National holidays.

Type of garbage District	Non-burnable	Recyclables, Category1	Recyclables, Category2	Recyclables, Category3, Hazardous Waste	Oversized garbage
P.15 The yellow colored area	1st Sat.	2nd, 4th Mon.	1st, 3rd Fri.	2nd, 4th Fri.	every Thu. *
28 区～ 45 区	2nd Sat.		1st, 3rd Thu.	2nd, 4th Thu.	
P.15 The blue colored are	1st Fri.	2nd, 4th Tue.	1st, 3rd Wed.	2nd, 4th Wed.	
50 区、71 区～ 74 区	2nd Fri.		1st, 3rd Thu.	2nd, 4th Thu.	
51 区～ 67 区、68 区～ 70 区 (北の入住宅は除く)	1st Thu.	2nd, 4th Wed.	1st, 3rd Thu.	2nd, 4th Thu.	
P.15 The red colored area	2nd Thu.		1st, 3rd Fri.	2nd, 4th Fri.	
P.15 The green colored area	1st Wed.	2nd, 4th Thu.	1st, 3rd Wed.	2nd, 4th Wed.	
75 区～ 82-1 区	2nd Wed.		1st, 3rd Mon.	2nd, 4th Mon.	
飯合・稲田全域	1st Tue.	2nd, 4th Fri.	1st, 3rd Tue.	2nd, 4th Tue.	
83 区～ 86 区	2nd Tue.		1st, 3rd Mon.	2nd, 4th Mon.	
101 区～ 104 区	1st Mon.	2nd, 4th Sat.	1st, 3rd Tue.	2nd, 4th Tue.	
105 区～ 109 区	2nd Mon.				

*door-to-door collection by application at the counter of Community division in Kasama regional branch

Allocation Area Map for Non-Burnable Garbage and Recyclables



[Kasama District] Abolition of Central collection site

In Kasama District, plastic bottles, foam trays, paper cartons, and cloths used to be collected at the central collection site, but from April 1, 2023, the central collection site will be abolished and garbage collection will be conducted at the local collection sites. The central collection site at the former Kasama Branch Office (Ishii District) will also be discontinued. Please dispose of your garbage at the same local collection site as Burnable Garbage on the designated days of the week.

How to bring garbage to The Environment Center

How to bring household waste to The Environment Center.

◎ Kasama city Environment Center (location: 1-162, Nagatoro Nikoda Iriaichi, Kasama-city)

When: Monday - Friday (Closed on Saturday, Sunday, Holiday and new year) *

Time: 9a.m - noon / 1 - 5p.m.

Fee: Regardless of the garbage category, 100 yen per 10kg
(Even if it is less than 10kg, it costs 100 yen.)

*Please present something to identify your address (e.g. driver's license) at the reception desk in order to confirm where the garbage came out.

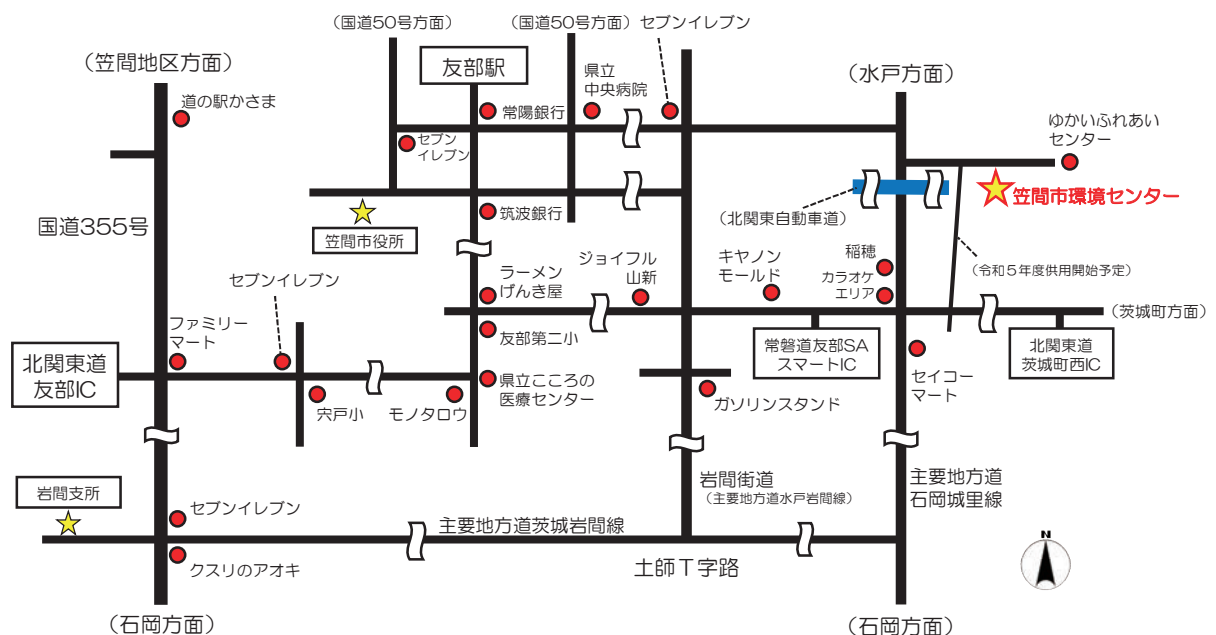
*Be sure to separate garbage properly before bringing it in.

*If you have any questions about what you are bringing in, please contact The Environment Center in advance.

*When bringing in Burnable Garbage, you do not need to use the designated garbage bags (pink bags). Please use bags whose contents can be checked.

*Industrial waste cannot be brought into The Environment Center.

Location Map of The Environment Center



Contact

Kasama city Environment Center
0296-77-2416





Subsidy for purchase of food waste disposal containers

In order to reduce food waste from households, Kasama city subsidizes part of the cost of purchasing food waste disposal containers, etc. (electric garbage disposal machine, compost, EM bokashi containers). (As of January 2023)

For more information on conditions for the grant and application procedures, check from the QR code. (The website is written in Japanese only.)

Incentive for separate collection of recyclables



If you register as a group for separate collection of recyclables and collect recyclables at least twice a year as part of your activities, you will receive an incentive grant according to the number of recyclables you collect. Let's expand the circle of the recycling campaign by actively participating in the activities of the resource sorting and collection groups in your district.

Collection of waste cooking oil

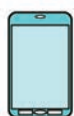


Waste cooking oil is collected for the purpose of garbage reduction, resource recycling, and environmental preservation of rivers and other waterways. Please put it in plastic bottles or other containers and bring it to Resources recycling division at Main office or Community divisions in the Regional branches.

Recycling of small home appliances



Small home appliances such as cell phones and digital cameras contain many valuable metal resources. Kasama City is working to collect small home appliances.



Applicable Item (31 items)

*As of January 2023

digital cameras, game consoles, AC adapters, calculators, electronic notebooks, portable music players, video cameras, cell phones and smartphones, car navigation systems, radios, routers and switches, IC recorders, hearing aids, portable DVD/BD recorders/players, electronic book devices, laptops, tablet devices, magnetic disk drives(hard disks, USB memory sticks, memory cards), video game software (excluding CDs and DVDs), electronic thermometers, electric thermo-hygrometers, electronic health meters, electronic baby scales, digital pedometers, film cameras, hair dryers, electric razors, electric epilators, electric toothbrushes, electronic clocks

*Including accessories such as remote controllers, chargers, and rechargeable batteries.

Please bring it in person to a counter of Resources recycling division at Main office, Community divisions in the Regional branches.

*Reception hours is when the office is open on weekdays. (8:30a.m. to 5:15p.m)

[Cautions]

Make sure to erase all personal information before bringing.

Please remove batteries.

In order to prevent danger, please refrain from bringing disassembled home appliances.

Please cooperate for recycling small appliances!

Subsidy for purchase of food waste disposal containers, Incentive for separate collection of recyclables, Collection of waste cooking oil, Recycling of small home appliances

MEMO

*The illustrations in this booklet are mainly from those published by the Ministry of Economy, Trade and Industry.

KASAMA CITY GARBAGE DISPOSAL HANDBOOK

Publisher / Resources Recycling Division, Department of
Civic Life, Kasama City

3-2-1, Chuo, Kasama, Ibaraki TEL 0296-77-1101



Issued on January 2023