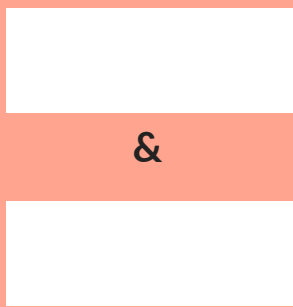


# GARBAGE SEPARATION AND DISPOSAL

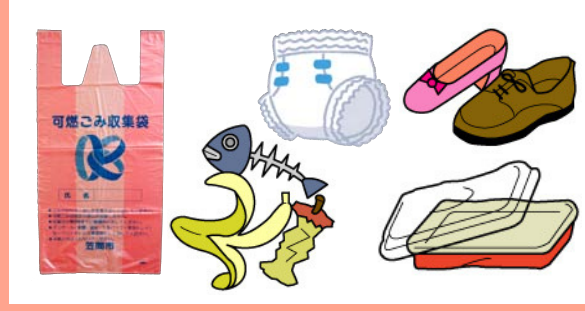
Please put garbage out on collection day by 8am.  
Recyclable collection is free if you separate it.  
Please help to Reduce, Reuse and Recycle.

## BURNABLES

### Pickup days



Food scraps, plastic, rubber goods, paper, etc.



Use designated red garbage bags.

- Use designated garbage bags, label with your name, and set out.
- Drain food scraps well.
  - Soak small amounts of cooking oil in paper towels or cloth before disposing.
  - Remove excretions before disposing of paper diapers.
  - Cut trees or branches into pieces 15cm in diameter and 50cm in length or less.
  - Garbage larger than the designated bag is considered bulk garbage.
  - Purchase designated red garbage bags at participating supermarkets, and shops.

## NON-BURNABLES

### Pickup day



Ceramics, glass, light bulbs, umbrellas, mirrors, razorblades, small electronics, items not listed as non-burnables not listed as recyclables.



Use the designated green container

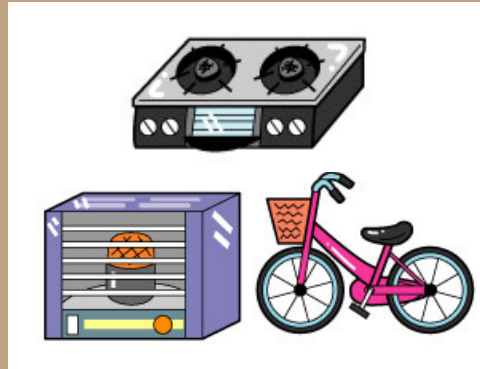
- All non-burnable garbage goes in designated green containers.
- Attach one disposal ticket to the green container, write your name on the ticket, and fill container with up to 10kg of non-burnable garbage.
  - Non-burnable garbage without a disposal ticket or not in a designated container will not be collected.
  - Cut wire or electrical cords into 20cm or less.
  - Remove fabric from umbrellas.
  - Garbage longer than 50cm or cannot fit in the container is considered bulk garbage.

## BULK GARBAGE

### Pickup day

Arrange pickup dates at the city hall or branch office.

Large appliances, bicycles, carpets, gas stoves, furniture, tatami, corrugated sheet metal, etc.



Your designated collection area or drop off at "Kankyo Center"

- Purchase disposal tickets for bulk garbage and make pickup requests at Kasama City Hall's Environmental Conservation Division, or Iwama District Branch Community Division. (Or drop off bulk garbage at the "Kankyo Center" garbage disposal facility.)
- "Small" items (L+W+H<3m) require 1 disposal ticket. "Large" items (L+W+H≥3m) require 2 disposal tickets per item.
  - Put out your garbage for pickup on the date as indicated on your bulk disposal ticket.
  - You may request pickups for up to 3 items at a time.
  - Fully drain/empty kerosene heaters.
  - Cut corrugated sheet metal into 1.8m squares (or less) and tie together in stacks of 5.
  - Cut off electric cords from appliances and dispose as non-burnables in pieces <20cm.
  - Certain appliances (TVs, refrigerators, freezers, A/C units, washing machines, dryers, and computers) must be taken to a recycling center, or returned to a dealer.

## RECYCLABLES (1)

### Pickup days



Cans and glass bottles (for drinks, foods, and seasonings)

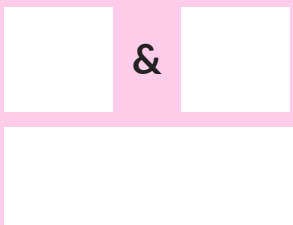


Use the designated white container

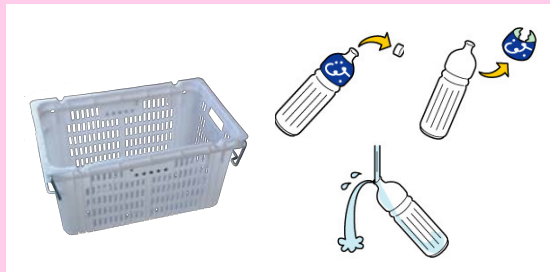
- All cans and bottles go in the designated white containers.
- Remove all bottle caps. (Metal caps go into the non-burnables container green, and plastic caps go in burnable garbage.)
  - Empty out cans and bottles and rinse with water.
  - Cans or bottles that contained oil are to be disposed of as burnable garbage.

## RECYCLABLES (2)

### Pickup days



Plastic (PET) bottles.

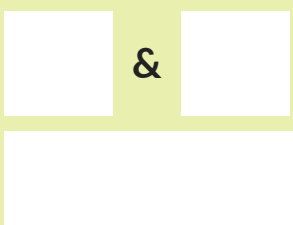


Use the designated white container

- All plastic (PET) bottles go in the white container
- Empty all plastic (PET) bottles, remove caps and labels, and rinse with water.
  - Remove all bottle caps. (Dispose of plastic caps in burnable garbage.)

## RECYCLABLES (3)

### Pickup days



Cardboard, newspaper, magazines, drink cartons, styrofoam trays, spray cans.



Use the designated white container.

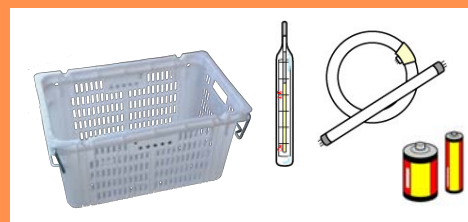
- Separate cardboard, newspapers, magazines (pamphlets etc.), drink cartons, tie each type together, and put in the white recyclables container.
- Cut open, rinse, and dry milk cartons.
  - Rinse and dry styrofoam trays.
  - Puncture a hole in each spray can after emptying its contents.
  - Put styrofoam trays, spray cans, and clothing in separate clear bags, and label each bag with its contents. Then place them in the recyclables white container.
  - Refrain from setting out any garbage when it is raining.
  - If items don't fit in the container, stack and tie them together neatly, and leave them in the collection area.

## HAZARDOUS GARBAGE

### Pickup days

Same day as Recyclables (3)

Flourescent bulb, alkaline batteries, mercury thermometers



Use the designated white container and put together with Recyclables (3)

- All hazardous garbage goes in the white recyclables container with "Recyclables (3)" and will be collected on the same day.
- Put used flourescent bulbs into the box you bought them in and tie them together.
  - Return nickel-cadmium batteries to the dealer, or a recycle shop.
  - Put alkaline batteries and mercury thermometers into separate clear bags and label each bag with its contents.

Registered recyclable collection organizations that conduct activies twice a year may receive 5yen/kg of subsidy funds. Please cooperate with local recycling organizations and support the recycling movement.

## GARBAGE NOT COLLECTED

- Gasoline, flammable fuels, fire extinguishers, medical waste, tires, rims, construction waste, car batteries and parts, motorcycles, ashes, sand, gas cannisters, fertilizer, paint, excess amounts of styrofoam or plastic, TVs, refrigerators, A/C units, washing machines, dryers.
- (Bring these items to 2nd hand shops, or use professional services to dispose.)

- Irregular excesses of garbage due to moving, etc. → Contact the "Kankyo Center" to drop off garbage directly. Garbage separation is still required.
- Excess garbage due to business or industrial related activities → Dispose of your garbage through city certified professional services, or bring in directly to the "Kankyo Center." Do not put out for normal collection.

## INQUIRIES

〈Tomobe District〉 Kasama City Hall  
(Environmental Conservation Division)  
0296-77-1101

〈Iwama District〉 Kasama City Hall Iwama Branch  
(Community Division)  
0299-37-6611

"Kankyo Center" Garbage Disposal Facility  
0296-77-2416

## "KANKYO CENTER" Garbage Disposal Facility

【Hours】 Monday~Friday

9AM~12PM

1PM~ 5PM

- Purchase designated (red) bags (20ℓ/45ℓ), and non-burnable disposal tickets at participating stores.
- Purchase extra (white) and (green) designated containers at the City Hall.



## Garbage Pickup Schedule (Tomobe and Iwama Districts)

Tomobe District							
Course	Collection Area Name	Burnables	Non-Burnables	Recyclables (1)	Recyclables (2)	Recyclables (3)	Bulk Garbage
A	Shimoichibara, Nakaichibara, Kamiichibara 1&2, Takigawa 1&2, Katori, Shinjuku, Kuboshitadera, Tachifurujuku, Motouchi, Haratsubo, Tsutsubana, Obaradanchi, Kounosu 1, Kounosudanchi, Shuku 1&2, Haranotana 1&2, Kubo, Koyama, Keneitomobeapa-to, Miyamae 1&2, Kaminochi, Nakanochi, Shimonochi, Hashizume 1&2, Kyuujinya 1-3, Hattanyama, Kobitocho, Hoshiyama, Ootamachi 1-3, Matsuyamadanchi 1-3, Matsuyama-minamidanchi, Keneimatsuyamaapa-to	Mon. and Thurs.	4th Weds.	1st and 3rd Tues.	2nd and 4th Tues.	1st and 3rd Fri.	Bulk Garbage pickup (from your home) by request Dates are arranged at time of request. Make requests at Kasama City Hall Main Office (Environmental Conservation Division)
B	Yanoshitakamigo, Fujikabu, Shimogo, Beriokorina-kaiku, Oogoyama, Minamikoizumi 1-3, Shimokagata, Haradanchi, Kiyomizumicho, Wakasayamadanchi, Yakumo 1-2 Chome, Hachimandai 1-2, Hachimanshita, Chuo 1-4, Osawakami 1-3	Mon. and Thurs.	3rd Weds.	2nd and 4th Tues.	1st and 3rd Tues.	2nd and 4th Fri.	
C	Tomobe-ekimae, Konosu 2, Higashidaira 1-4 Chome, Mihara 1-4 Chome, Aobacho, Higashigaokaku, Nishiida, Fujicho, Uchigo, Nichiuchigo, Iida, Osawashimo 1-2, Owasanaka 3, Kakihashinishiku, Nakaku, Kitaku, Minamiku, Higashiku, Kakihashidanchi	Tues. and Fri.	2nd Weds.	1st and 3rd Thurs.	2nd and 4th Thurs.	1st and 3rd Mon.	
D	Asahidai, Asahidaidanchi 1-4, Asahidaira 1-2, Asahidairadanchi, Sansute-jiku, Midorigaokadanchi, Asahizaki 1-2, Nishihara, Mutsumidanchi, Nishiharajutakukuhan, Asahigaokadanchi, Asahidanchi, Nishikyo, Nagano, Sumiyoshidanchi, RGKazenomori, Minorinodanchi, Ishizawa, Tamukai, Yuzaki, Sumiyoshiarajuku, Motojuku, Namusanzukehongo, Shinden, Kashiwai, Kashiwaidanchi, Asahigaoka, Nikotatoubu, Seibu, Shimonagatoro, Dainagatoro, Nagatoro 3, Higashihara, Akushizutawa-asahidai, Guri-nuddo, Shirayuriku, Konfo-totaunnishihara	Tues. and Fri.	1st Weds.	2nd and 4th Thurs.	1st and 3rd Thurs.	2nd and 4th Mon.	

Iwama District							
Course	Collection Area Name	Burnables	Non-Burnables	Recyclables (1)	Recyclables (2)	Recyclables (3)	Bulk Garbage
A	Asahicho-higashi, Asahicho-nishi, Kamicho, Nakacho, Sakaecho, Mairizaka, Kitanenaka, Atagodanchi	Mon. and Thurs.	2nd Weds.	1st and 3rd Fri.	2nd and 4th Fri.	1st and 3rd Weds.	Bulk Garbage pickup (from your home) by request Dates are arranged at time of request. Make requests at Kasama City Hall Iwama Regional Branch, (Community Division)
B	Hiyoshicho, Kasugacho, Yoshioka, Minamikasugacho, Higashicho, Kitanehigashi 2, Kasuga 1, Daiichitohorando, Koyosokushinjutaku, Shirahatanyu-taun, Herushi-taun, Kotobuki	Mon. and Thurs.	3rd Weds.	2nd and 4th Fri.	1st and 3rd Fri.	2nd and 4th Tues.	
C	Yokozeiki, Takijiri, Koyama, Muro, Doyama, Chibu, Tokumi, Hanazono, Nagasawa, Ookubo, Hyokkoji, Nakadori, Daikozawa, Komaba, Hyuga, Daiami, Kitanenishi, Goryo, Taira, Yamane, Ichinoya, Nakamura, Kitanehigashi 1, Kosenjiizumi, Misawaho-mu, Oshino	Tues. and Fri.	4th Weds.	1st and 3rd Mon.	2nd and 4th Mon.	1st and 3rd Weds.	
D	Niwatsudo, Haji, Kamioshinobe, Shimooshinobe, Kamiago, Shimoago, Yoshinuma, Agotobu, Manaitagura, Todaibokujo, Kunugiyamaseibu, Kunugiyamatobu, Fukushima, Kojima, Yawara, Shirahatahiruzu	Tues. and Fri.	1st Weds.	2nd and 4th Mon.	1st and 3rd Mon.	2nd and 4th Weds.	

Bulk Pickup Requests
<p>Please check dimensions before making a pickup request.</p> <p>Bulk Garbage Sizes:                      "Small item" = Length + Width + Height is less than 3 meters                      "Large item" = Length + Width + Height is 3 meters or more</p> <p>Attach disposal ticket(s), and place item for pickup at your front door (or 1st floor common area if in a building complex) on the arranged day.</p> <p>If you have any questions, contact the Environmental Conservation Division or Iwama Community Division</p>

Household Garbage Disposal Costs		
Burnable	Dispose of Burnable garbage in designated bags Large Bags = ¥200/10 bags Small Bags = ¥100/10 bags	※Purchase at participating supermarkets, convenience stores, shops, etc.
Non-Burnable	Dispose of Non-burnables in designated green containers. Attach a ticket to the green container. Non-Burnable Disposal Tickets = ¥200/5 tickets	
Bulk Garbage	Bulk Disposal Tickets (Small item) = ¥500/ticket Bulk Disposal Tickets (Large item) = ¥1000/ticket	※Purchase at City Hall or Iwama District Branch
"Kankyou Center" Drop Off	You may bring in garbage to the "Kankyou Center" for drop off. The first 100kg is free, and ¥150 per additional 10kg.	