



25



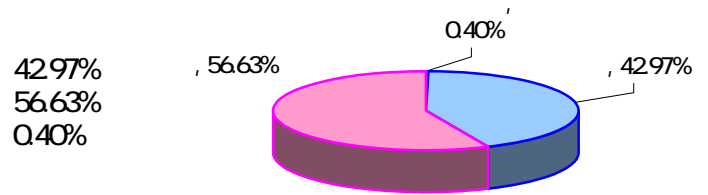
26 3

1. アンケートの概要

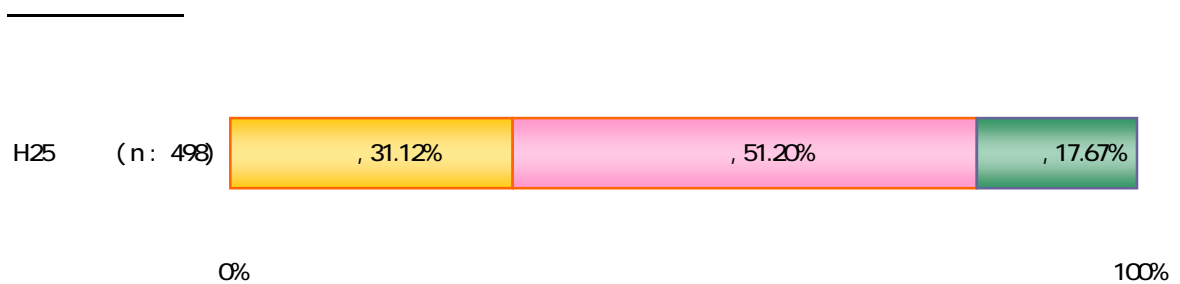
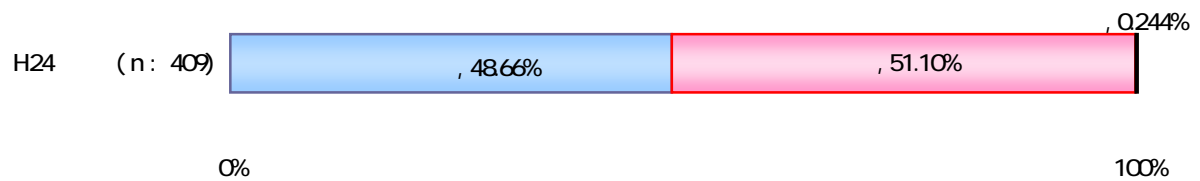
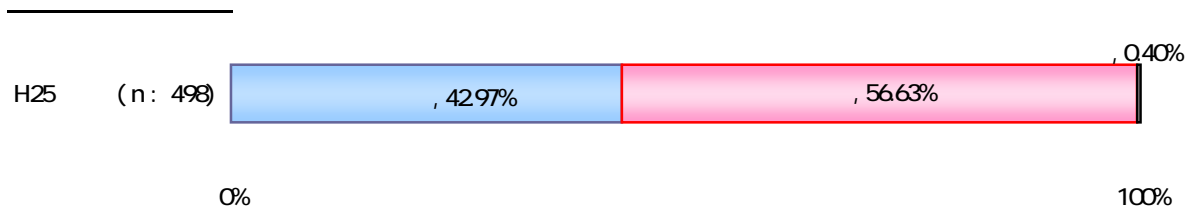
			18		
	1,200				
		26 1 17		26 2 7	
	41.50%	498	1,200		
(%)			42.97	56.63	0.40
(%)			31.12	51.20	17.67

2. アンケート回答者の属性

問1 あなたの性別は？

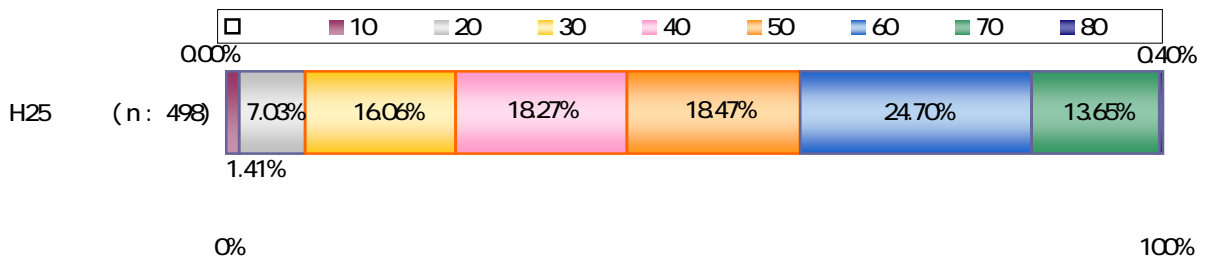
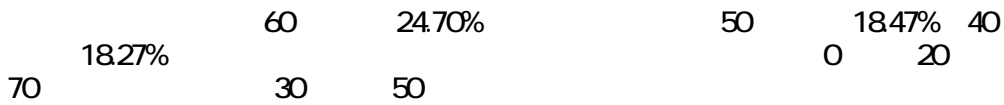
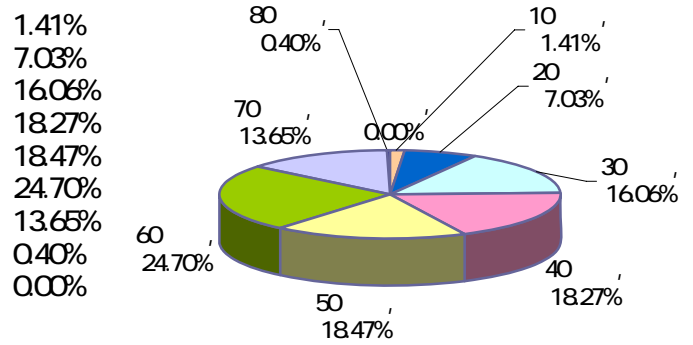


42.97 56.63
49.17 50.83



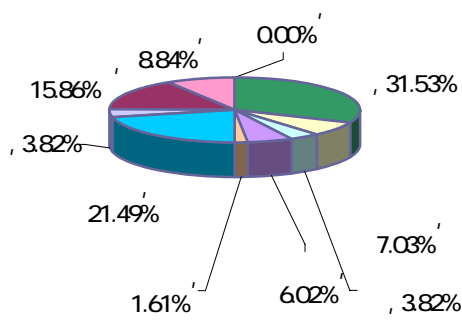
31.12 51.20 17.67
34.58 45.55 19.87

問2 あなたの年齢は？（平成25年1月1日現在の年齢で記入してください。）



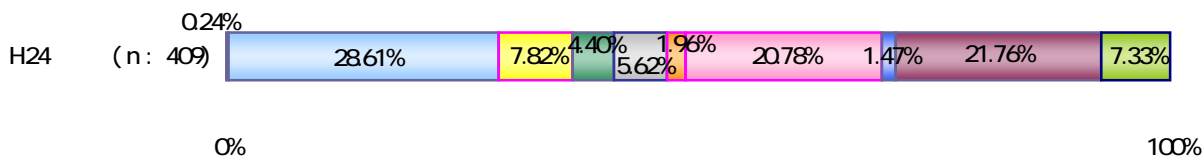
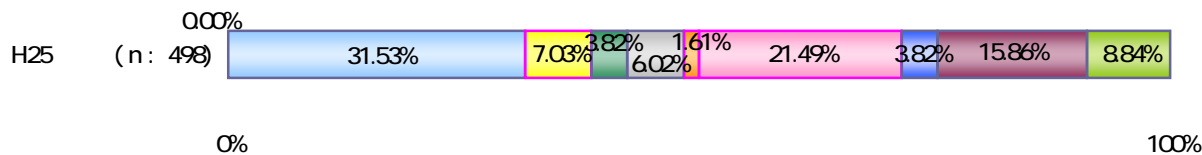
問3 あなたの職業は？（パートタイマーを含む）

31.53%
7.03%
3.82%
6.02%
1.61%
21.49%
3.82%
15.86%
8.84%
0.00%



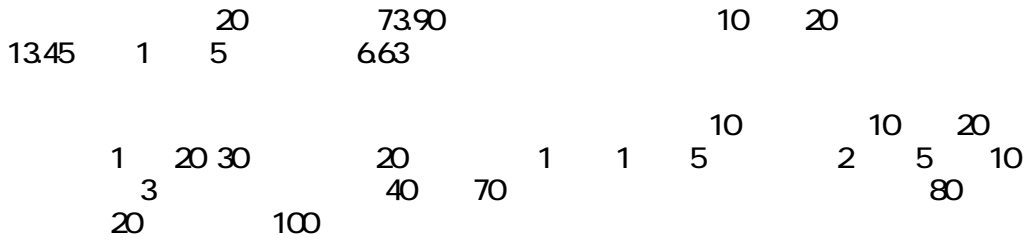
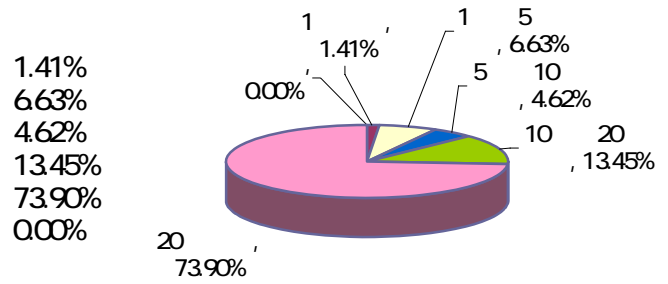
15.86 31.53 21.49

2 20 50 30 40 20



			31.53%		21.49%
			39.25%		24.77%
			37.59%		25.89%
	10		100.00%		
	20		48.57%		31.43%
	30		46.25%		20.00%
	40		46.15%		18.68%
	50		40.22%		16.30%
	60		31.71%		25.20%
	70		48.53%		22.06%
	80		50.00%		50.00%
					15.86%
					8.88%
					10.99%
					11.43%
					8.75%
					11.96%
					18.70%
					14.71%

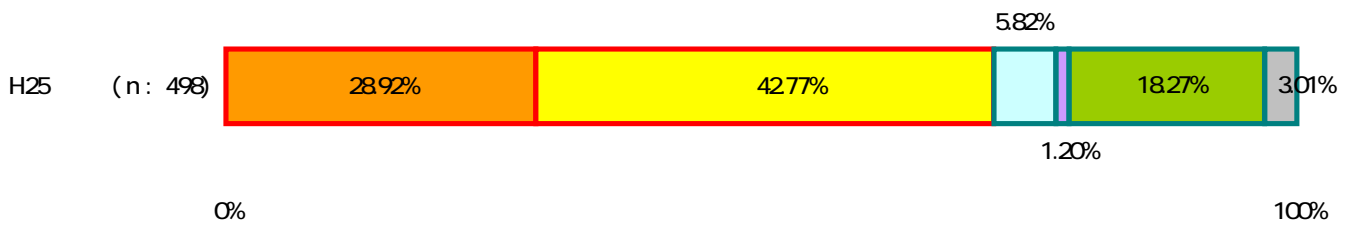
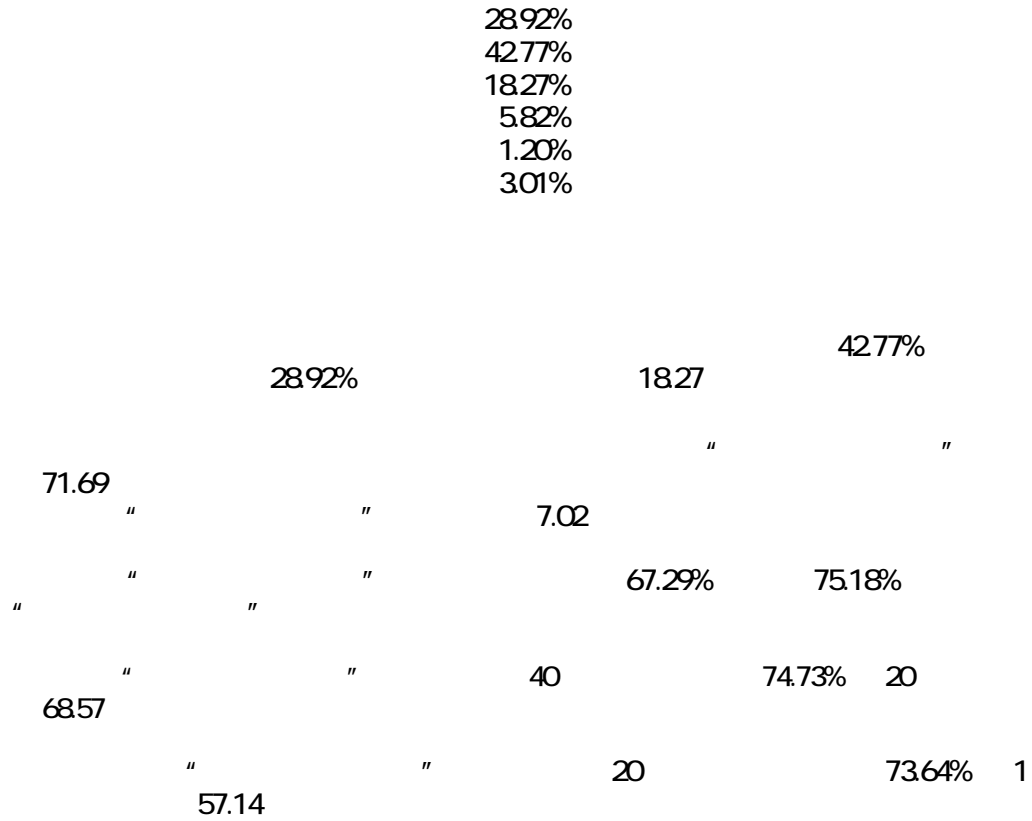
問4 あなたは笠間市にお住まいになってどのくらいになりますか？

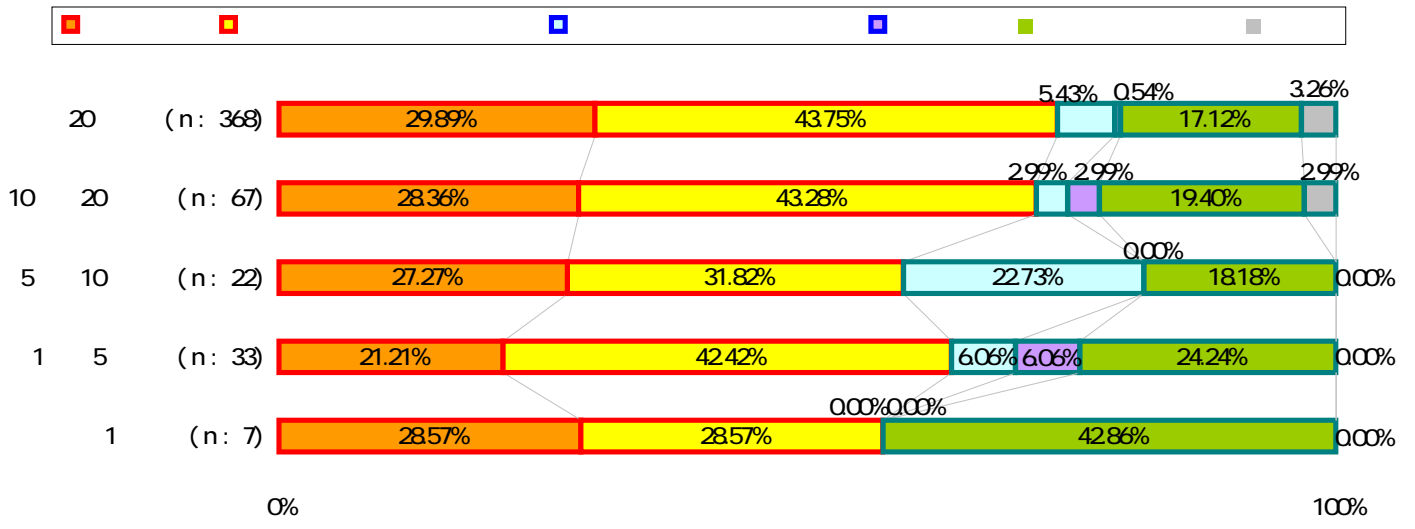
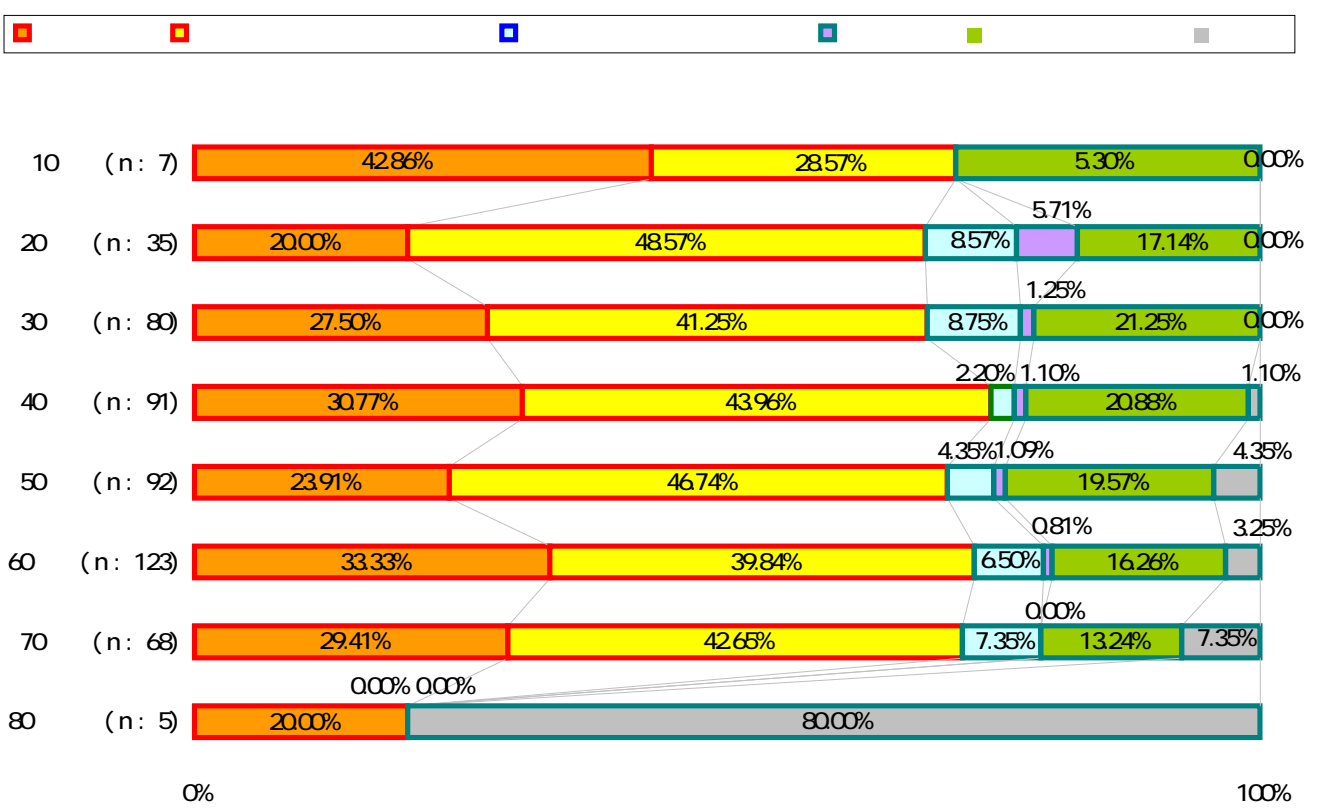
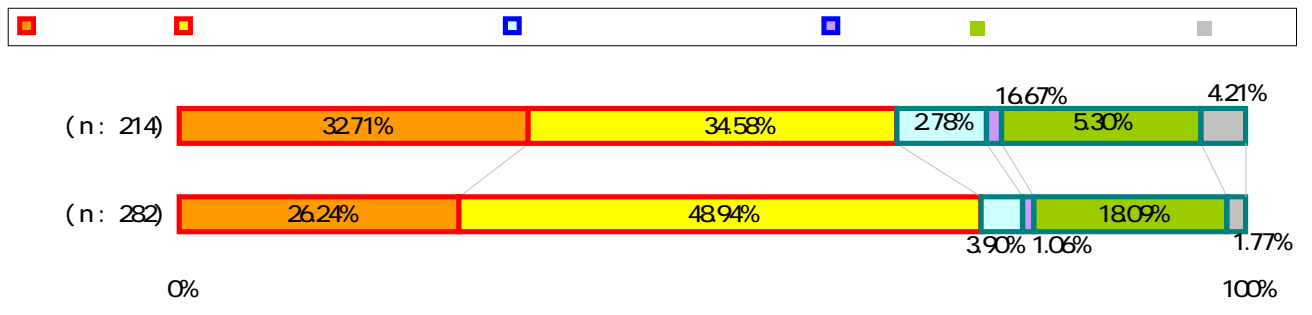


	20	73.90%	10	20	13.45%	1	5	6.63%	
	20	78.04%	10	20	11.21%	1	5	6.54%	
	20	72.36%	10	20	15.64%	1	5	6.91%	
	10	10	20	85.71%	1	14.29%			
	20	20	57.14%	1	5	17.14%	5	10	14.29%
	30	20	62.50%	1	5	16.25%	5	10	10.00%
	40	20	51.65%	10	20	29.67%	1	5	7.69%
	50	20	83.70%	10	20	14.13%	1	5	2.17%
	60	20	88.62%	10	20	6.50%	1	5	3.25%
	70	20	92.65%	10	20	4.41%	1	5	1.47%
	80	20	100.00%						

3. 住みごころ

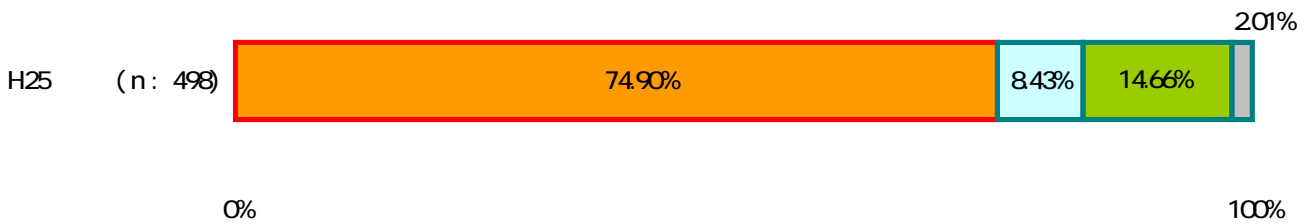
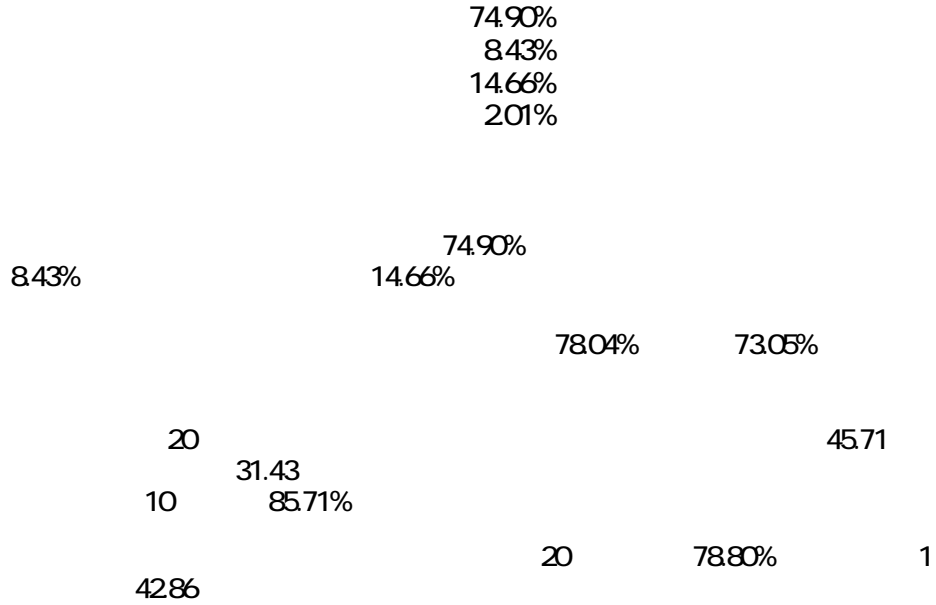
問5 笠間市の住みごころについて、どう感じていますか？（1つ選んでください）

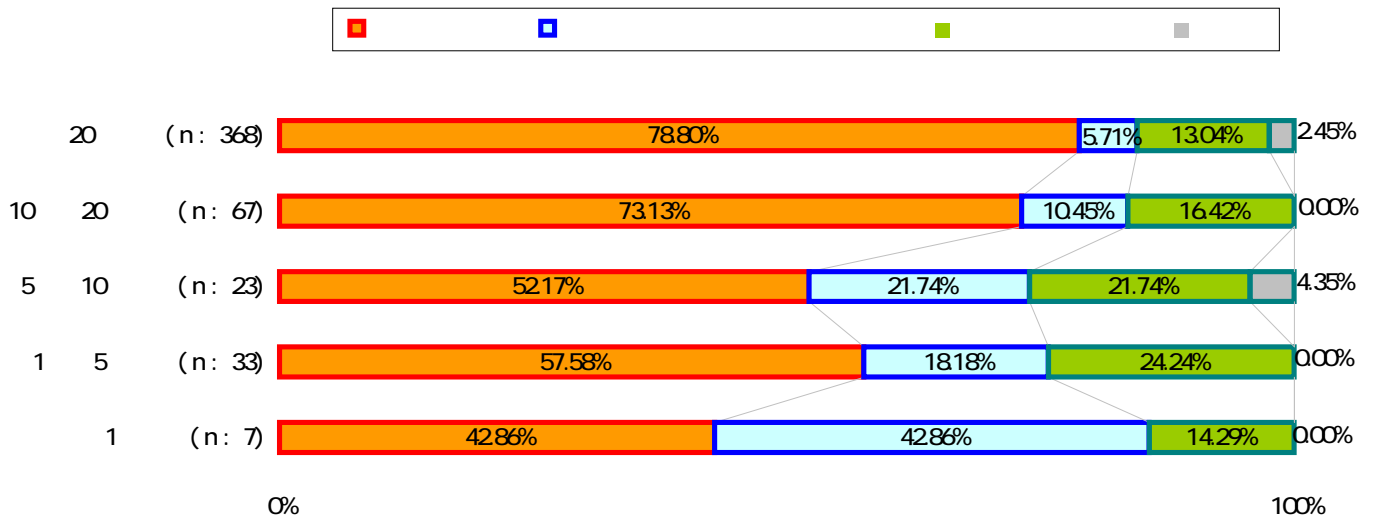
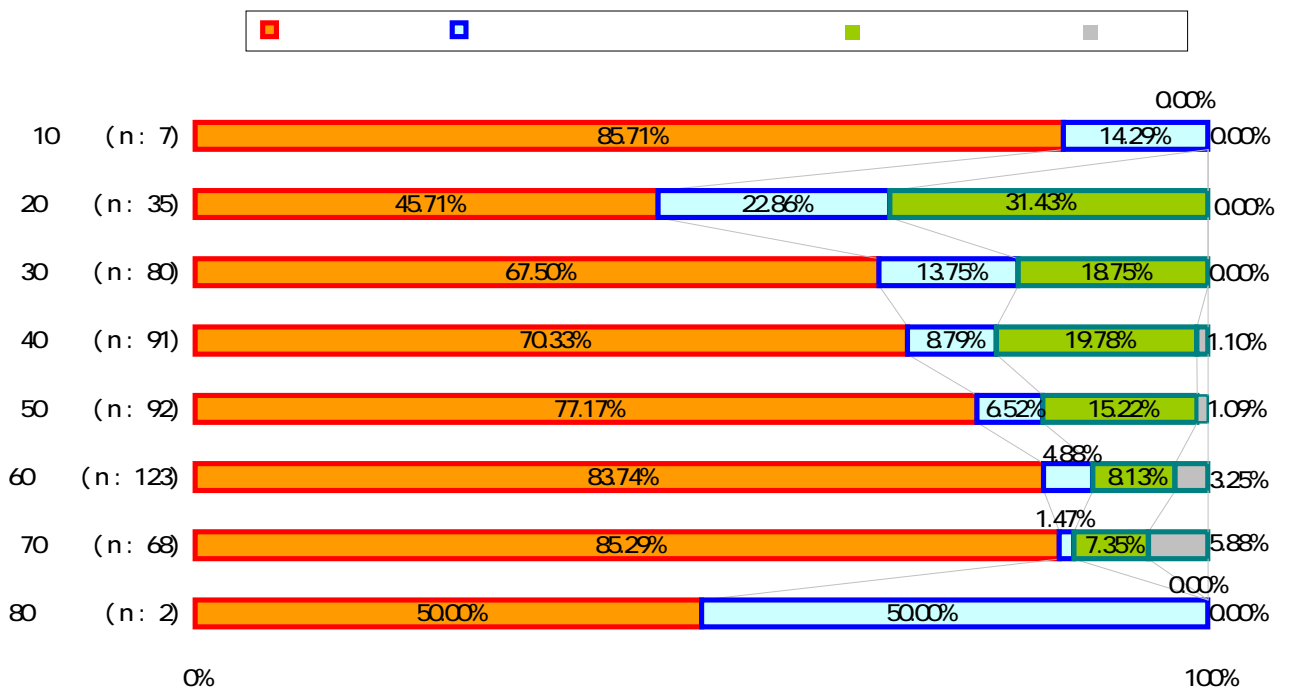
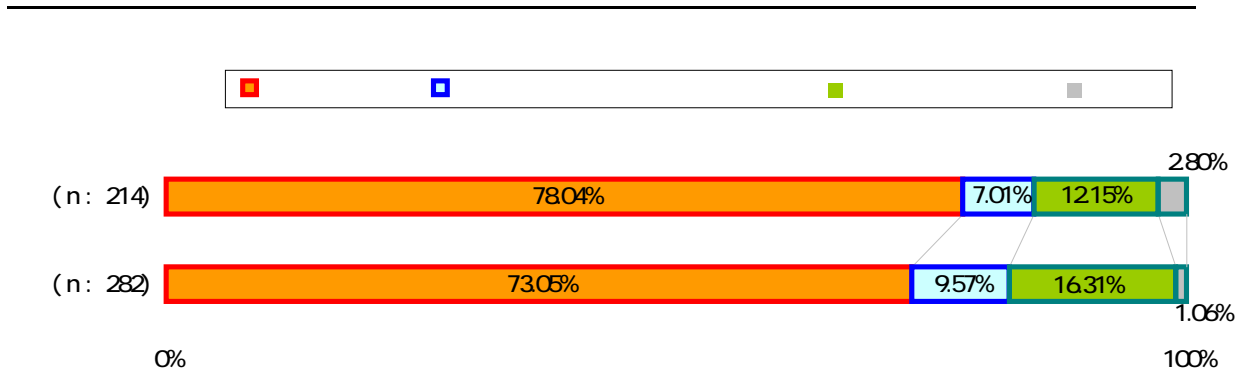




4. 定住意識

問6 これからも笠間市に住み続けたいと思いますか。(1つ選んでください)



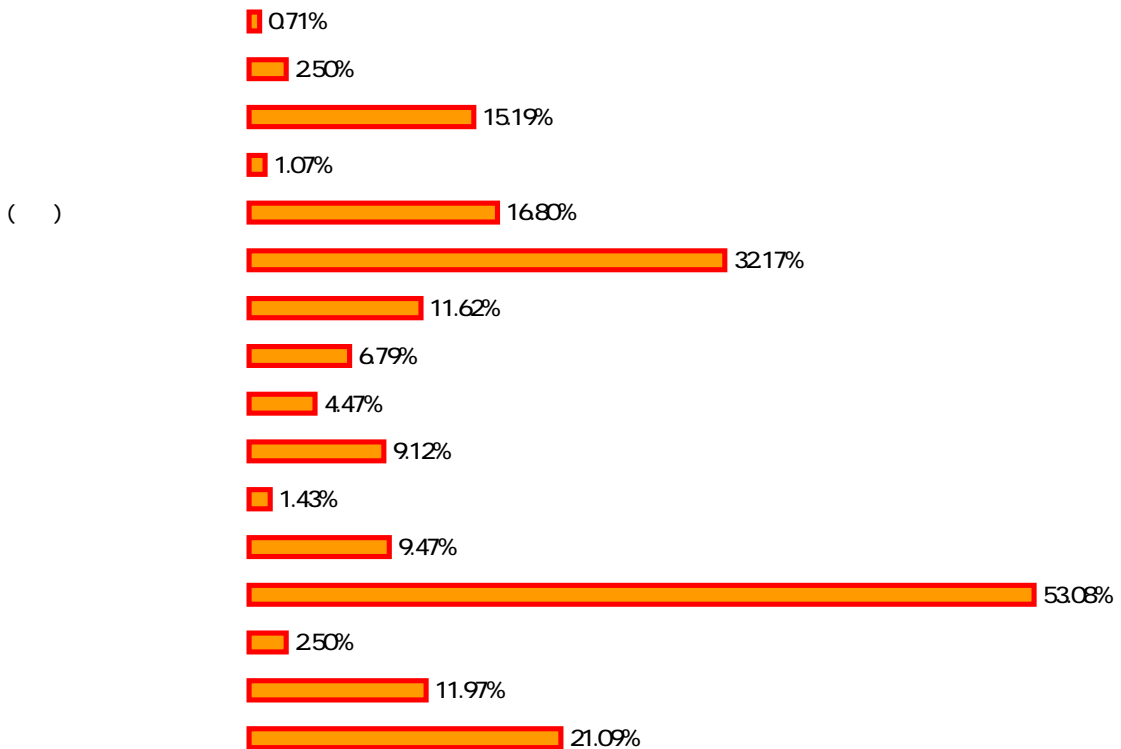
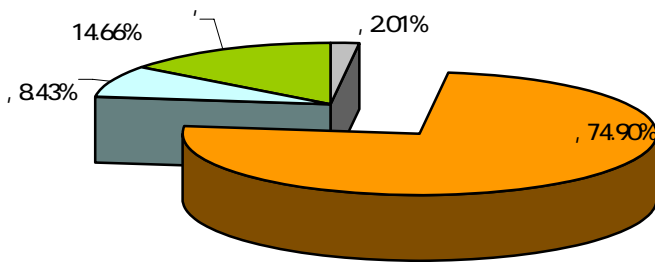


問7 問6で「1.住み続けたい」とお答えの方にお聞きします。
その理由は何ですか？（3つまで選んでください）

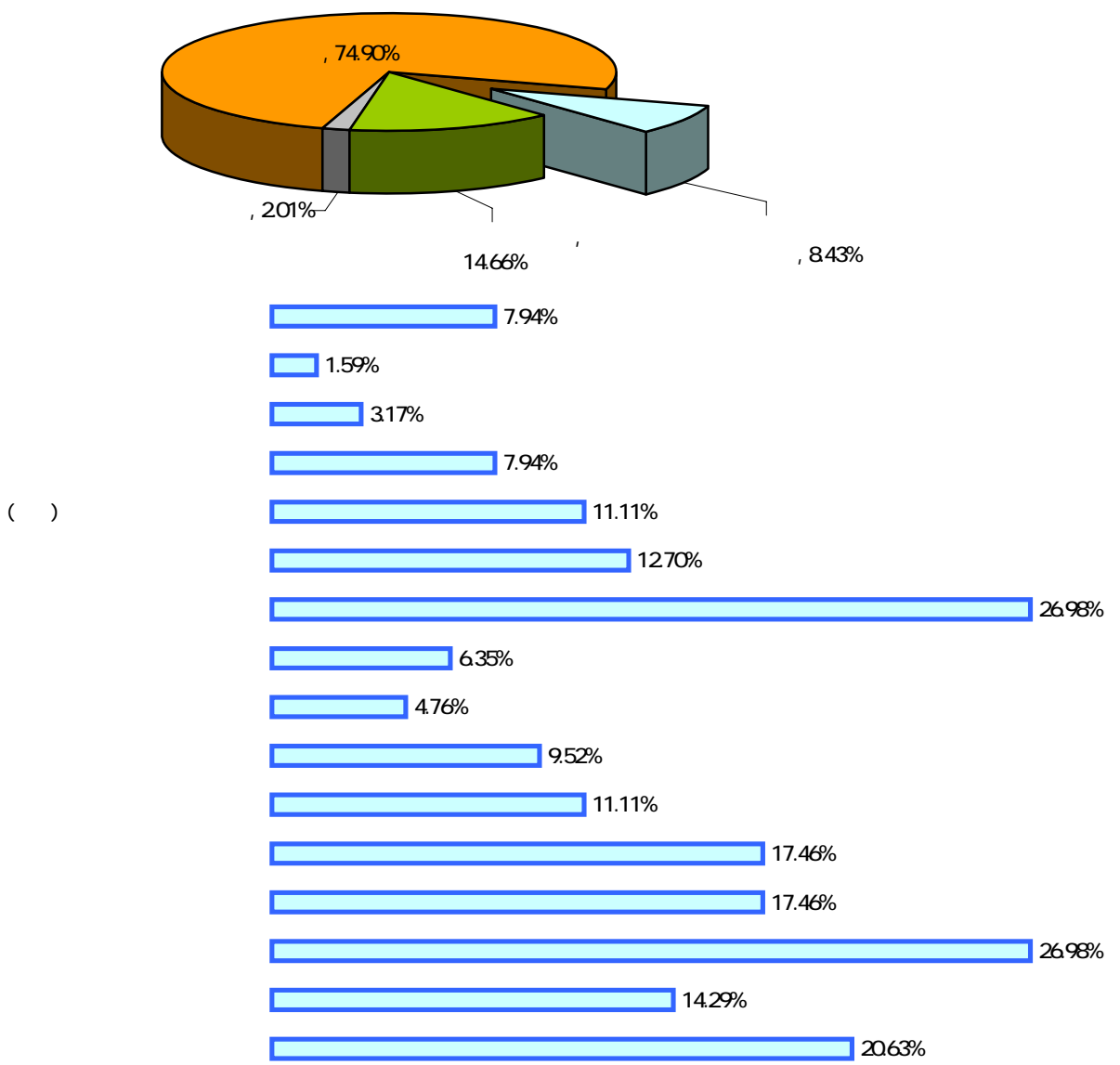
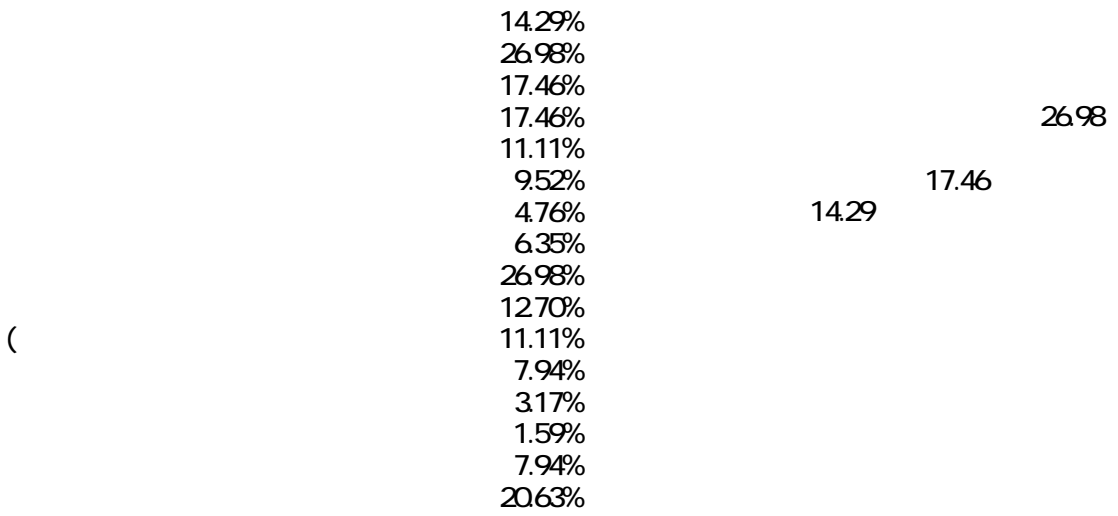
()

11.97%
2.50%
53.08%
9.47%
1.43% ()
9.12%
4.47%
6.79%
11.62%
32.17%
16.80%
1.07%
15.19%
2.50%
0.71%
21.09%

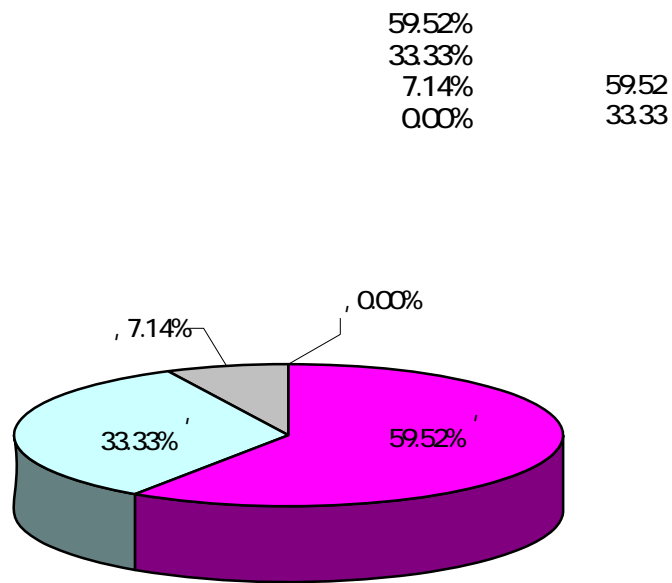
53.08
32.17
16.80



問8 問6で「2. できれば他の市町村に移りたい」とお答えの方にお聞きします。その理由は何ですか？（3つまで選んでください）



問9 問6で「2. できれば他の市区町村に移りたい」とお答えの方にお聞きします。
どこの都市に移りたいですか？



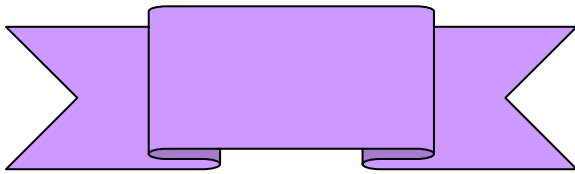
5. まちづくりに対する市民実感

10		16
11		17
12		18
13		19
14		20
15		21
16		22
17		23
18		24
19		25
20		26
21		27
22		28
23		29
24		30
25		31
26		32
27		33
28		34
29		35
30		36
31		37
32		38
33		39
34		40
35		41
36		42
37		43
38		44
39		45
40		46
41		47
42		48
43		49
44		50
45		51
46		52
47		53
48		54
49		55
50		56
51		57
52		58
53		59
54		60
55		61
56		62
57		63
58		64
59		65
60		66
61		67
62		68

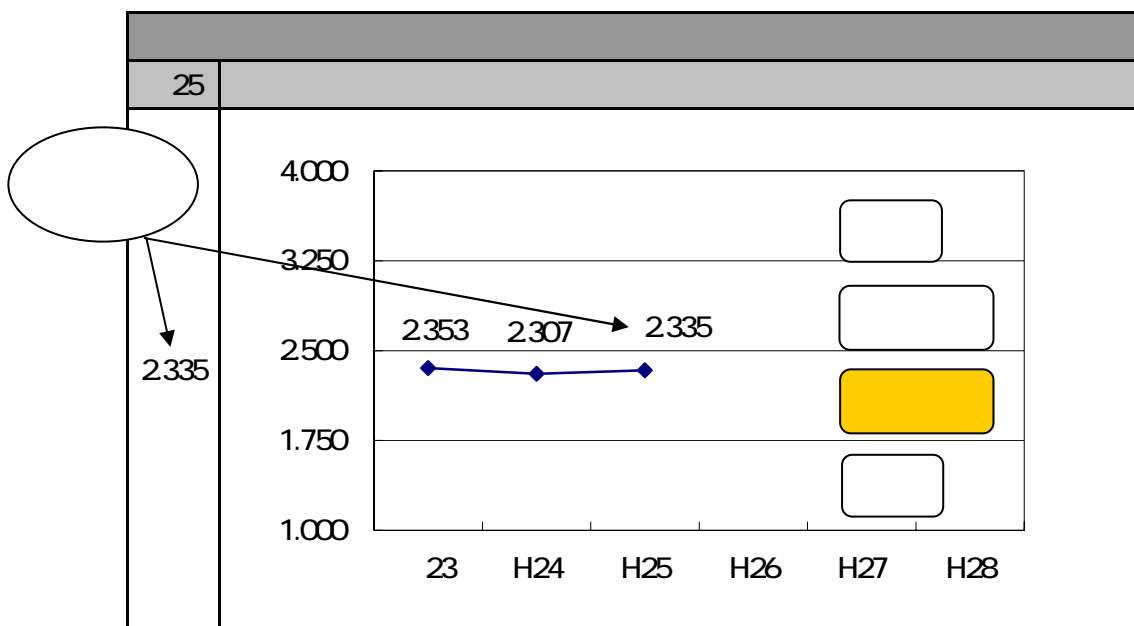
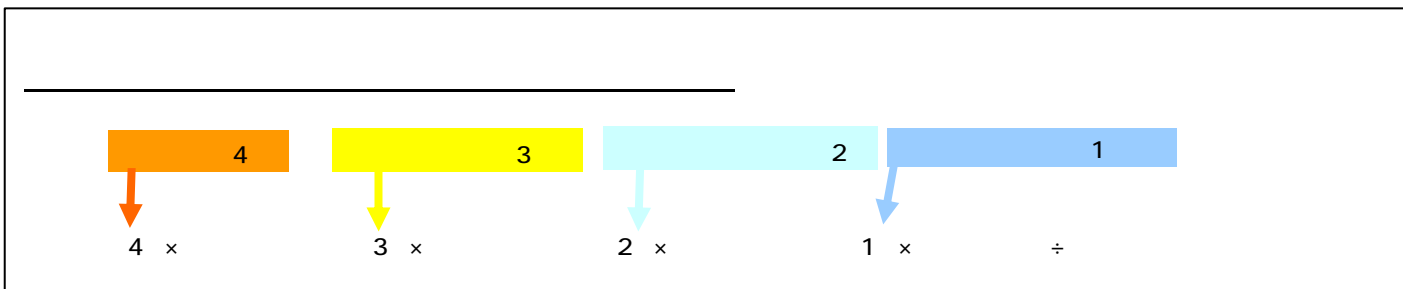
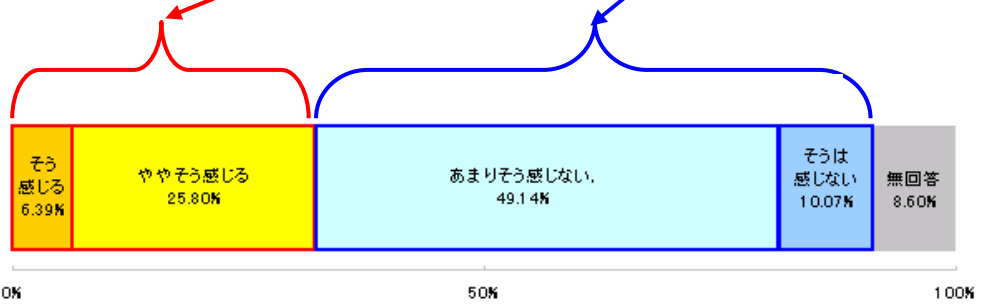
	34.34%	2335
	45.58%	2480
	64.46%	2760
	45.38%	2403
	53.41%	2574
	36.55%	2331
	61.65%	2682
	49.80%	2506
	28.31%	2197
	29.38%	2195
	23.49%	1.986
	16.87%	1.938
	17.67%	1.981
	42.97%	2377
	65.66%	2772
	63.45%	2767
	43.78%	2452
	53.61%	2573
	42.97%	2389
	43.57%	2365
	35.94%	2243
	30.32%	2190
	48.80%	2495
	71.69%	2991
	42.57%	2407
	71.08%	2933
	45.78%	2462
	40.16%	2365
	72.29%	2894
	52.01%	2555
	54.22%	2565
	78.92%	3.231
	75.10%	3010
	86.75%	3447
	20.48%	1.759
	50.00%	2527
	39.16%	2333
	64.06%	2796
	30.72%	1.946
	31.12%	2230
	35.34%	2243
	11.04%	1.502
	39.76%	2365
	34.54%	2251
	25.70%	2154
	32.93%	2141
	54.62%	2545
	37.95%	2313
	27.71%	2128
	44.38%	2411
	29.52%	2204
	52.63%	2602
	75.00%	3050

" " " "
 " " " "
 59.74%()+31.46%()
 91.20%

1.000 4.000
 43
 4x 806 +3x 359 +2x 83 +1x 21
 3.537



1	6.39%	26	32.19%
2	25.80%	105	
3	49.14%	200	59.21%
4	10.07%	41	
0	8.60%	35	





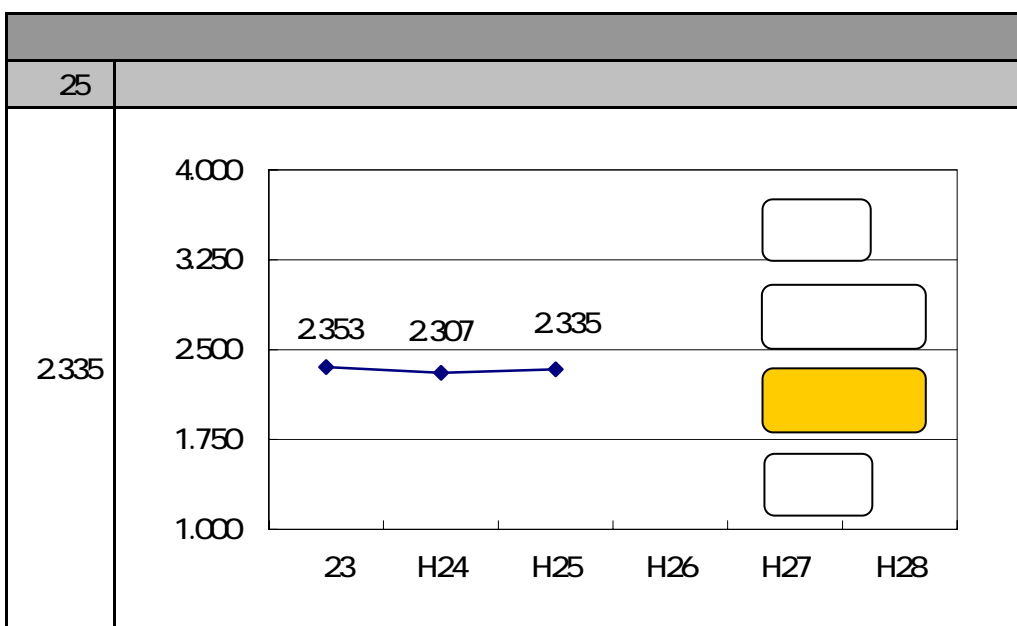
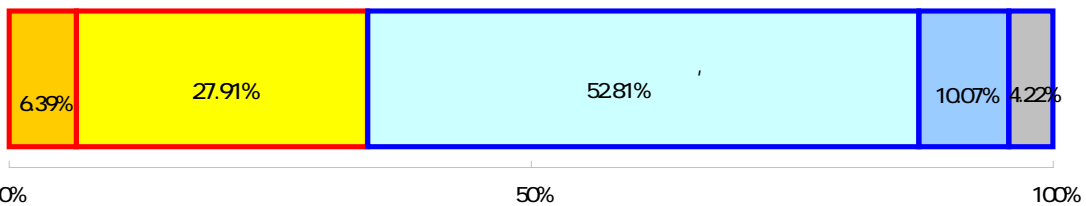
問10 笠間市の特性を生かした土地利用がされていると思いますか。

52.81% 263 27.91% 139

" " 34.34% " " 61.45%

2335

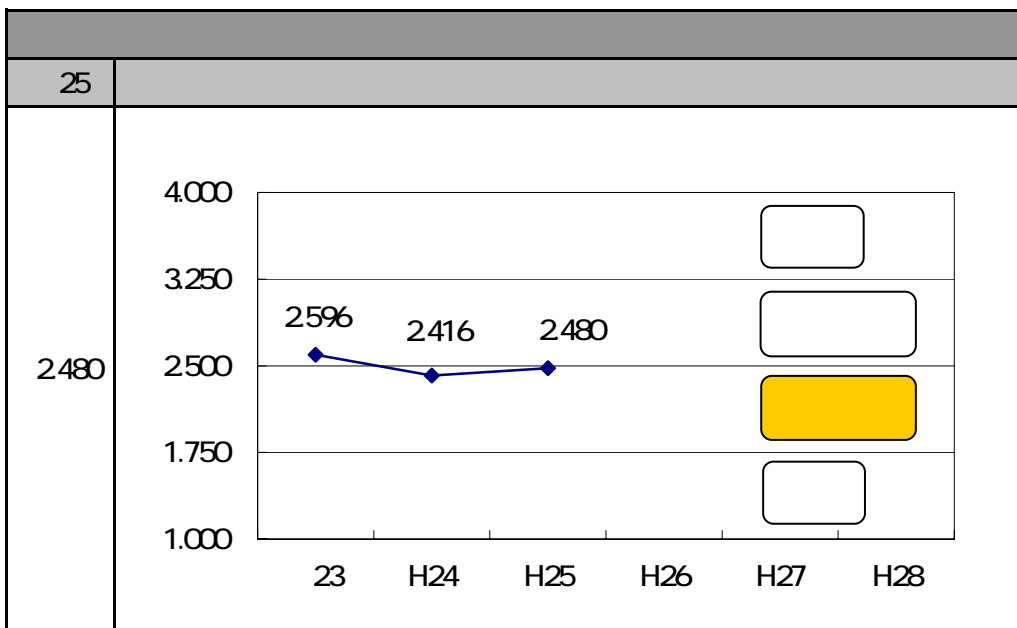
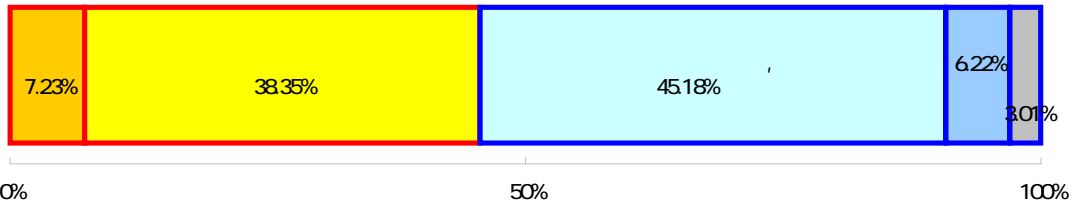
1		6.43%	32
2		27.91%	139
3		52.81%	263
4		8.63%	43
0		4.22%	21



問1 1 笠間市内外の交流が活性化されてきていると思いますか。

[45.18% 225 38.35% 191
 " 45.58% " 51.41%
 2480

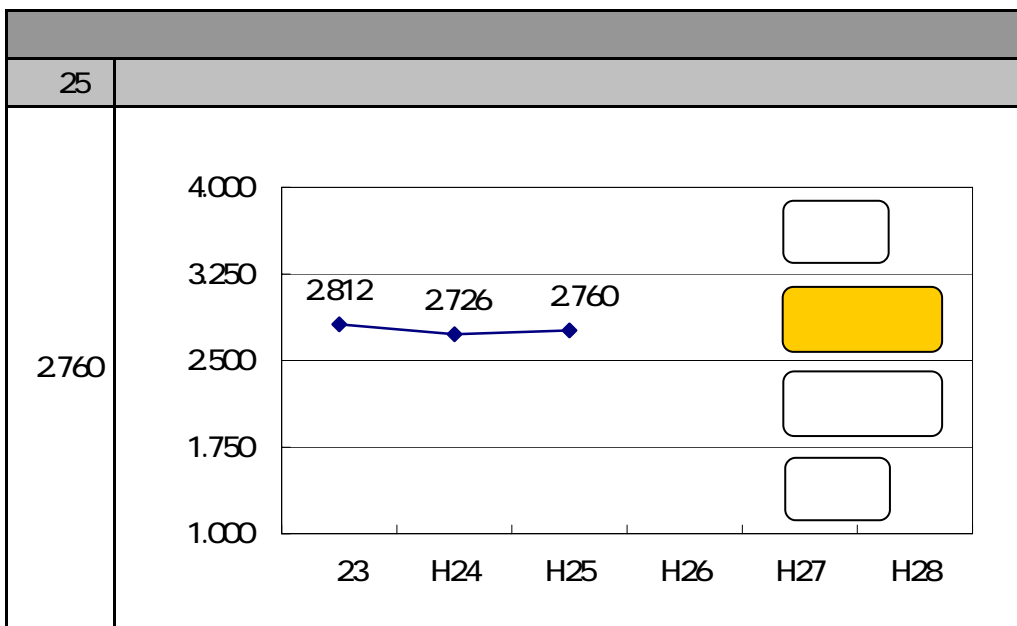
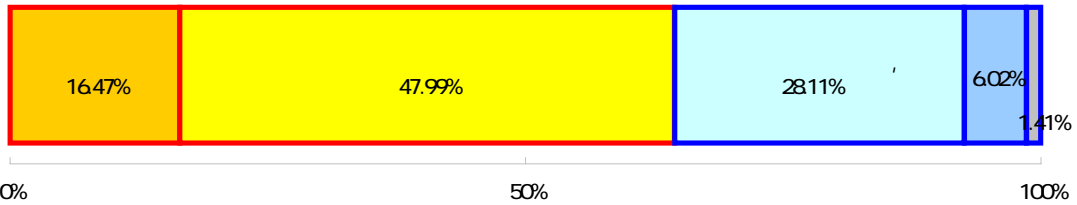
1		7.23%	36	
2		38.35%	191	45.58%
3		45.18%	225	51.41%
4		6.22%	31	
0		3.01%	15	



問12 市街地間の移動がしやすくなったと思いますか。

47.99% 239
 " " 64.46
 " " 34.14%
 2760

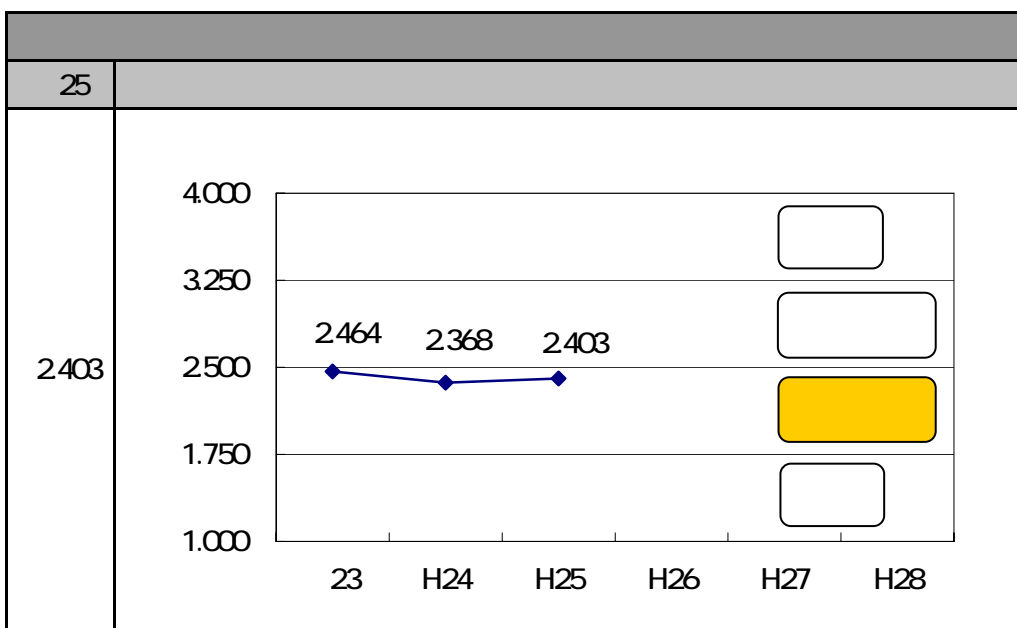
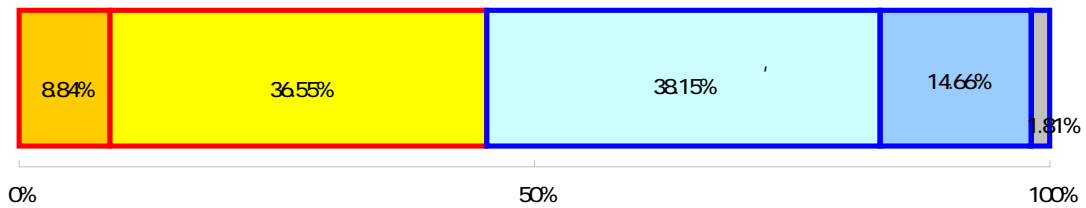
1	16.47%	82	
2	47.99%	239	64.46%
3	28.11%	140	34.14%
4	6.02%	30	
0	1.41%	7	



問13 笠間市内の公共交通機関は使いやすいと思いますか。

38.15% 190
 " " 45.38
 " " 52.81%
 2403

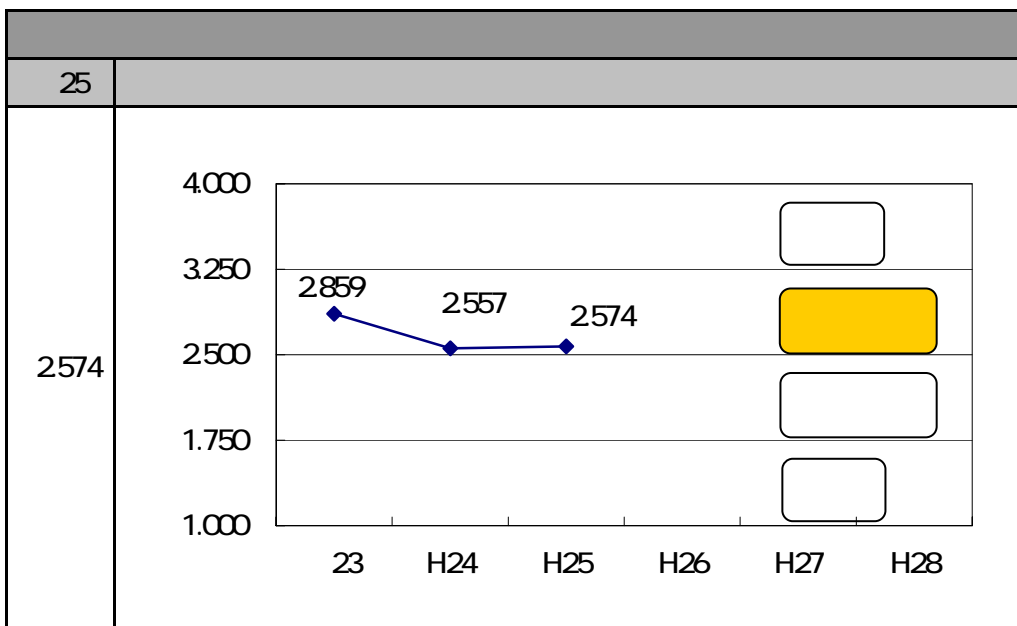
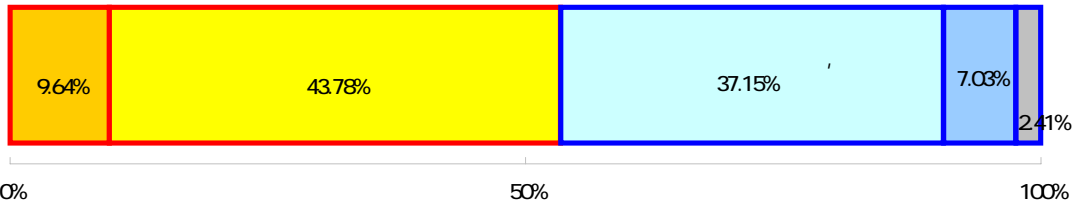
1	8.84%	44	
2	36.55%	182	45.38%
3	38.15%	190	52.81%
4	14.66%	73	
0	1.81%	9	



問14 自然景観が良好に保たれていると思いますか。

43.78% 218
 " " 53.41% " " 37.15% 185
 " " 44.18%
 2574

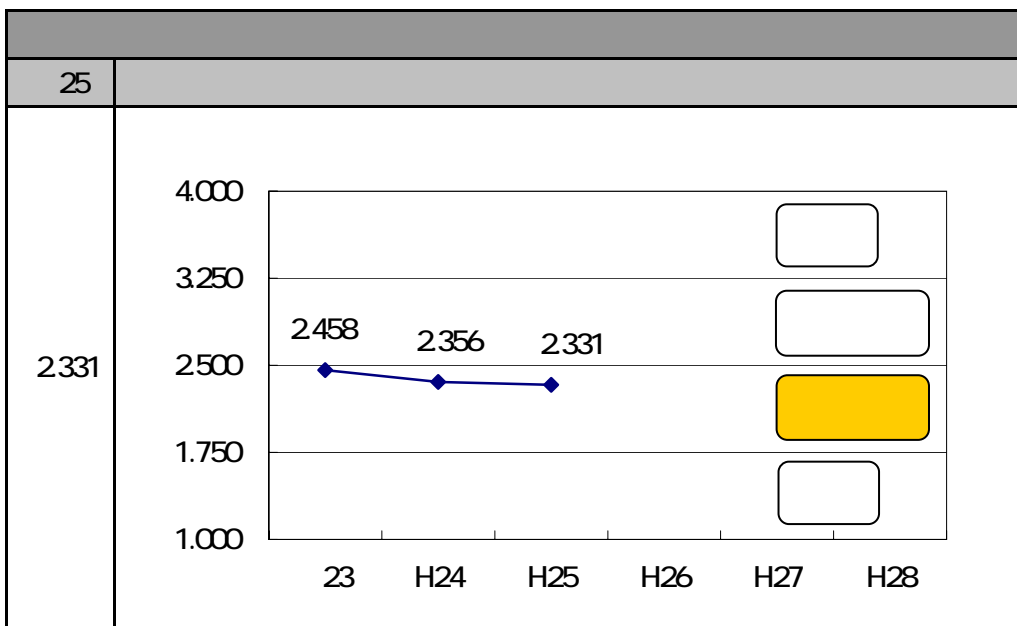
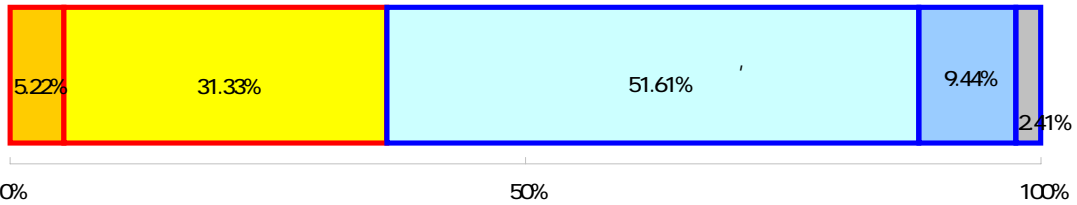
1		9.64%	48
2		43.78%	218
3		37.15%	185
4		7.03%	35
0		2.41%	12



問15 市内において良好な市街地が形成されてきていると思いますか。

51.61% 257
 " " 36.55
 " " 61.04%
 2,331

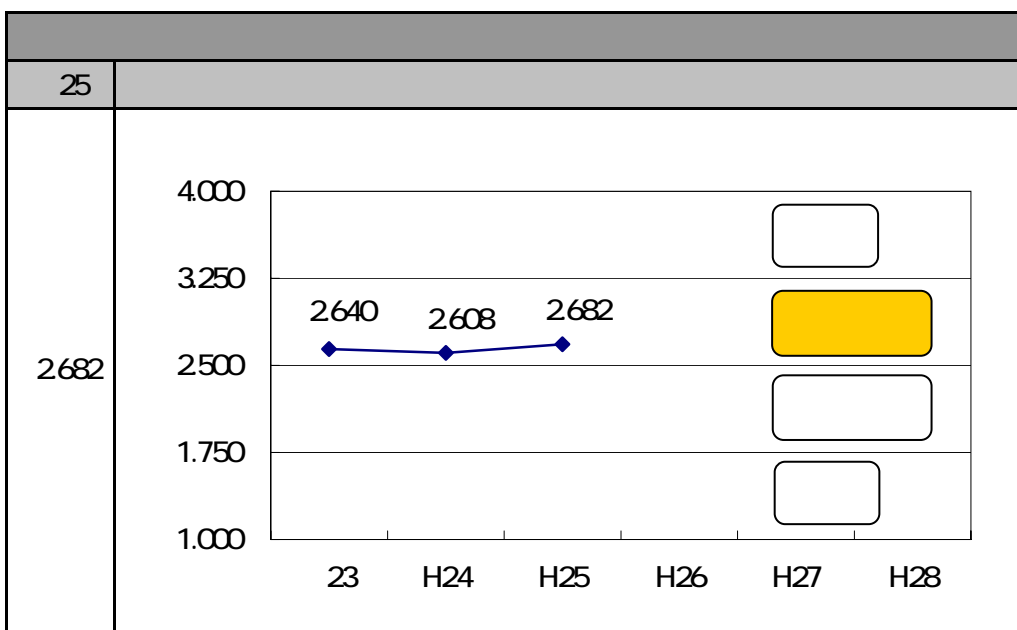
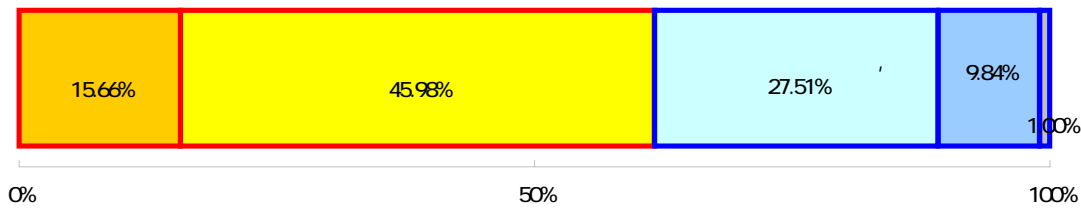
1		5.22%	26
2		31.33%	156
3		51.61%	257
4		9.44%	47
0		2.41%	12



問16 笠間市の観光都市としての魅力が向上していると思いますか。

45.98% 229
 " " 61.65 " " 37.35%
 2682

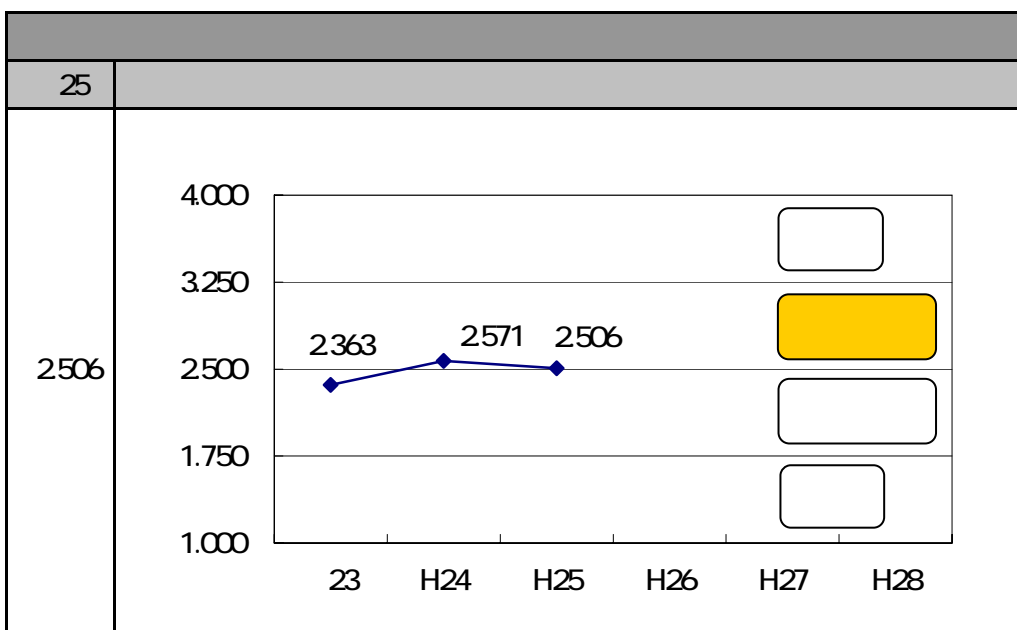
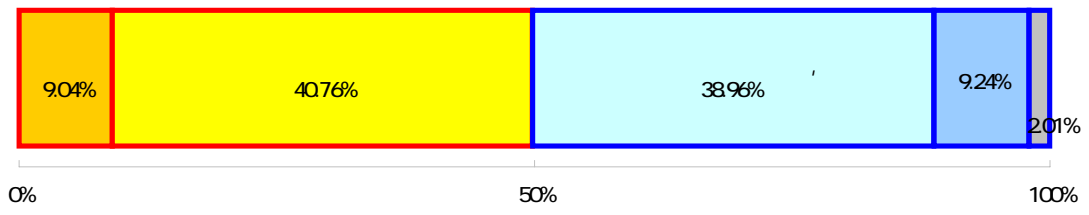
1	15.66%	78	
2	45.98%	229	61.65%
3	27.51%	137	37.35%
4	9.84%	49	
0	1.00%	5	



問17 地場産業生産品の市内外での流通が増えてきていると感じますか。

40.76% 203
 " " 49.80
 " " 48.19%
 2506

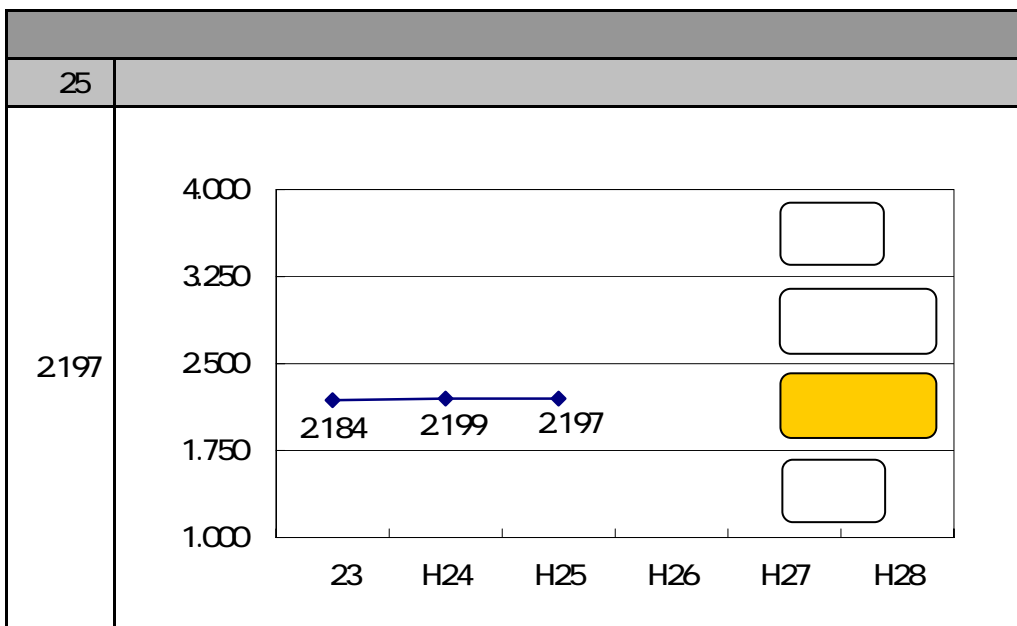
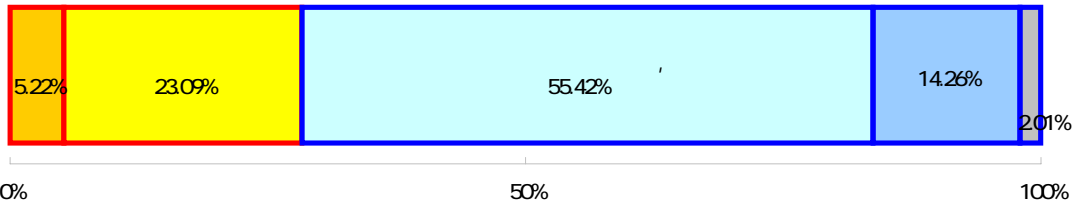
1		9.04%	45	
2		40.76%	203	49.80%
3		38.96%	194	
4		9.24%	46	48.19%
0		2.01%	10	



問18 自然と共生した活力ある農林業の振興が行われていると感じますか。

55.42% 276
 " 28.31
 " 69.68%
 2197

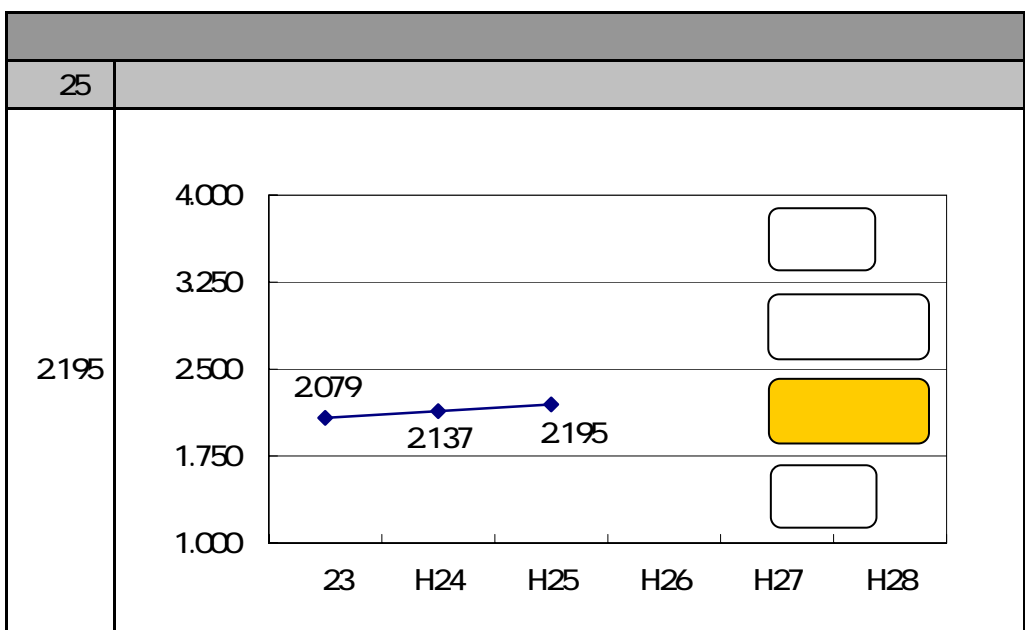
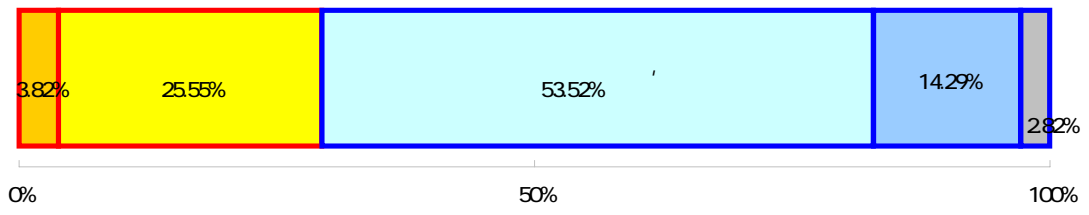
1		5.22%	26
2		23.09%	115
3		55.42%	276
4		14.26%	71
0		2.01%	10



問19 都市と農村との交流により農業・農村が活性化されていると感じますか。

53.52% 266
 " 29.38
 " 67.81%
 2195

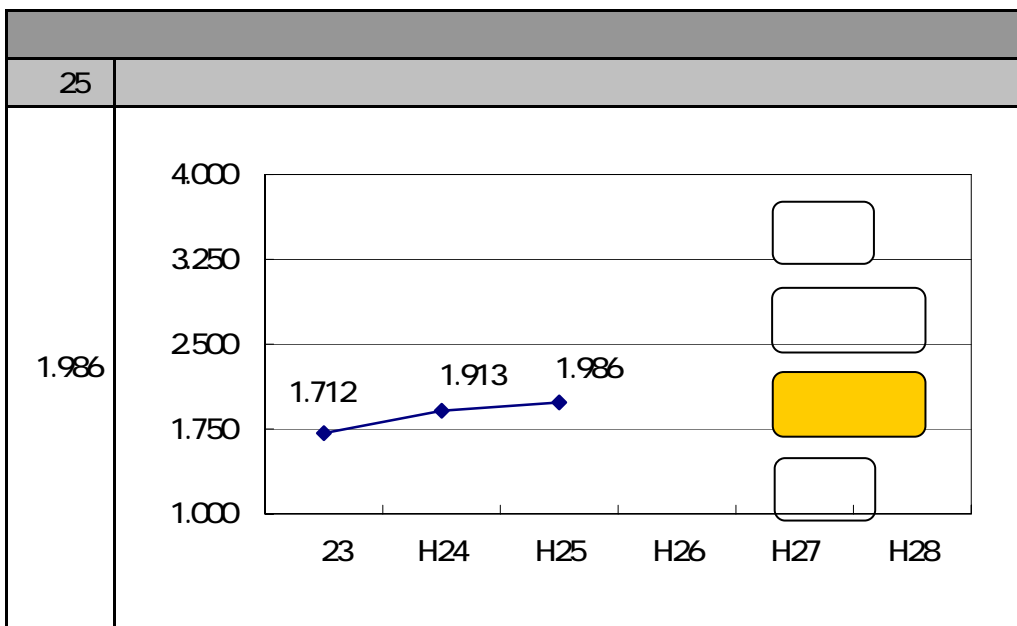
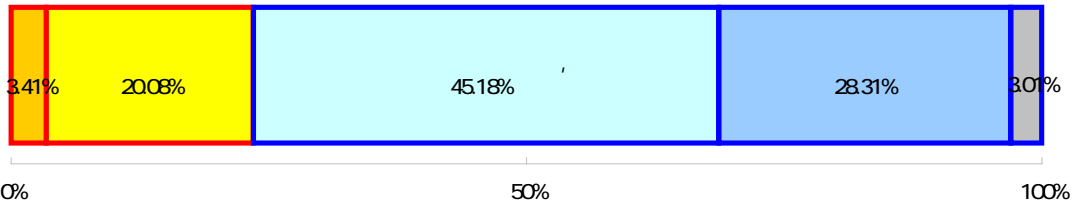
1	3.82%	19	
2	25.55%	127	29.38%
3	53.52%	266	67.81%
4	14.29%	71	
0	2.82%	14	



問20 お近くの商店街には活気があると感じますか。

45.18% 225
 " 23.49
 " 73.49%
 1.986

1	3.41%	17	
2	20.08%	100	23.49%
3	45.18%	225	73.49%
4	28.31%	141	
0	3.01%	15	



問2 1 産業拠点の形成（企業誘致等）により地元雇用が増えていると思いますか。

54.22% 270

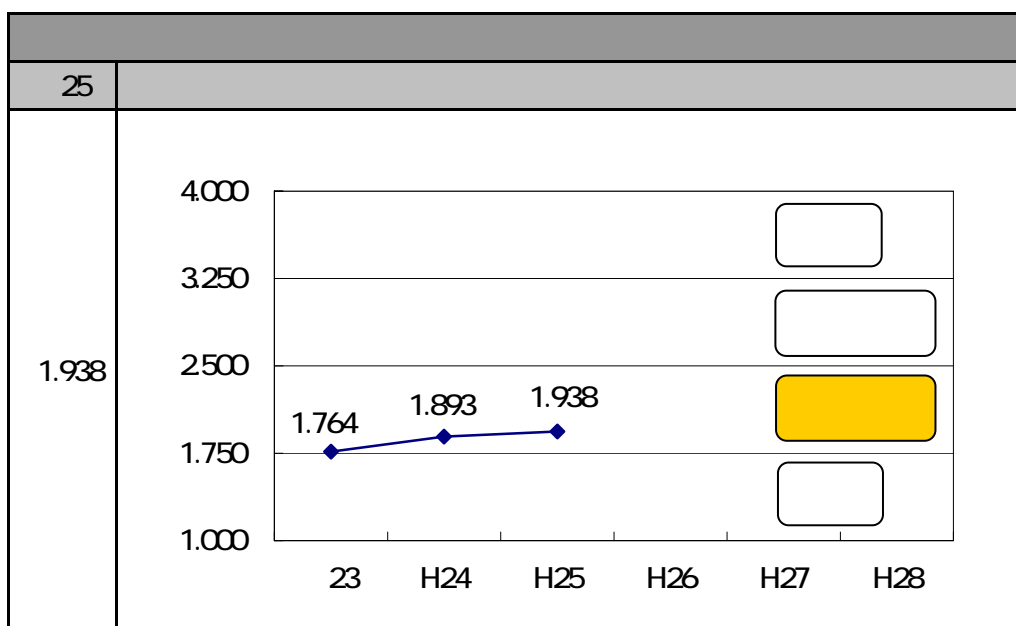
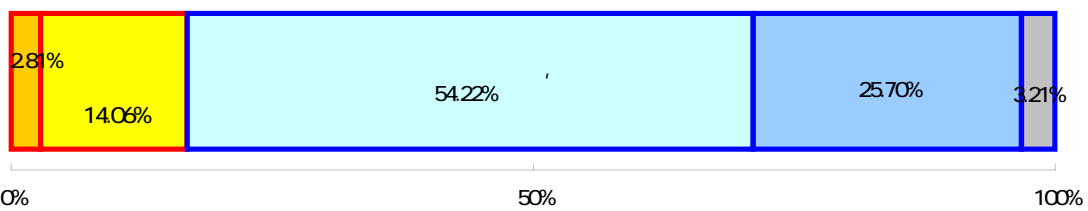
25.70% 128

" " 16.87%

" " 79.92%

1.938

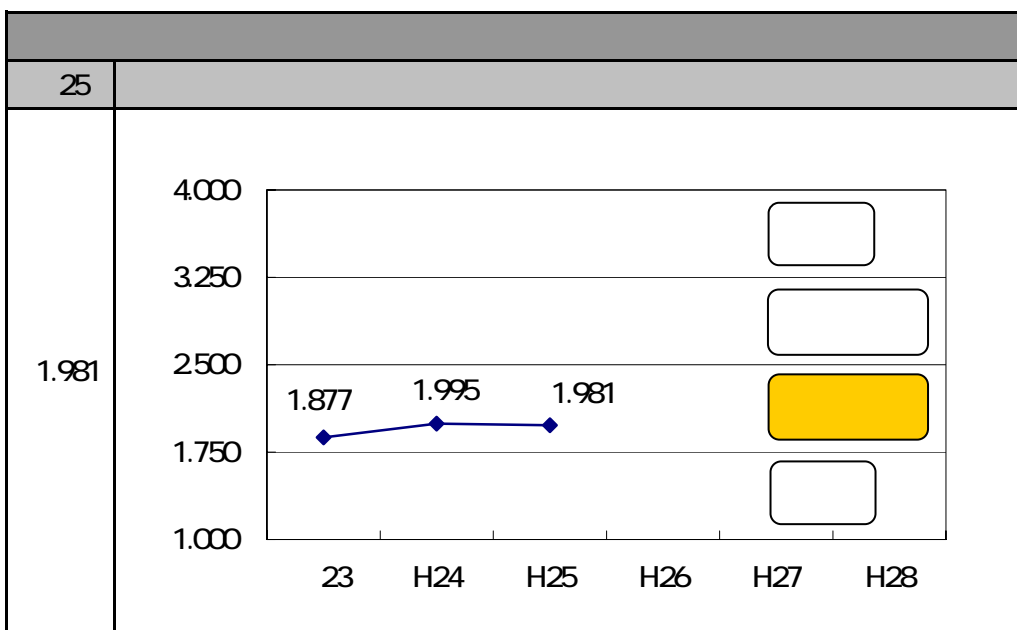
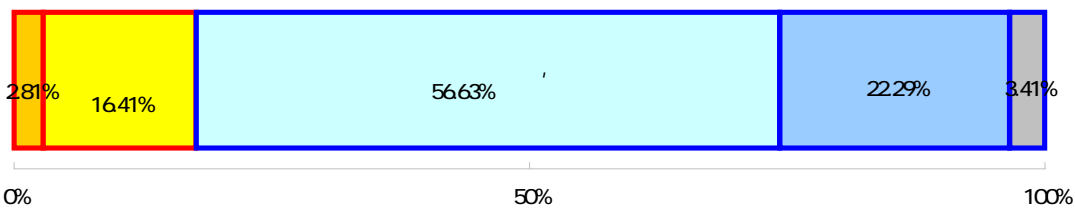
1		2.81%	14
2		14.06%	70
3		54.22%	270
4		25.70%	128
0		3.21%	16



問22 安心して働くことのできる職場があると感じますか。

56.63% 282
 " " 17.67% " " 78.92%
 1.981

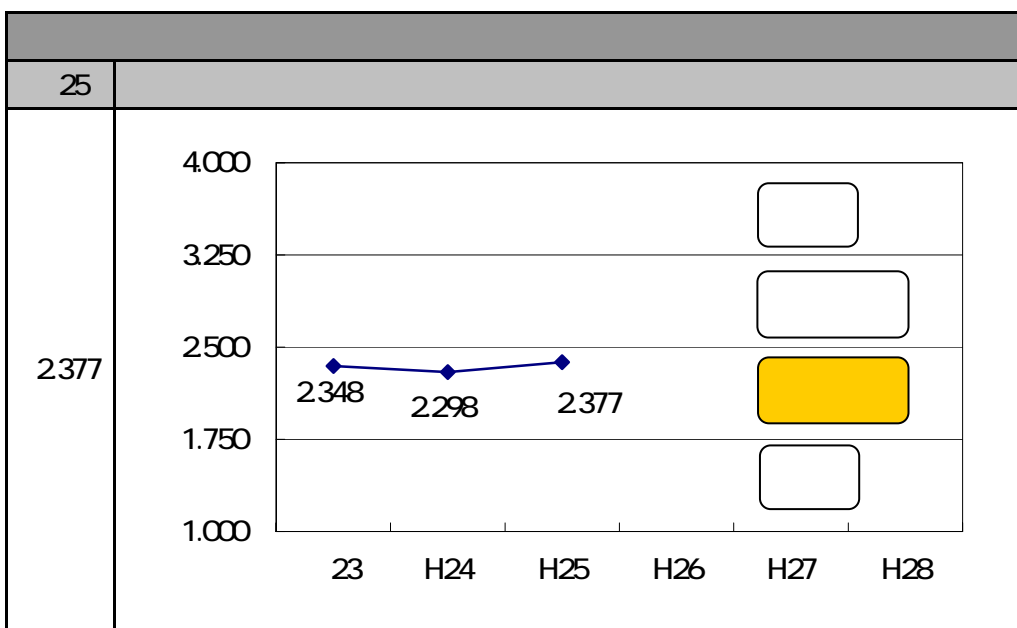
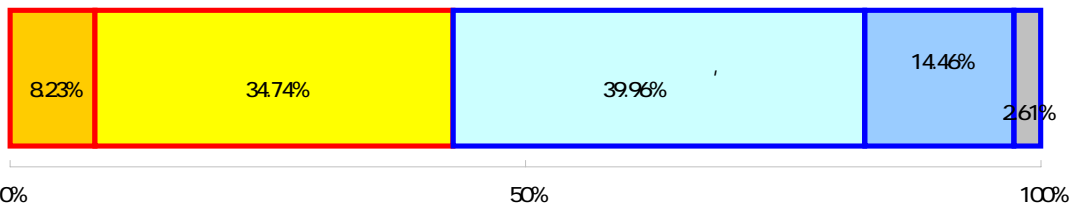
1	2.81%	14	
2	14.86%	74	17.67%
3	56.63%	282	78.92%
4	22.29%	111	
0	3.41%	17	



問23 安心して子どもを育てるサービスや環境が整っていると感じますか。

39.96% 199
 " " 42.97%
 " " 54.42%
 2377

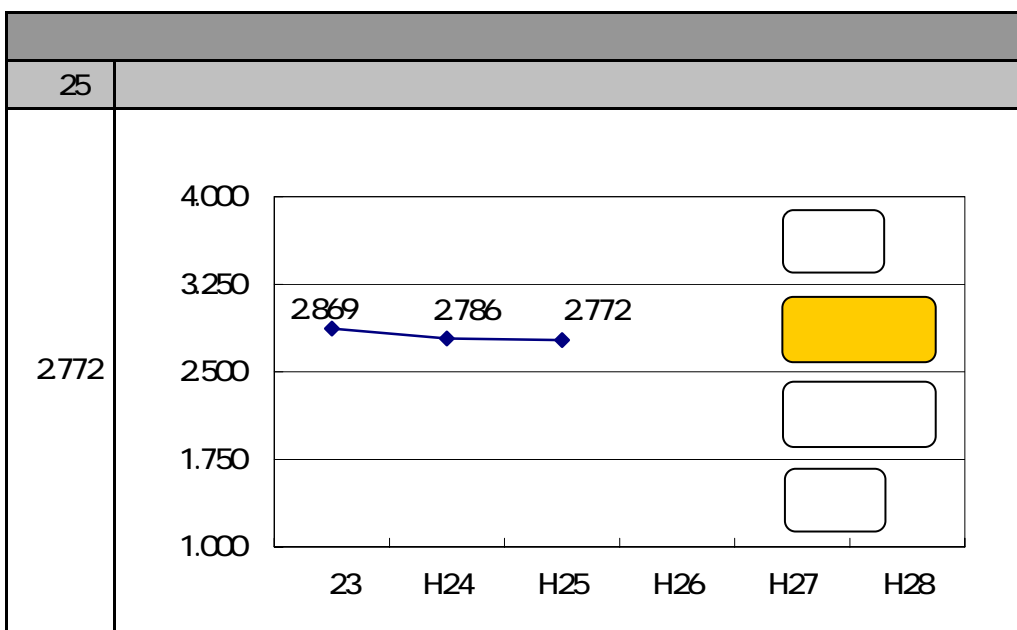
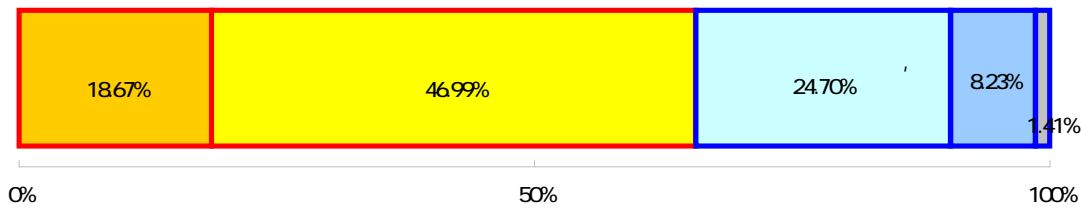
1	8.23%	41	
2	34.74%	173	42.97%
3	39.96%	199	54.42%
4	14.46%	72	
0	2.61%	13	



問24 生活習慣病や心の病など、健康問題が複雑化していますが、あなた自身は健康だと思えますか。

46.99% 234
 " " 65.66
 " " 32.93%
 2772

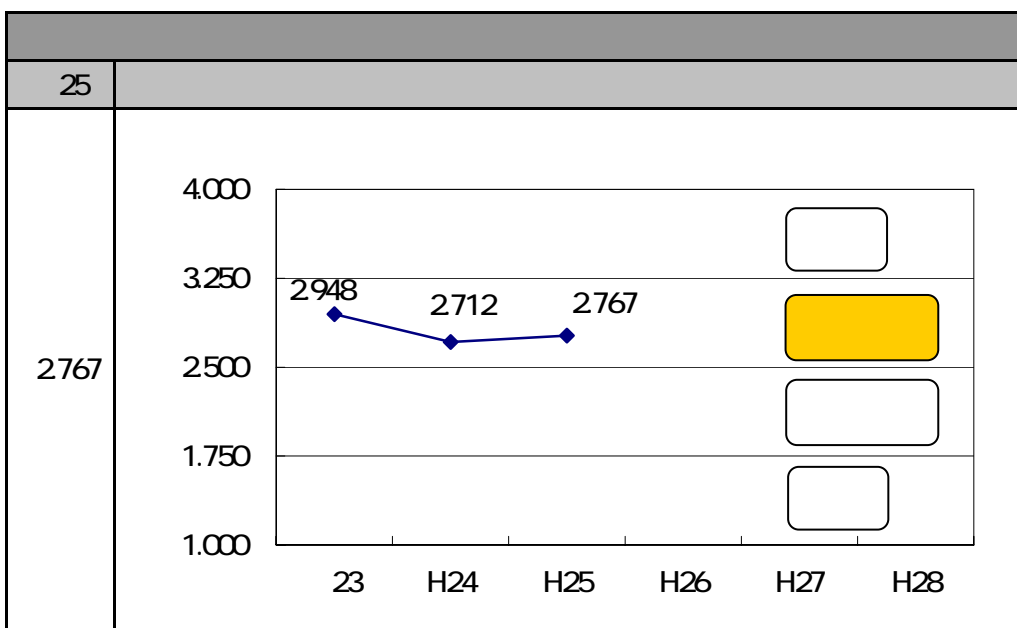
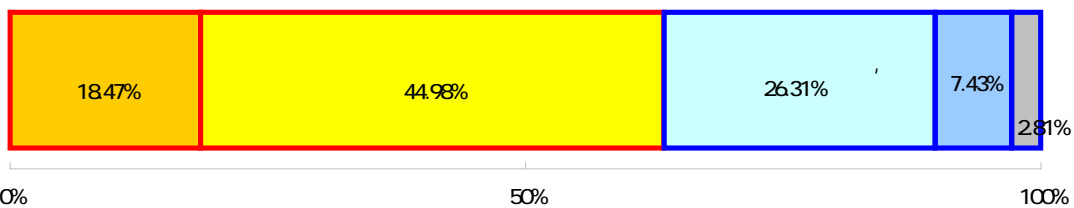
1	18.67%	93	
2	46.99%	234	65.66%
3	24.70%	123	32.93%
4	8.23%	41	
0	1.41%	7	



問25 安心して医療を受けることができますか。

44.98% 224
 " " 63.45
 " " 33.73%
 2767

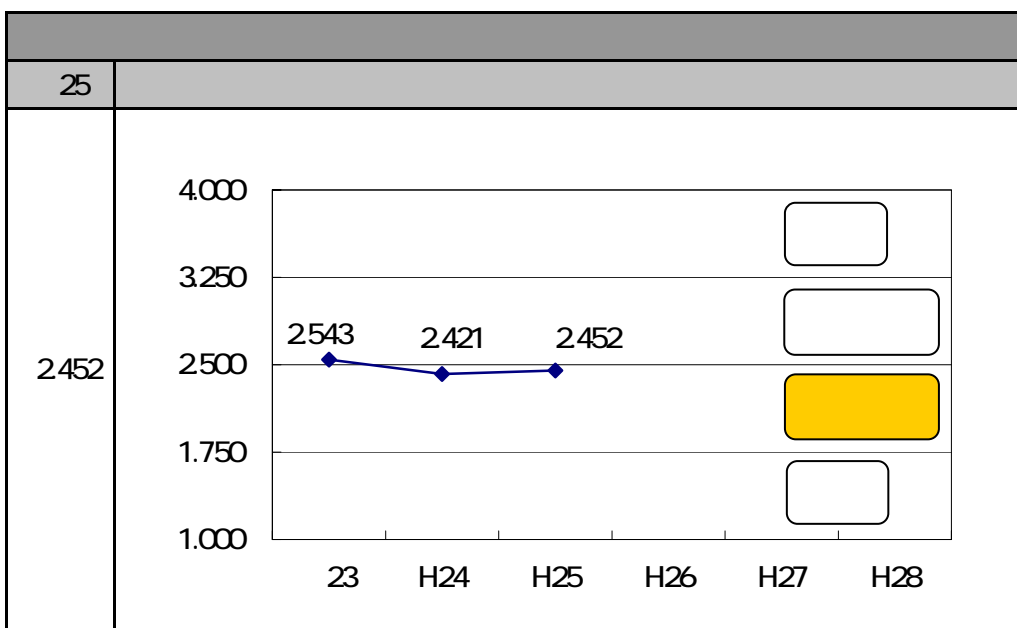
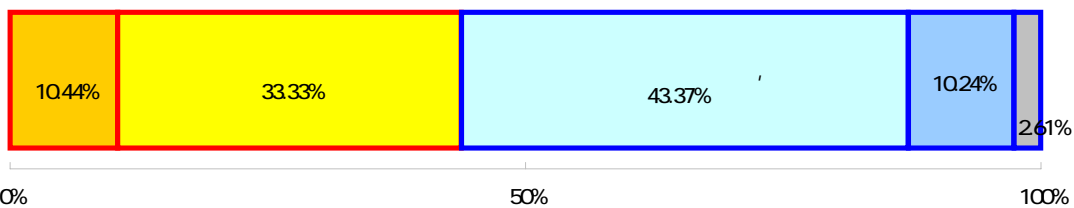
1		18.47%	92
2		44.98%	224
3		26.31%	131
4		7.43%	37
0		2.81%	14



問26 地域福祉（地域での助け合いや支え合い）が充実していると感じますか。

43.37% 216
 " " 43.78
 " " 53.61%
 2452

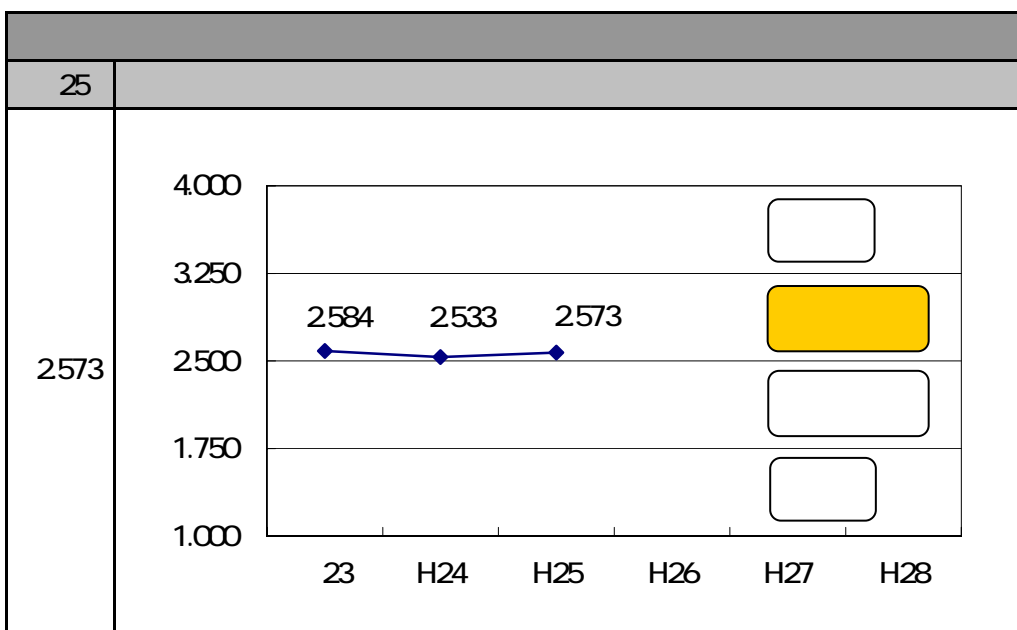
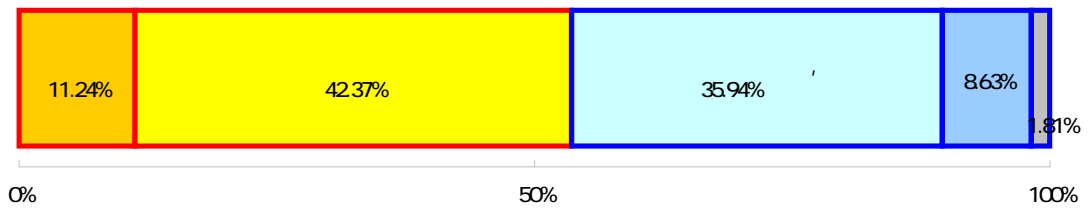
1	10.44%	52	
2	33.33%	166	43.78%
3	43.37%	216	53.61%
4	10.24%	51	
0	2.61%	13	



問27 高齢者が地域で生き生きと暮らしていると感じますか。

42.37% 211
 " " 53.61% " " 35.94% 179
 " " 44.58%
 2573

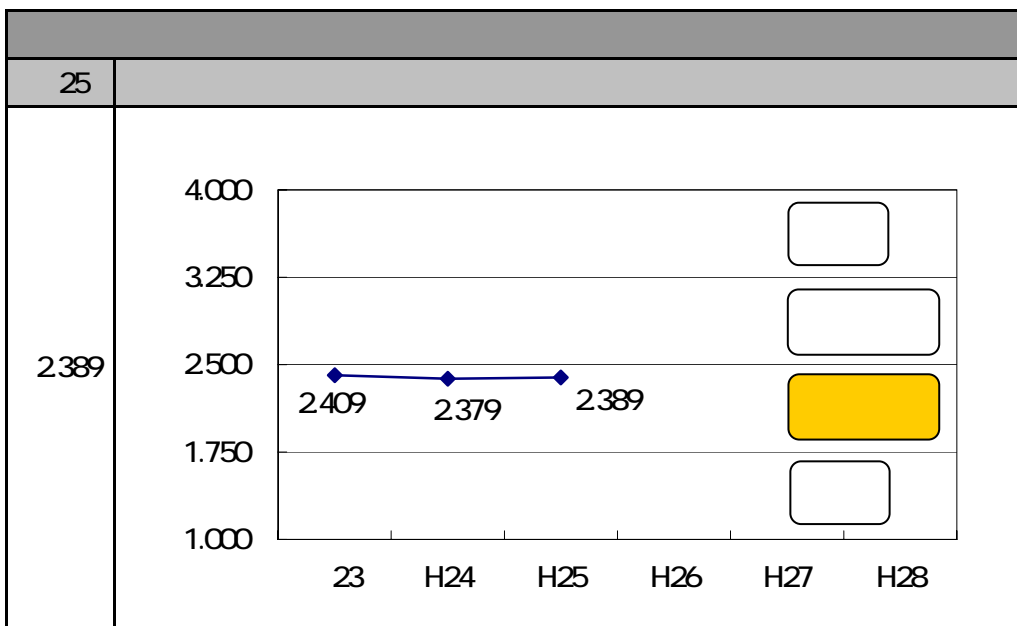
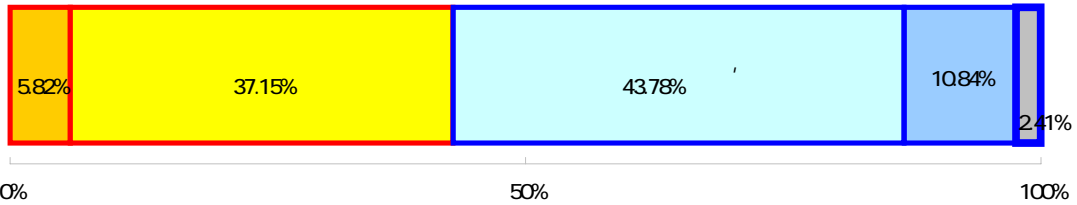
1		11.24%	56	
2		42.37%	211	53.61%
3		35.94%	179	44.58%
4		8.63%	43	
0		1.81%	9	



問28 障がいのある人が地域で生き生きと暮らしていると感じますか。

43.78% 218
 " " 42.97% " " 37.15% 185
 " " 54.62%
 2,389

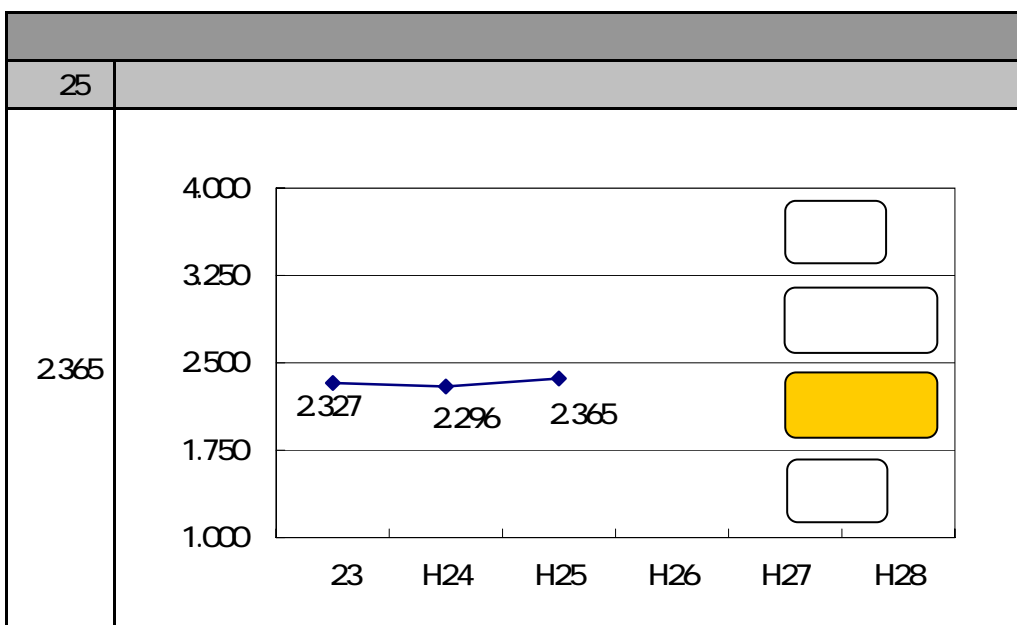
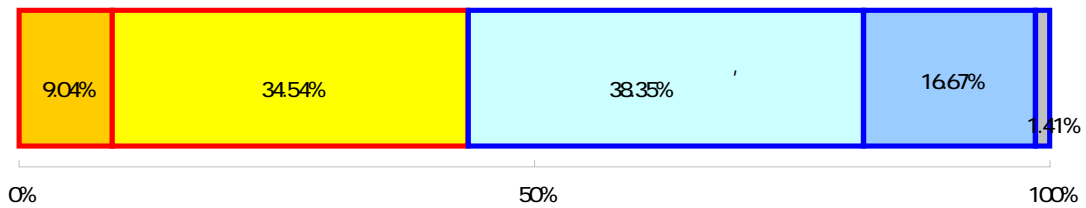
25			
1		5.82%	29
2		37.15%	185
3		43.78%	218
4		10.84%	54
0		2.41%	12



問29 地区内の道路環境に満足していますか。

38.35% 191
 " 43.57
 " 55.02%
 2,365

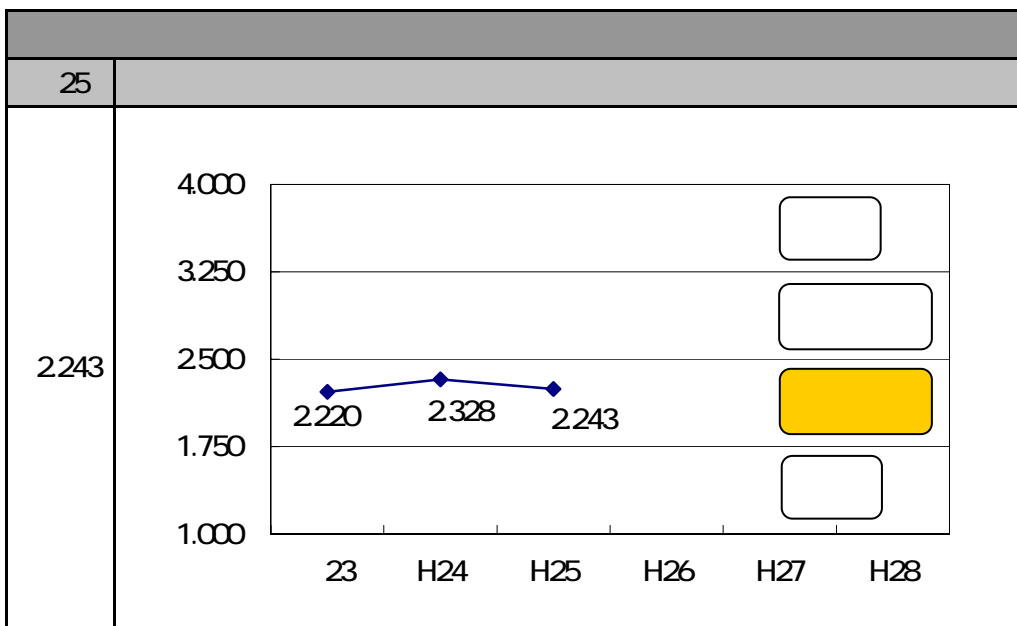
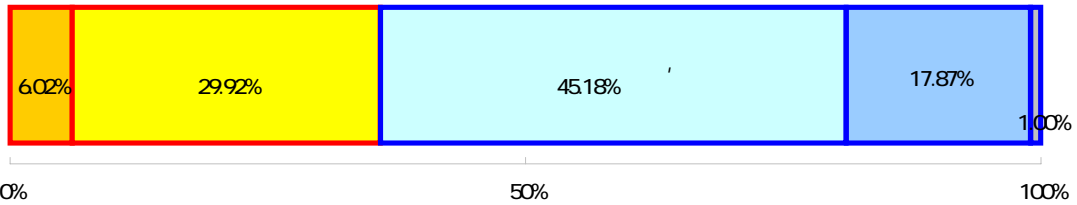
1	9.04%	45	
2	34.54%	172	43.57%
3	38.35%	191	55.02%
4	16.67%	83	
0	1.41%	7	



問30 市内の公園が地域の憩いの場になっていると思いますか。

45.18% 225
 " " 35.94
 " " 63.05%
 2243

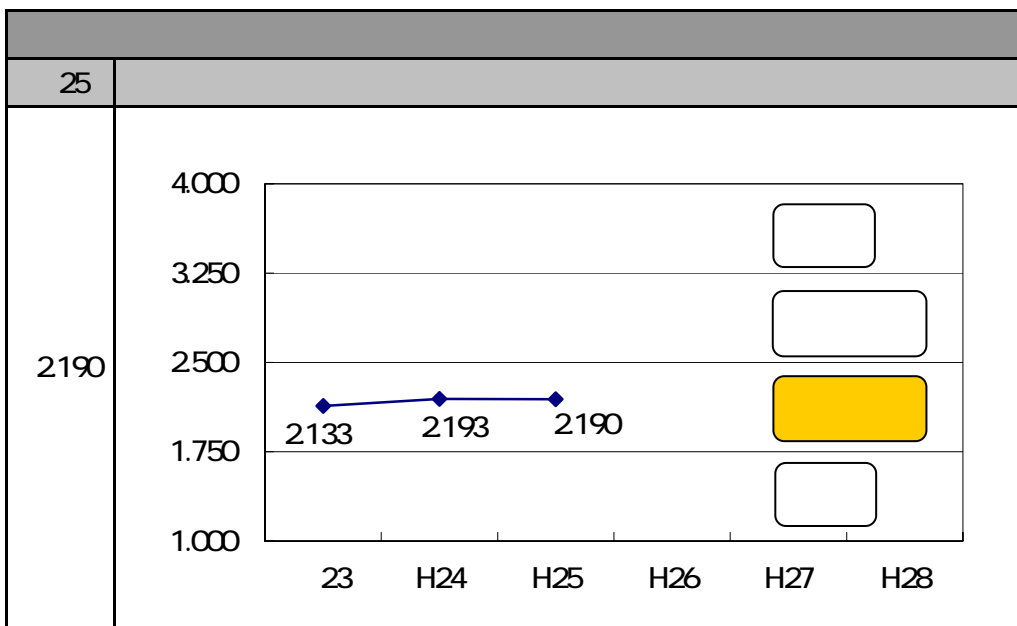
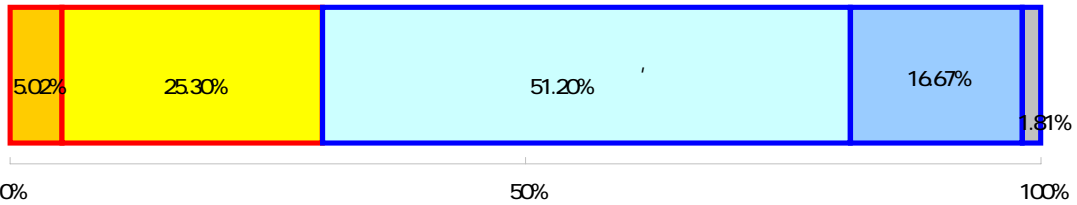
1		6.02%	30
2		29.92%	149
3		45.18%	225
4		17.87%	89
0		1.00%	5



問3 1 市内に快適で美しい水辺環境があると思いますか。

51.20% 255
 " " 30.32 " " 67.87%
 2190

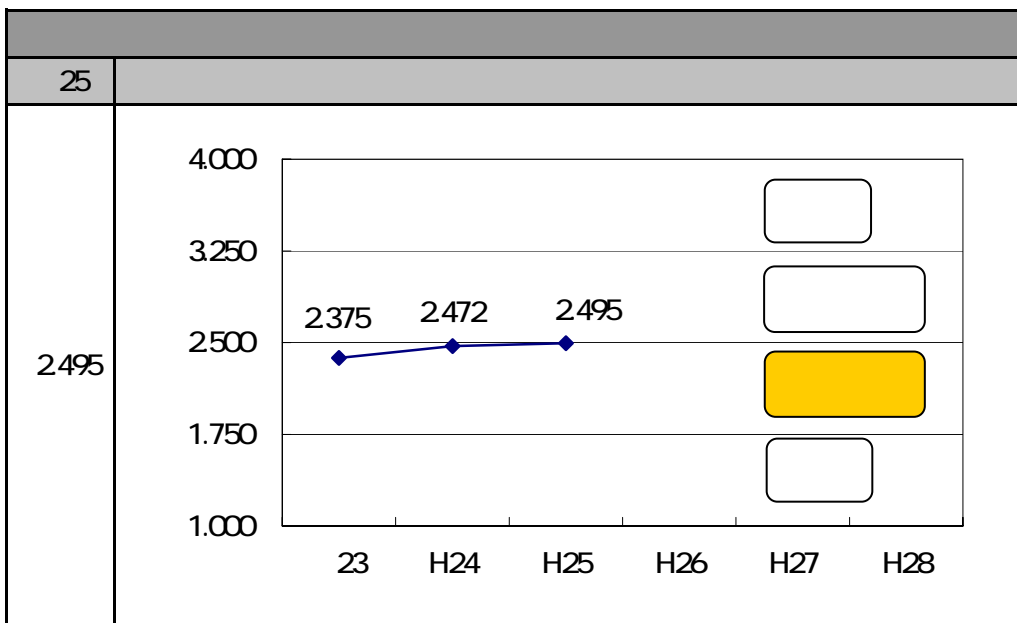
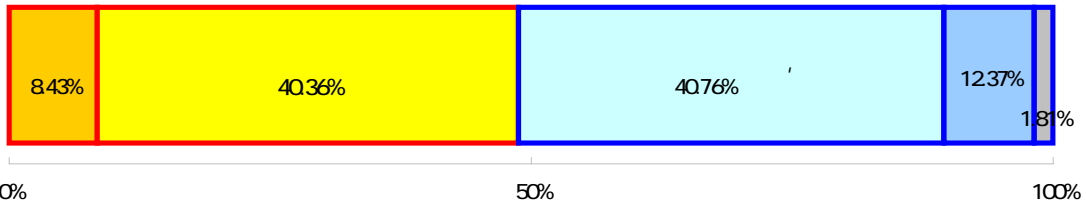
1	5.02%	25	
2	25.30%	126	30.32%
3	51.20%	255	67.87%
4	16.67%	83	
0	1.81%	9	



問32 生活環境や河川等の水質が改善されていると思いますか。

40.76% 203
 " 48.80% " 40.36% 201
 " 49.40%
 2495

1	8.43%	42	48.80%
2	40.36%	201	49.40%
3	40.76%	203	
4	8.63%	43	
0	1.81%	9	



問33 安心・安全な水が安定して使用できていると思いますか。

46.18% 230

25.50% 127

"

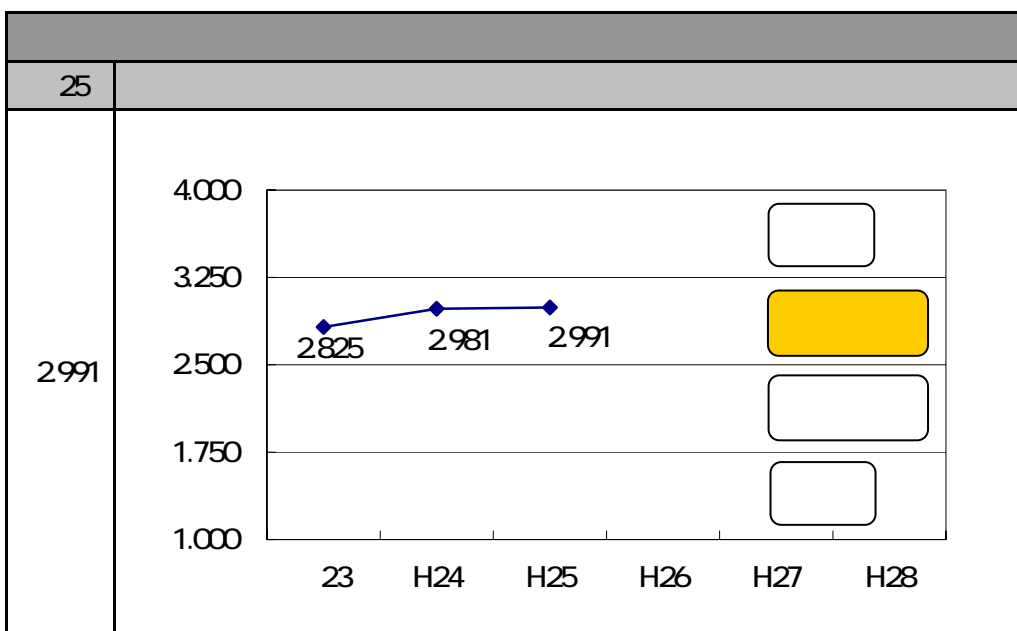
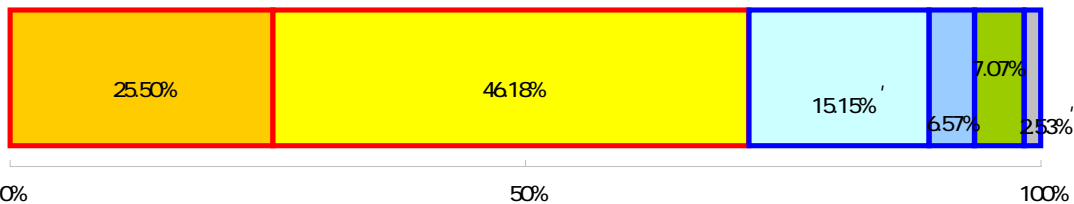
" 71.69%

"

" 21.89%

2991

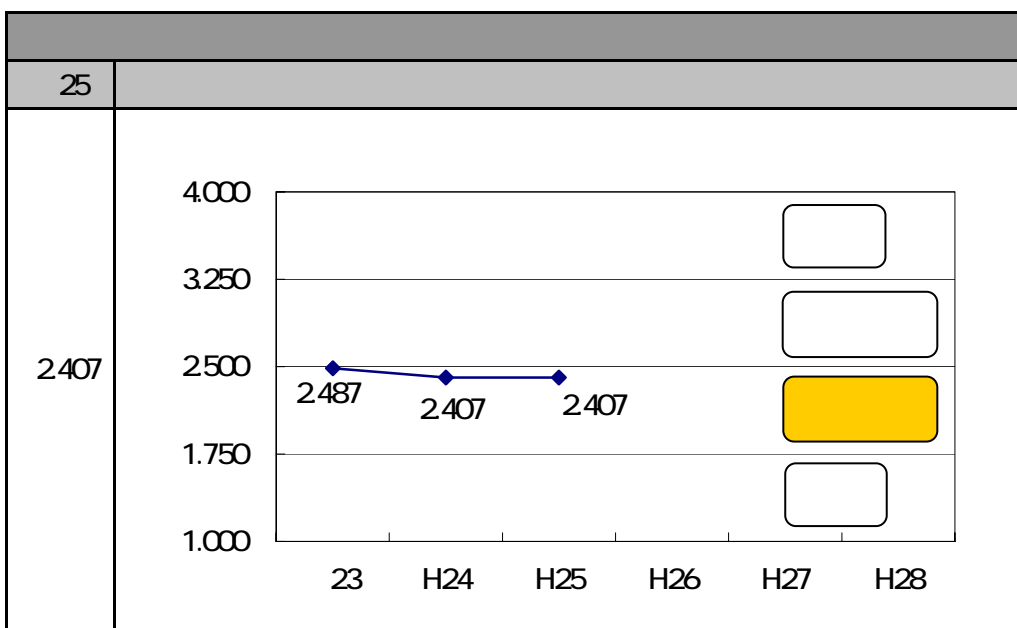
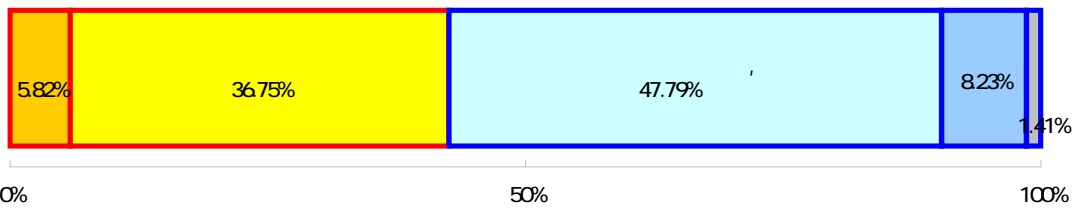
1		25.50%	127
2		46.18%	230
3		17.47%	87
4		4.42%	22
5		4.82%	24
0		1.61%	8



問34 良好な住環境が形成されていると思いますか。

47.79% 238
 " " 4257
 " " 56.02%
 2407

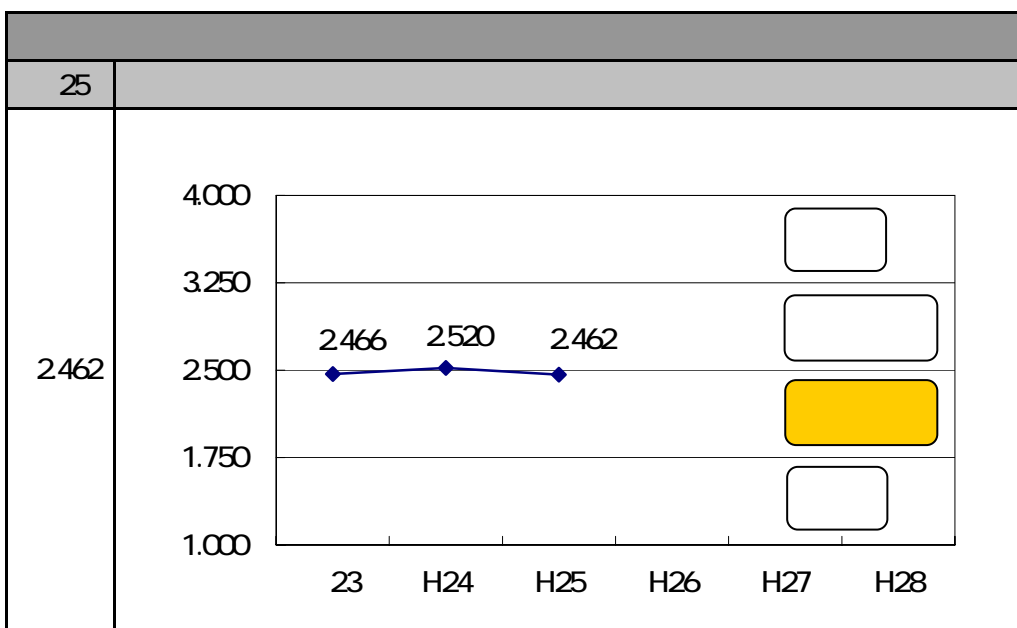
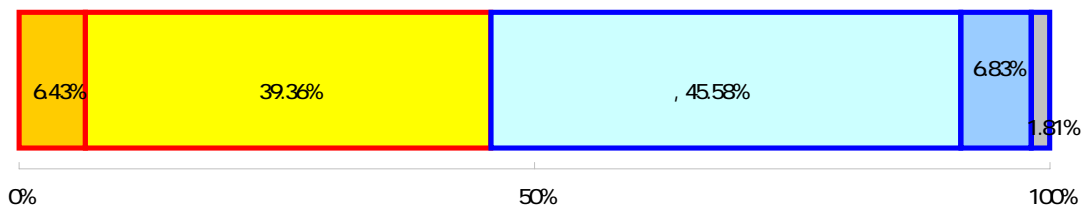
1	5.82%	29	
2	36.75%	183	42.57%
3	47.79%	238	56.02%
4	8.23%	41	
0	1.41%	7	



問36 防災に関する正しい知識が身についていますか。

196 45.58% 227 39.36%
 " 45.78 " 52.41%
 2462

25			
1	6.43%	32	
2	39.36%	196	45.78%
3	45.58%	227	52.41%
4	6.83%	34	
0	1.81%	9	



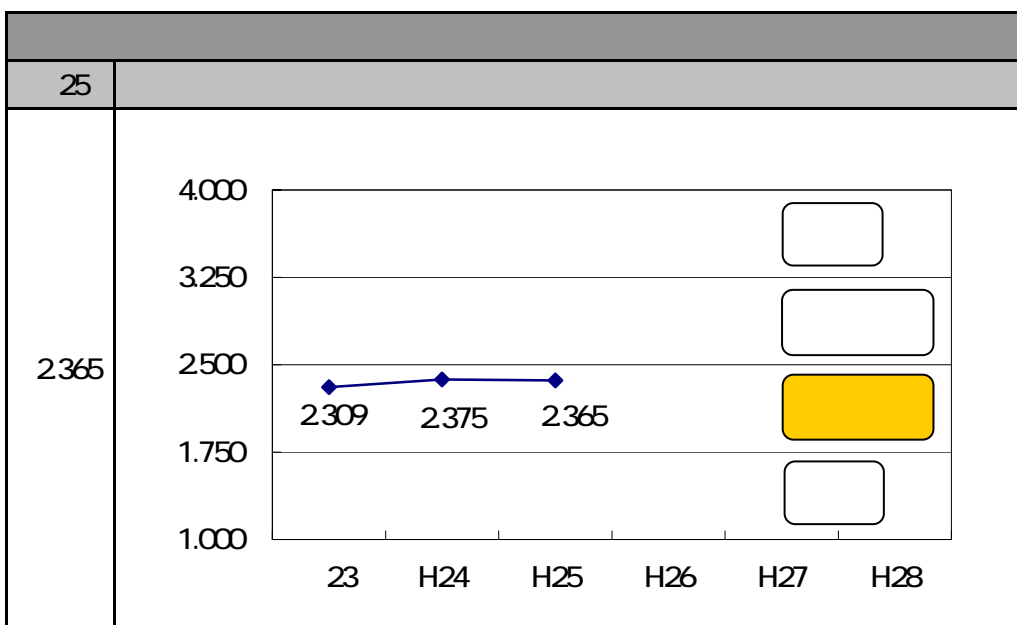
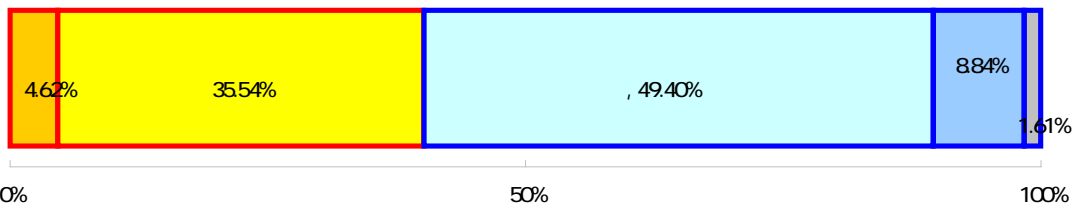
問37 防災に関する行動が身についていますか。

177 49.40% 246 35.54%

" " 4016 " " 58.23%

2365

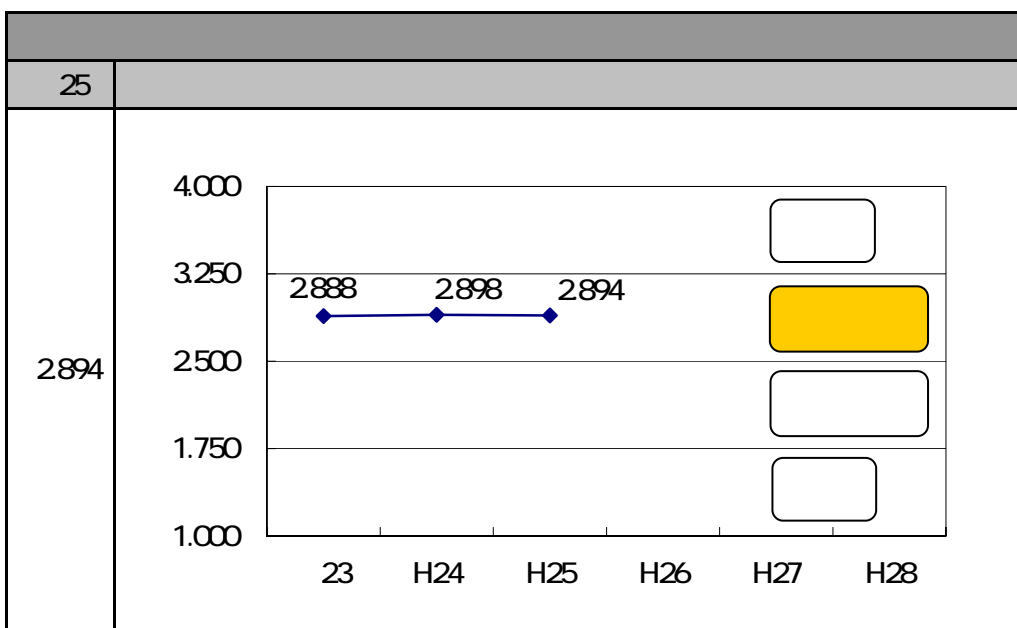
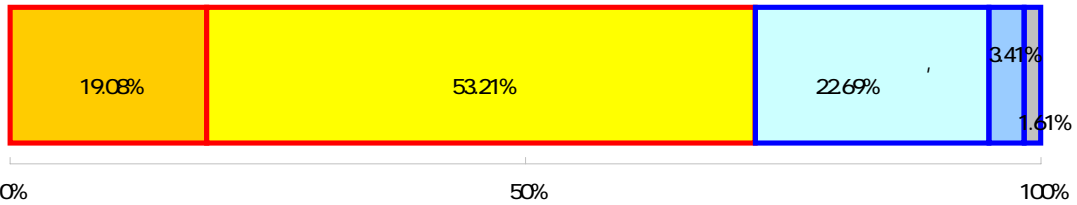
1		4.62%	23
2		35.54%	177
3		49.40%	246
4		8.84%	44
0		1.61%	8



問38 安心できる消防・救急体制が整備されていると感じますか。

53.21% 265
 " " 72.29
 " " 26.10%
 2894

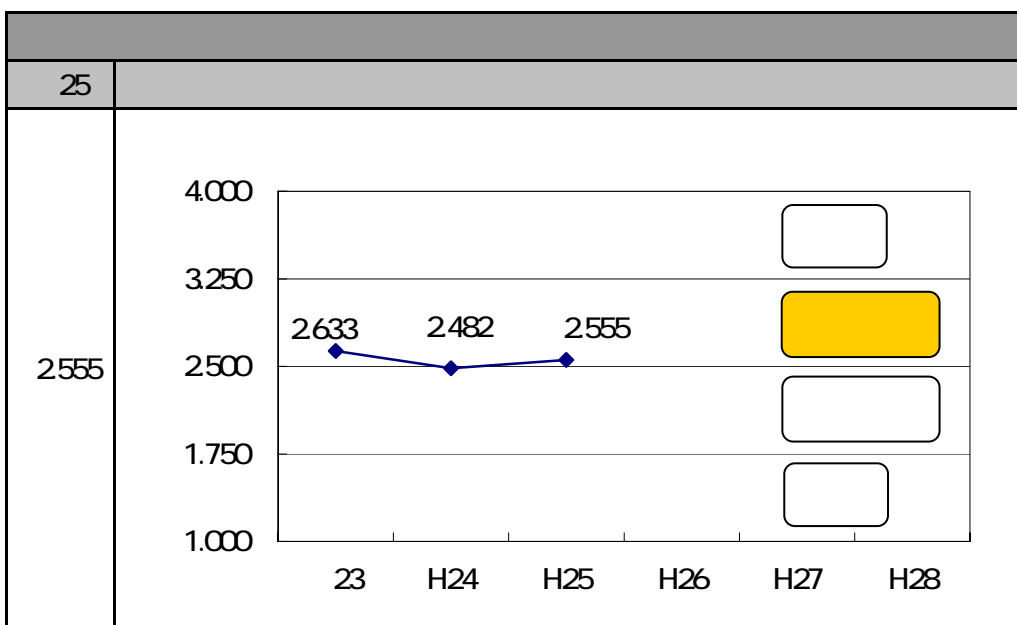
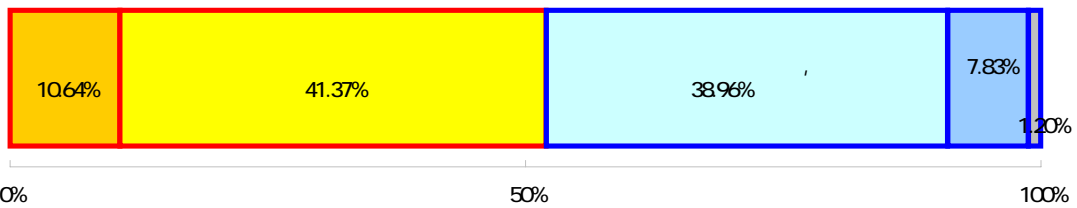
1		19.08%	95
2		53.21%	265
3		22.69%	113
4		3.41%	17
0		1.61%	8



問39 犯罪の多様化・巧妙化が進んでいますが、安心して暮らせていますか。

41.37% 206
 " " 5201
 " " 46.79%
 2555

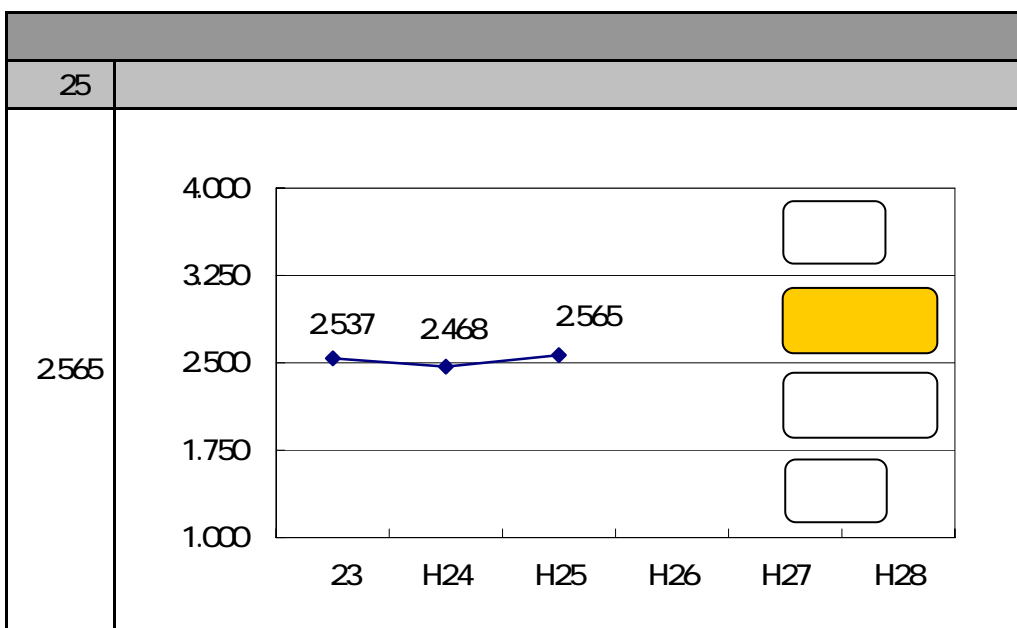
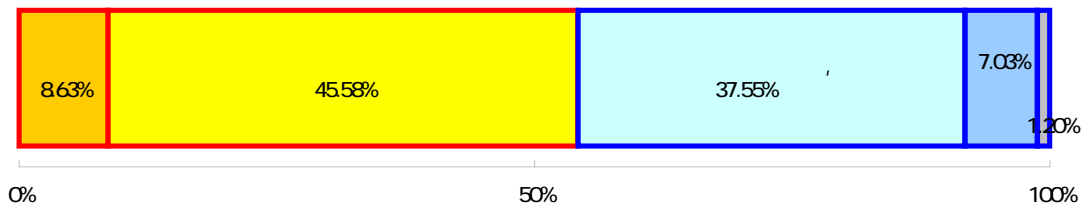
1	10.64%	53	
2	41.37%	206	52.01%
3	38.96%	194	46.79%
4	7.83%	39	
0	1.20%	6	



問40 交通安全対策が充実していると感じますか。

45.58% 227
 " " 54.22
 " " 44.58%
 2565

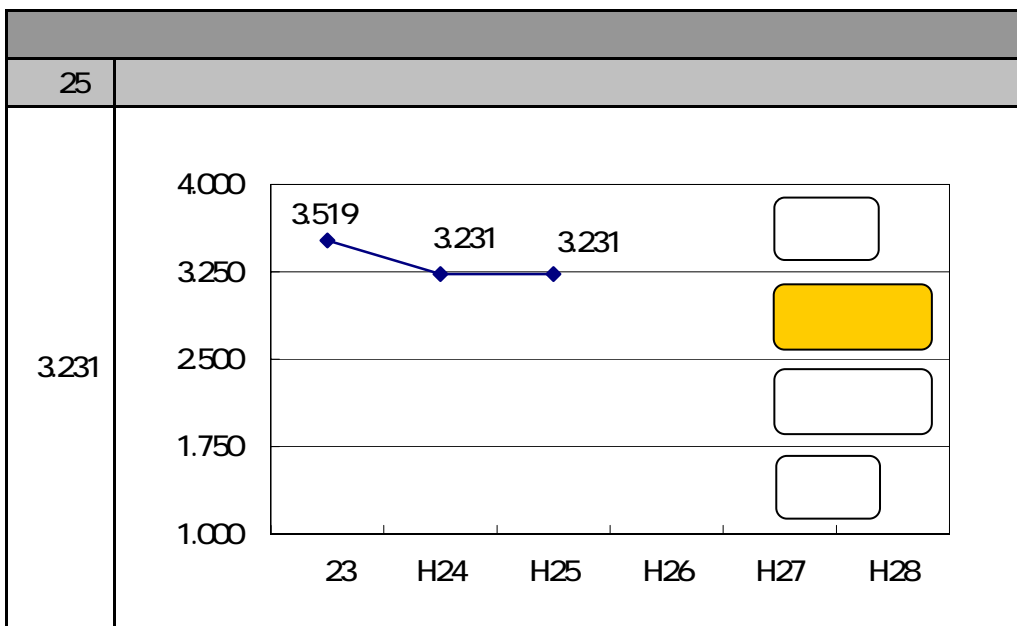
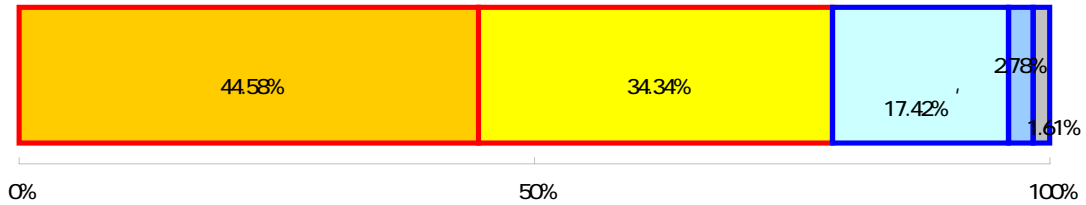
1	8.63%	43	
2	45.58%	227	54.22%
3	37.55%	187	44.58%
4	7.03%	35	
0	1.20%	6	



問4 1 日頃から消費者被害に遭わないように注意していますか。

44.58% 222
 " " 78.92% " " 19.48%
 3,231

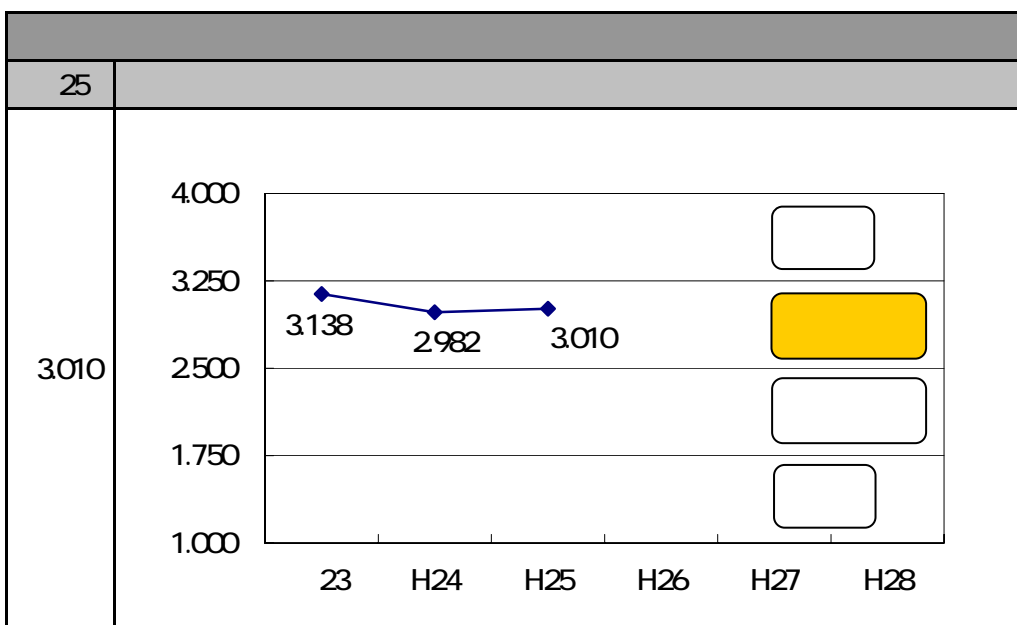
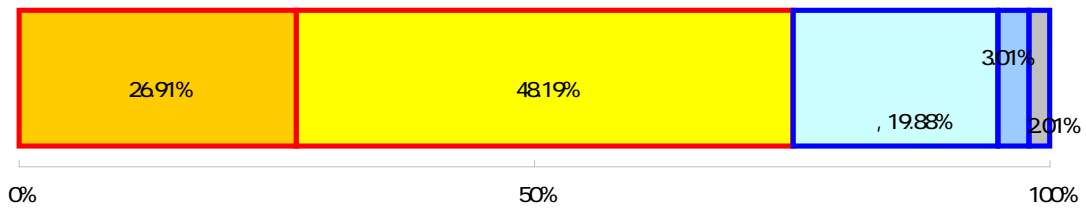
1	44.58%	222	
2	34.34%	171	78.92%
3	17.07%	85	
4	2.41%	12	19.48%
0	1.61%	8	



問42 日常生活において、環境に配慮していますか。

48.19% 240 " 75.10% " 26.91% 134
 " " 22.89%
 3,010

1		26.91%	134
2		48.19%	240
3		19.88%	99
4		3.01%	15
0		2.01%	10



問43 ごみの減量化・リサイクルを実施していますか。

58.03% 289

28.71% 143

"

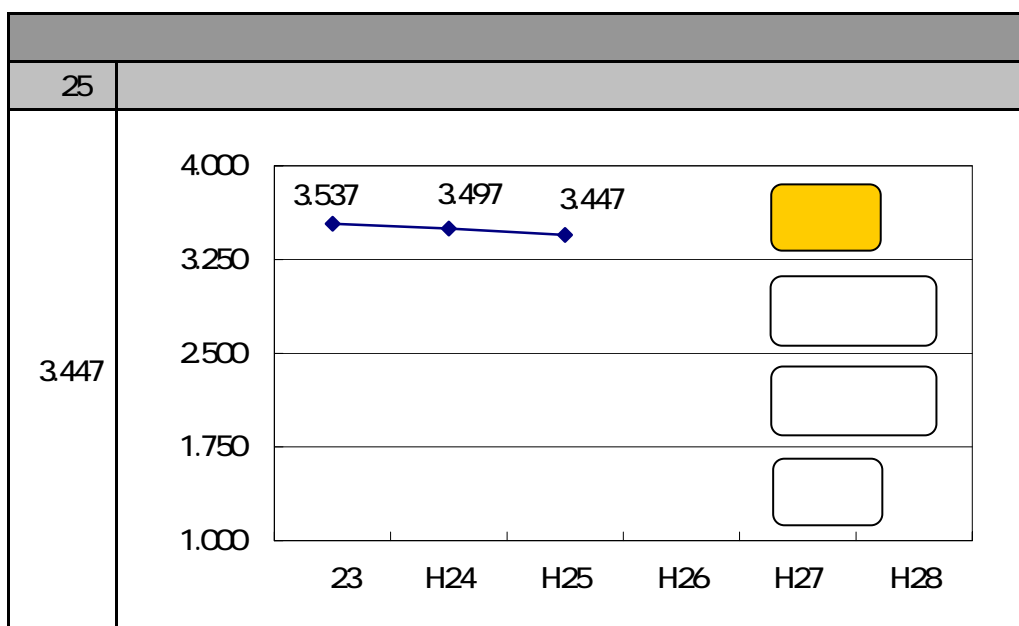
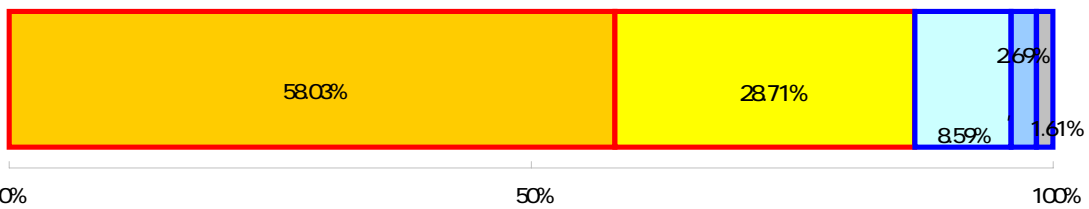
" 86.75%

"

" 11.65%

3,447

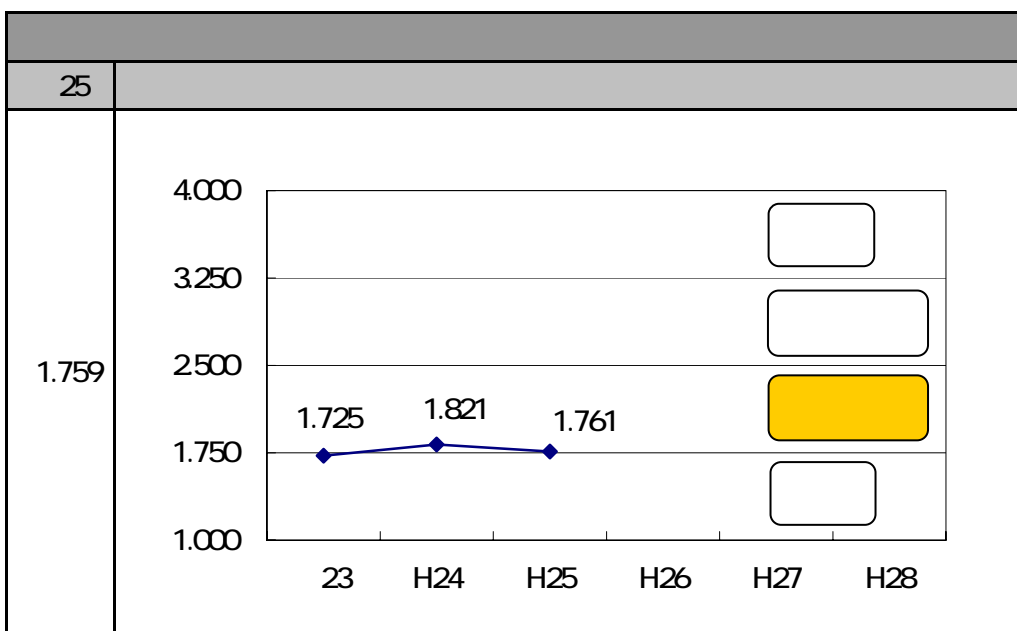
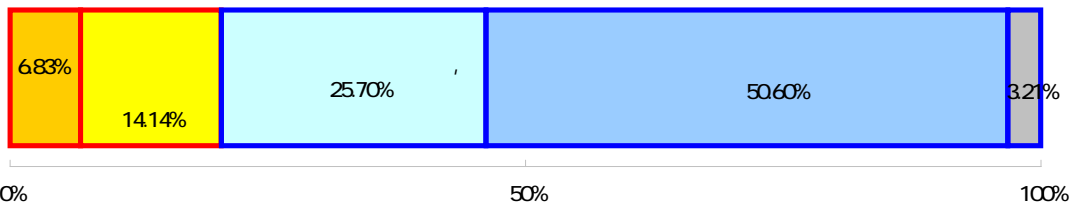
1		58.03%	289
2		28.71%	143
3		9.24%	46
4		2.41%	12
0		1.61%	8



問44 地域における子ども（幼児）の育成活動に参加していますか。

50.60% 252
 " " 20.48% " " 76.31%
 1.761

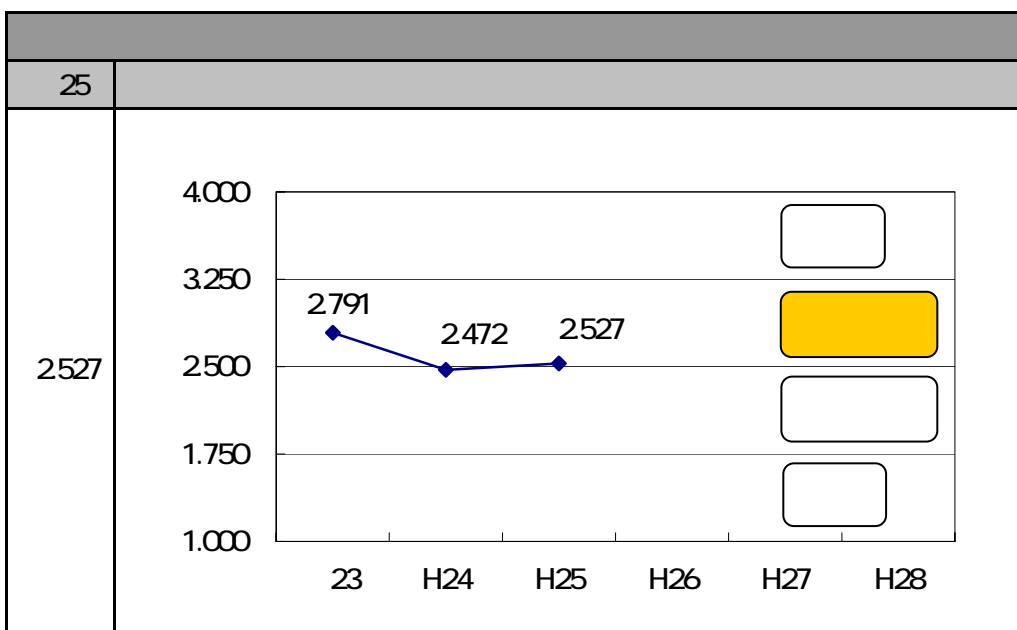
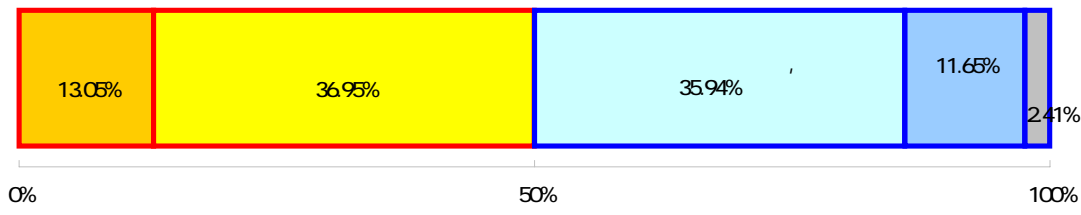
1	6.83%	34	
2	13.65%	68	20.48%
3	25.70%	128	
4	50.60%	252	76.31%
0	3.21%	16	



問45 お住まいの地区の学校は、地域に開かれた学校だと思いますか。

36.95% 184 " 5000 " 35.94% 179
 " " 47.59%
 2527

1		13.05%	65	
2		36.95%	184	50.00%
3		35.94%	179	47.59%
4		11.65%	58	
0		2.41%	12	



問46 心身ともに健やかな子どもたち（青少年）を地域ぐるみで育成していると感じていますか。

46.99% 234

33.53% 167

"

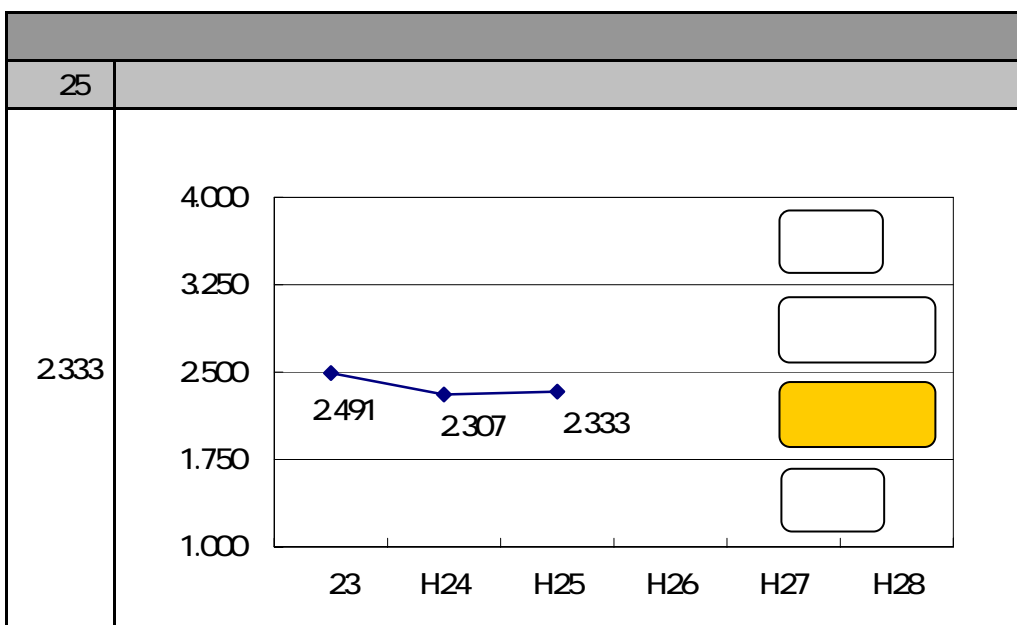
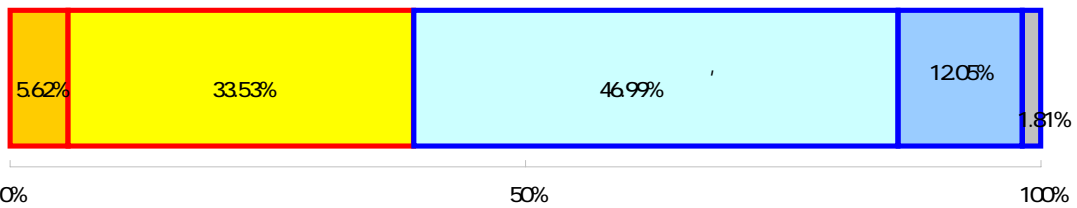
" 39.16

"

" 59.04%

2,333

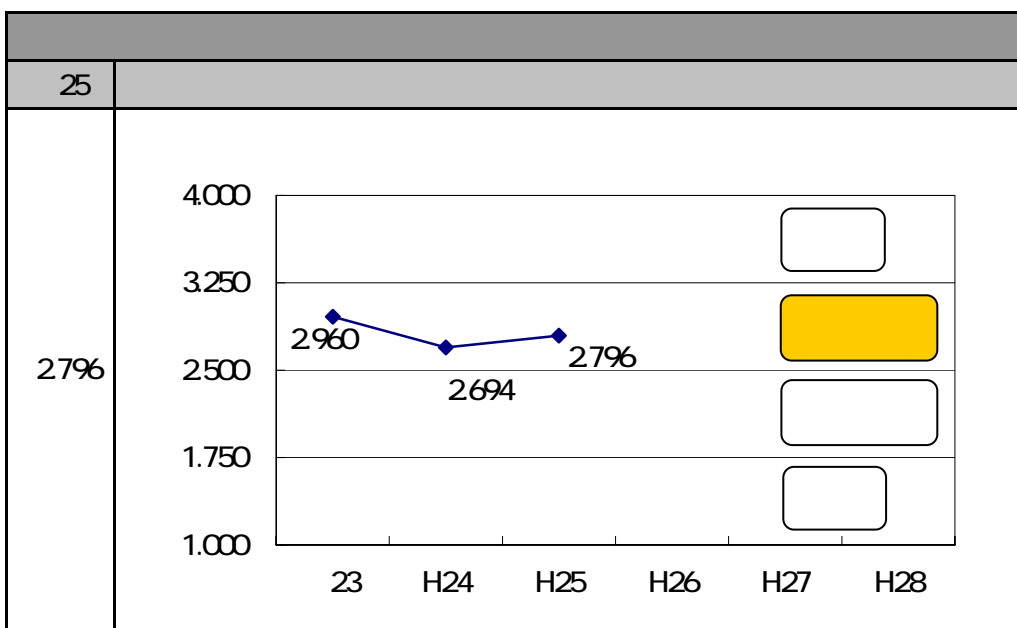
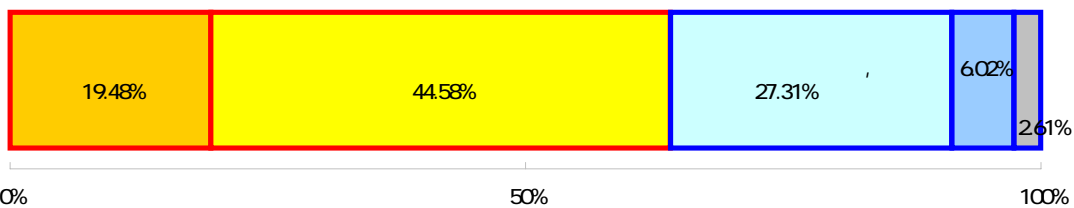
1		5.62%	28
2		33.53%	167
3		46.99%	234
4		12.05%	60
0		1.81%	9



問47 生涯学習をする施設（公民館・図書館等）が充実していると思いますか。

44.58% 222
 " " 64.06
 " " 33.33%
 27%

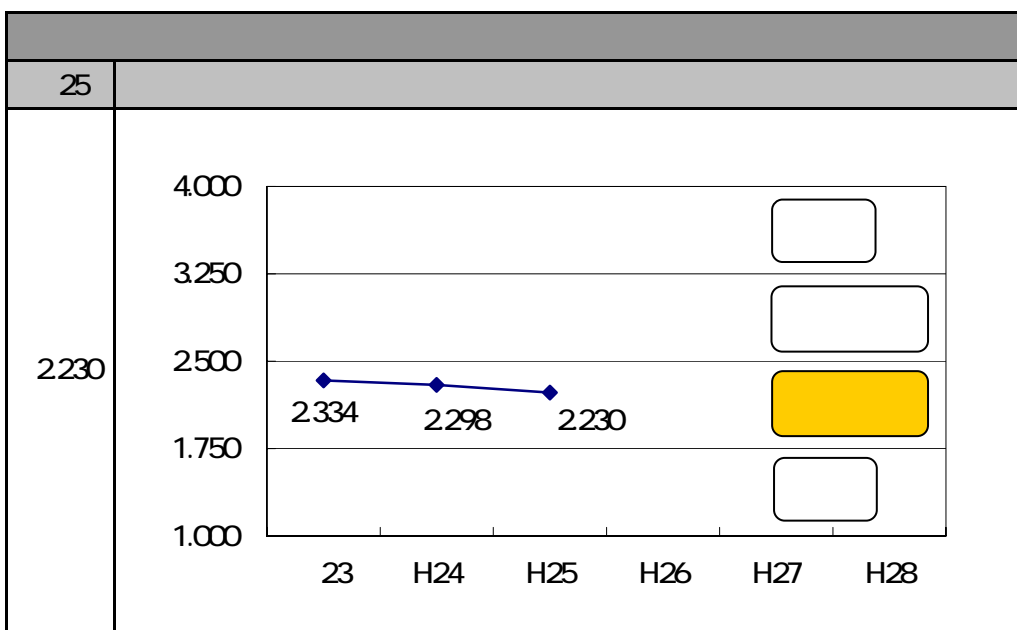
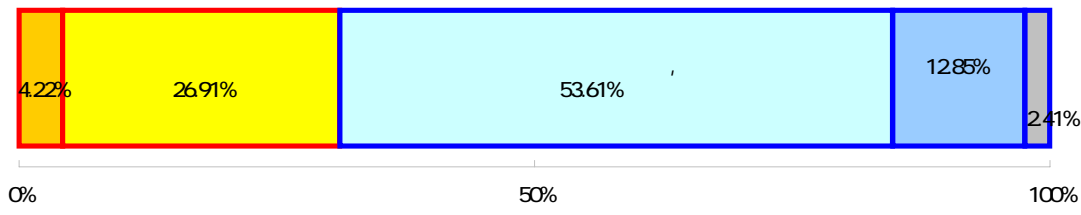
1	19.48%	97	
2	44.58%	222	64.06%
3	27.31%	136	33.33%
4	6.02%	30	
0	2.61%	13	



問49 市内の歴史的・文化的資源が有効に活用されていると感じますか。

53.61% 267
 " 31.12% " 66.47%
 2,230

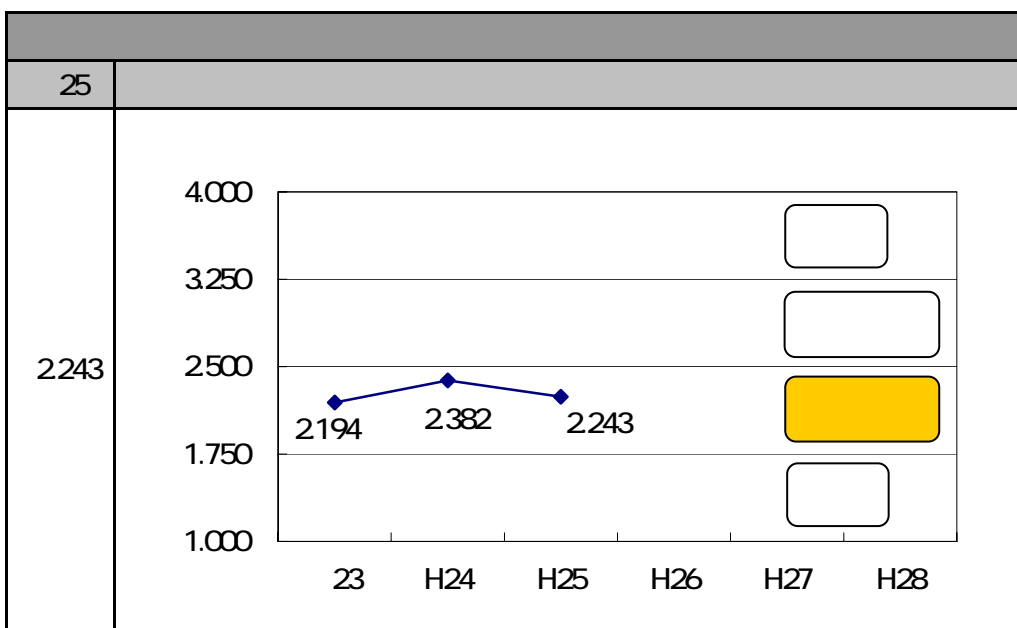
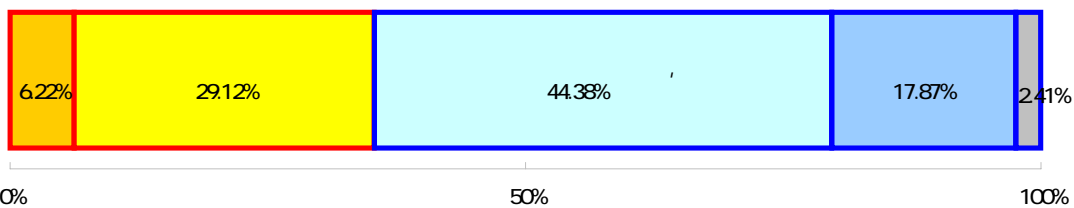
1	4.22%	21	
2	26.91%	134	31.12%
3	53.61%	267	66.47%
4	12.85%	64	
0	2.41%	12	



問50 日常生活の中で芸術・文化に親しんでいますか。

145 44.38% 221 29.12%
 " " 35.34% " " 62.25%
 2243

1	6.22%	31	35.34%
2	29.12%	145	62.25%
3	44.38%	221	
4	17.87%	89	
0	2.41%	12	



問5 1 日常生活の中で在住外国人と交流していますか。

62.85% 313

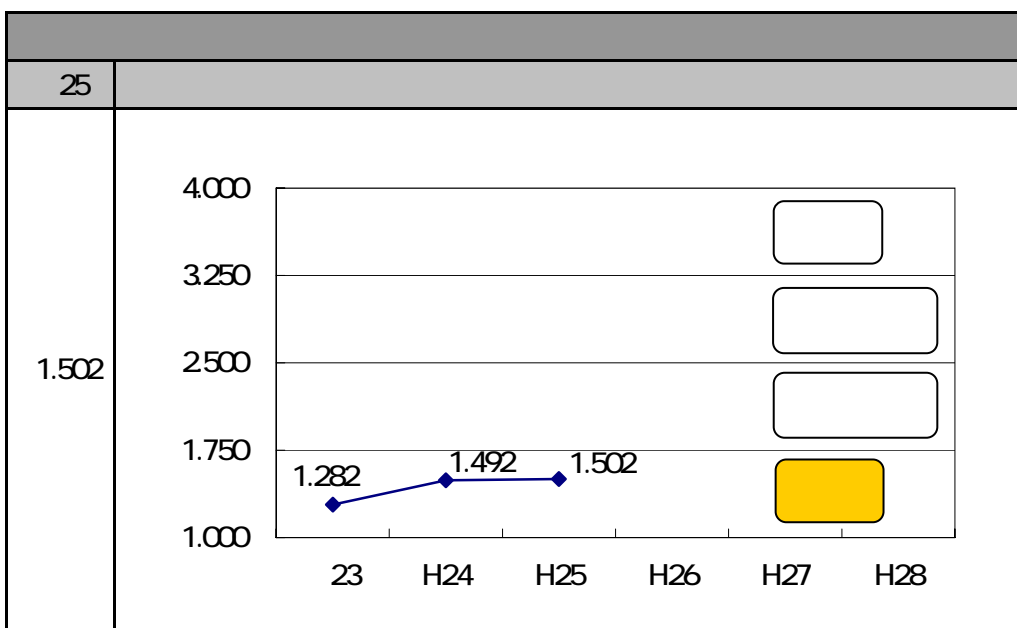
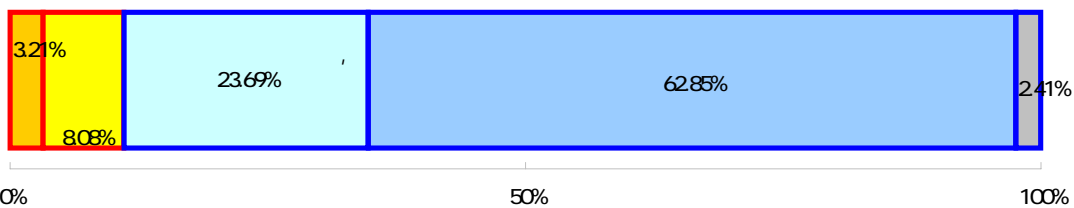
23.69% 118

" " 11.04

" " 86.55%

1.502

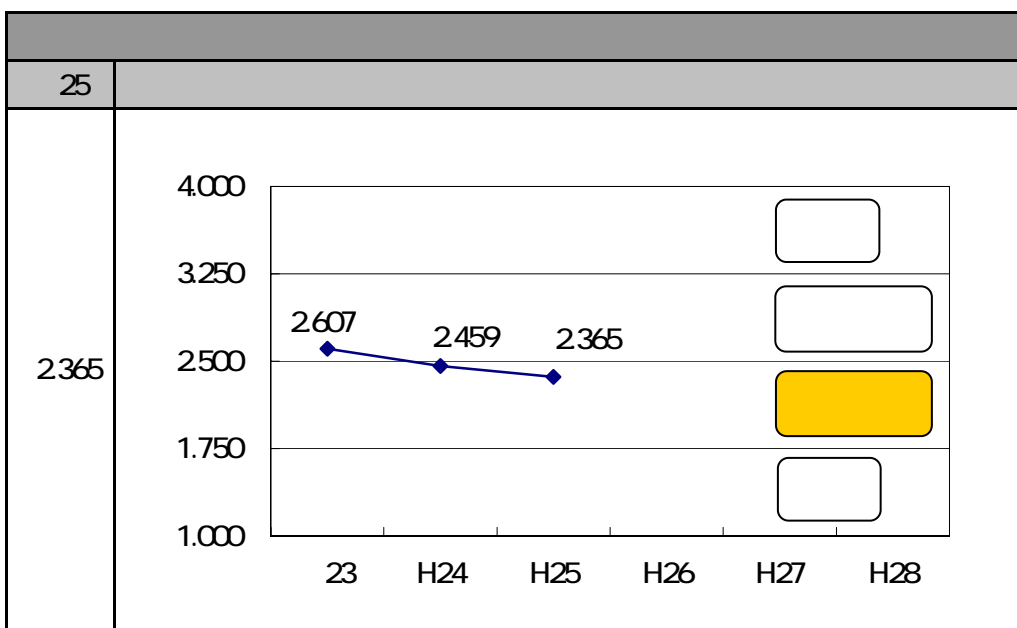
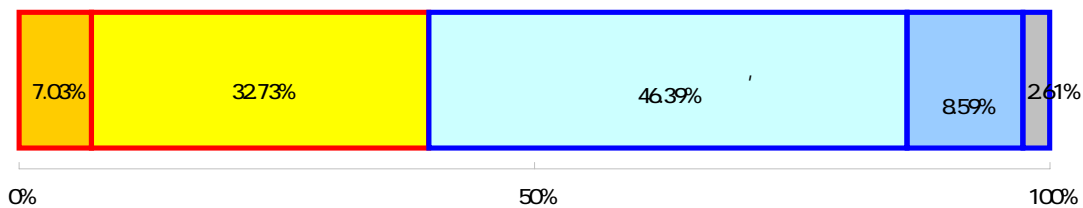
回答	割合	人数
1	3.21%	16
2	7.83%	39
3	23.69%	118
4	62.85%	313
0	2.41%	12



問52 笠間市では人権が尊重されていると思いますか。

46.39% 231
 " " 39.76
 " " 57.63%
 2365

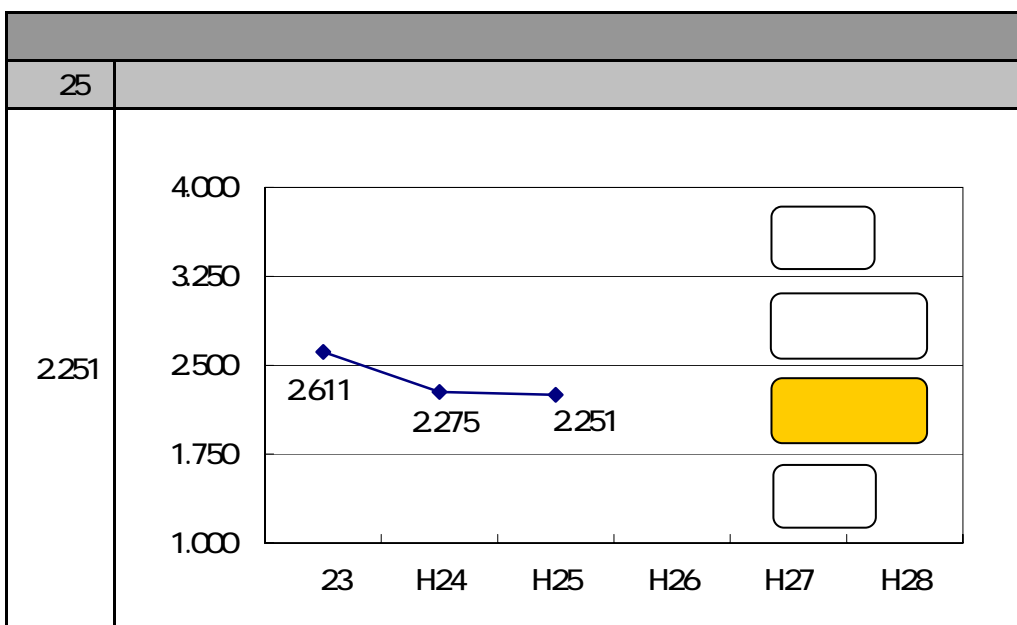
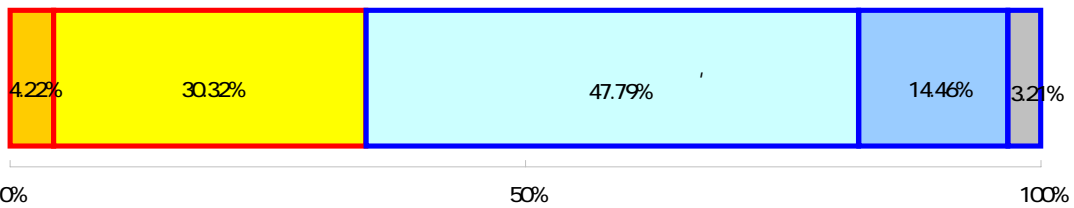
1		7.03%	35	
2		32.73%	163	39.76%
3		46.39%	231	57.63%
4		11.24%	56	
0		2.61%	13	



問53 各分野における男女の地位が平等だと思いますか。

47.79% 238
 " 34.54
 " 62.25%
 2,251

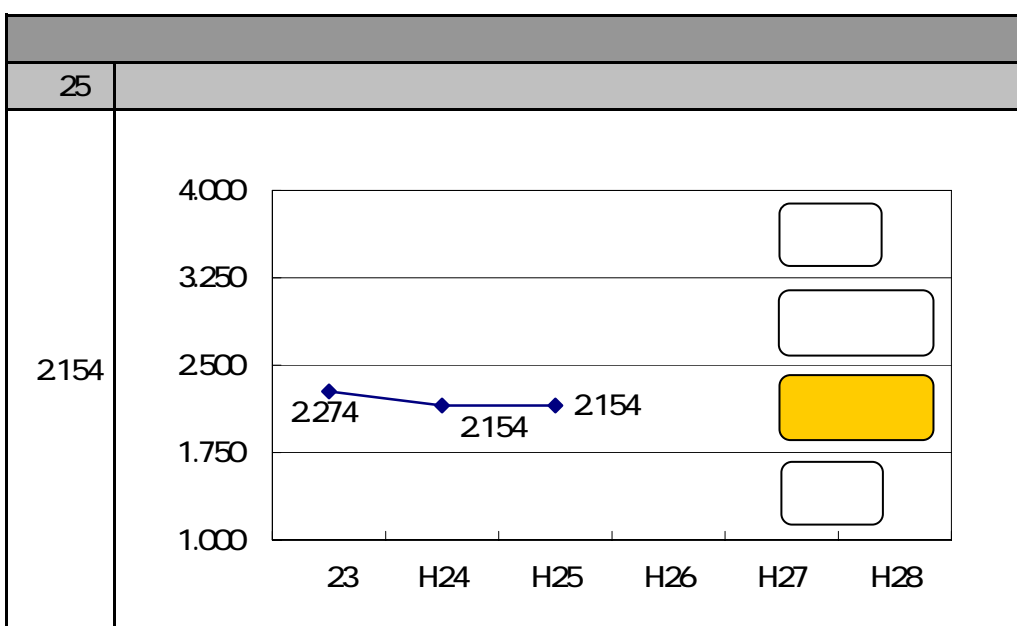
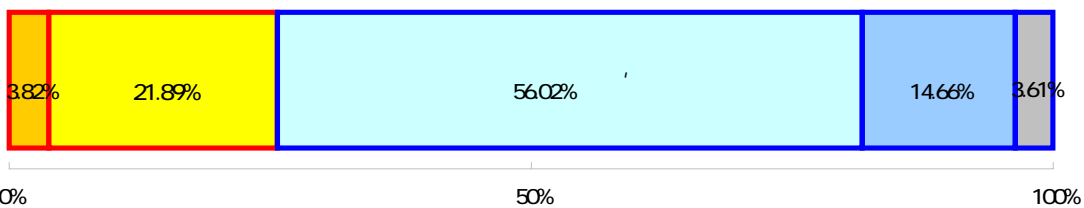
1		4.22%	21
2		30.32%	151
3		47.79%	238
4		14.46%	72
0		3.21%	16



問54 市民が新しい公共※の担い手になっていると思いますか。

56.02% 279
 " 25.70% " 109
 " 70.68%
 2154

1		3.82%	19
2		21.89%	109
3		56.02%	279
4		14.66%	73
0		3.61%	18



問56 市からの情報提供の手段や内容に満足していますか。

47.59% 237

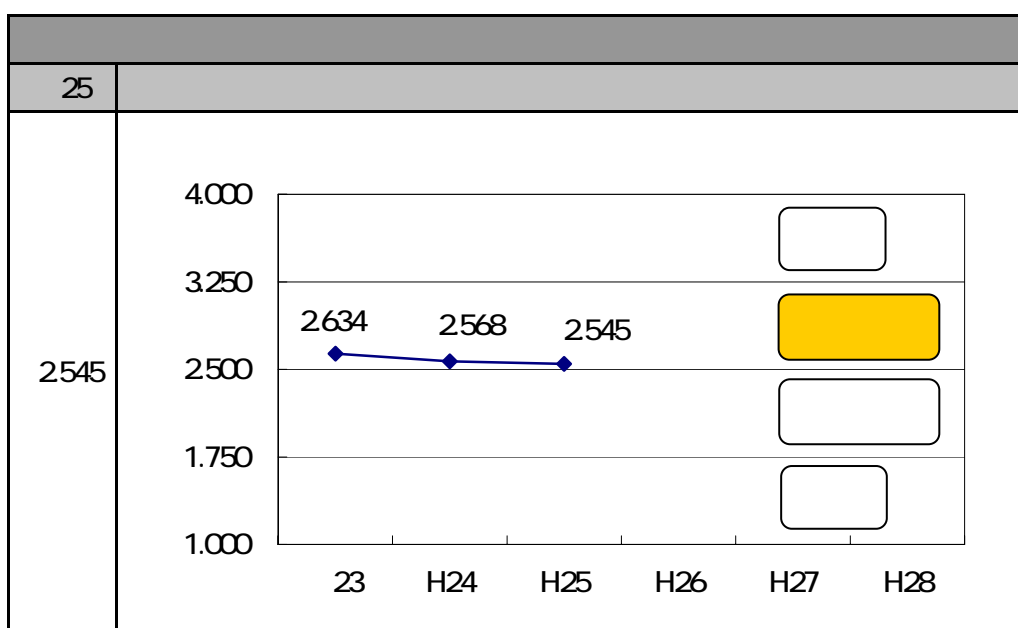
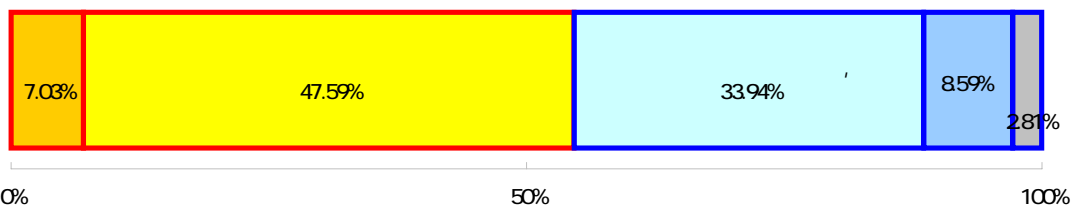
33.94% 169

" " 54.62

" " 42.57%

2545

1		7.03%	35
2		47.59%	237
3		33.94%	169
4		8.63%	43
0		2.81%	14



問57 笠間市では効率的で効果的な行政運営がされていると感じますか。

47.59% 237

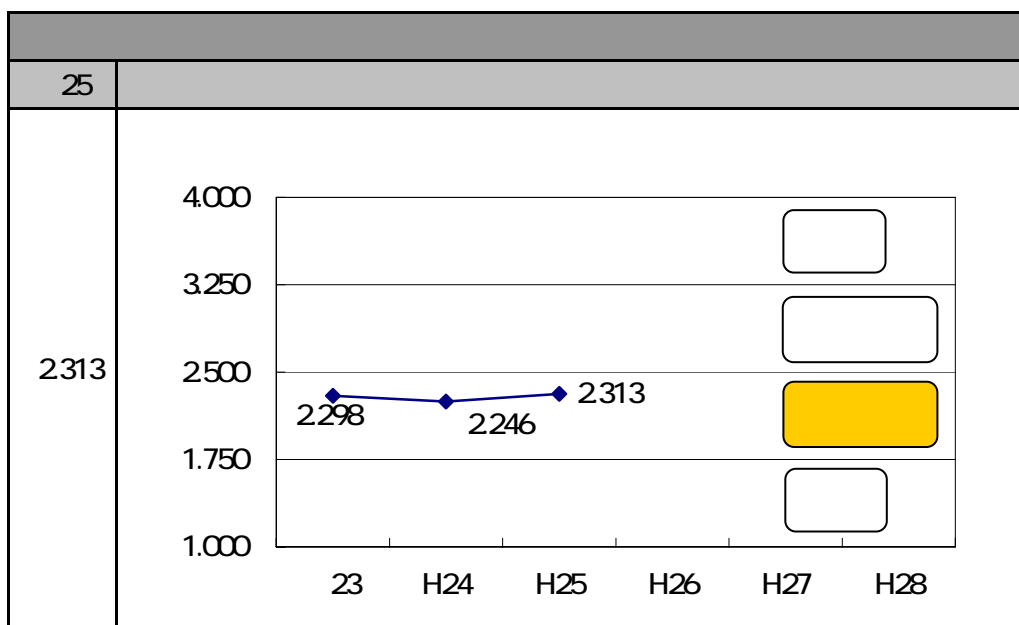
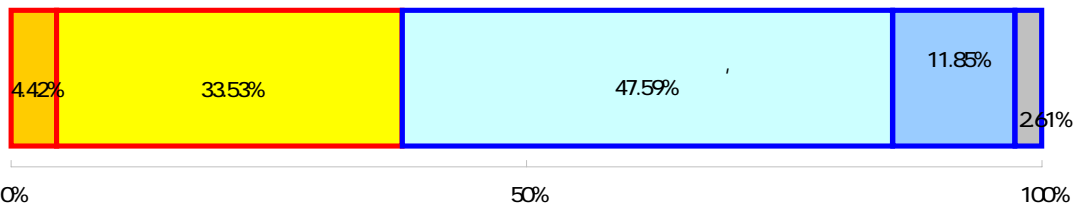
33.53% 167

" " 37.95

" " 59.44%

2313

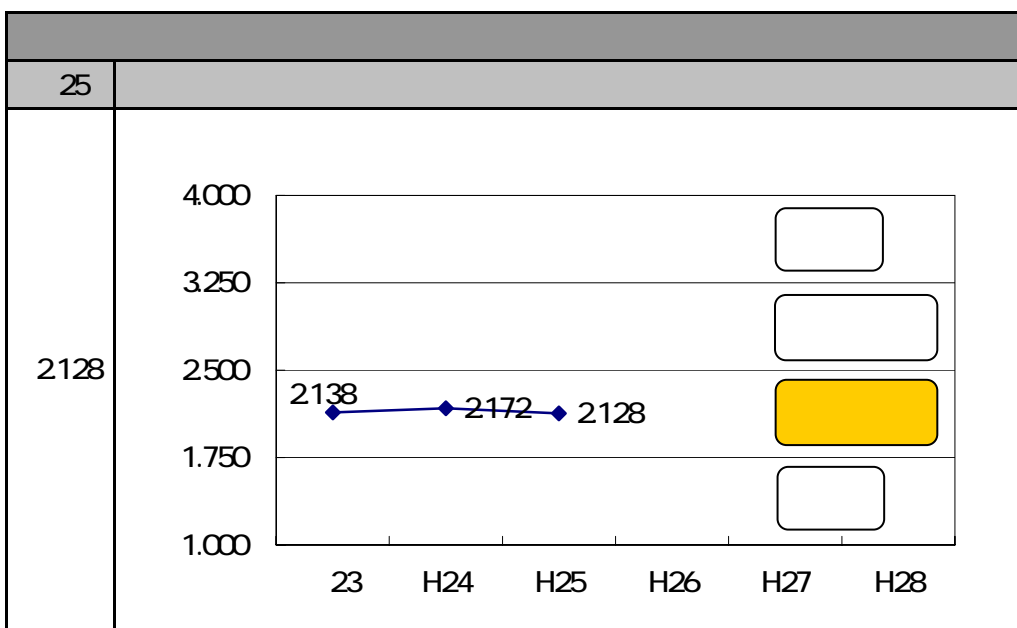
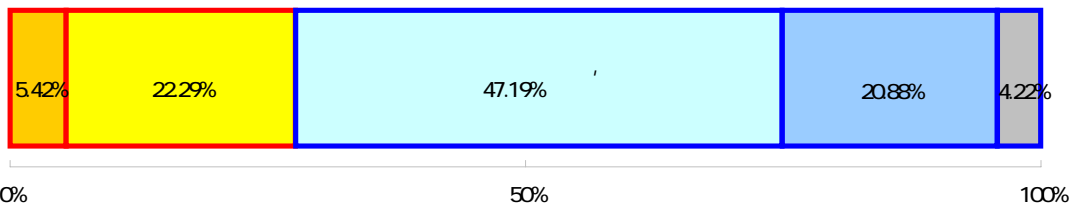
25			
1		4.42%	22
2		33.53%	167
3		47.59%	237
4		11.85%	59
0		2.61%	13



問58 電子サービスは利用しやすいですか。

47.19% 235
 " 27.71 " 111
 " 68.07%
 2128

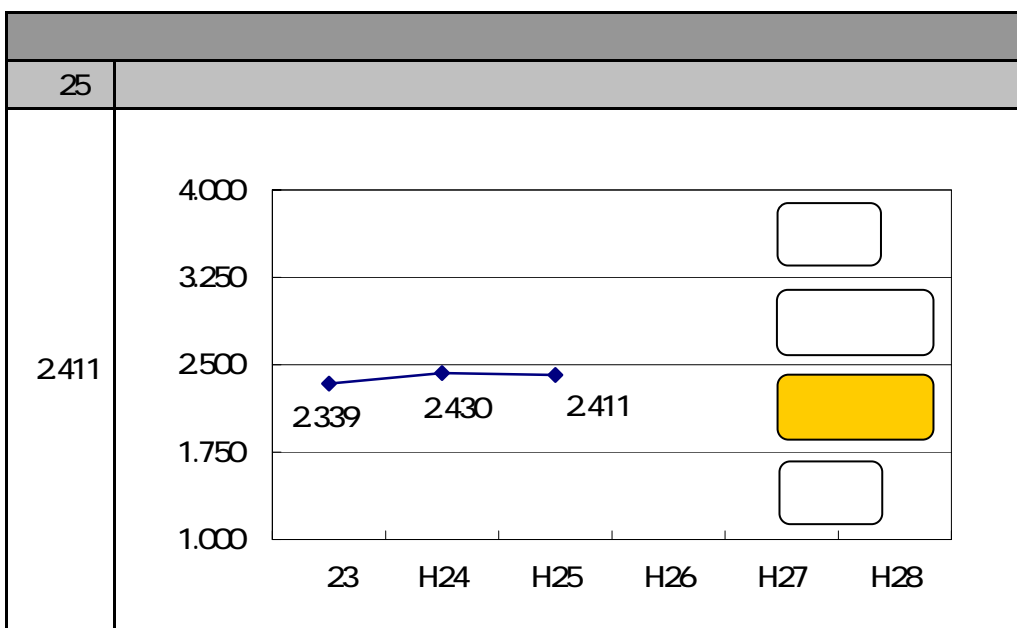
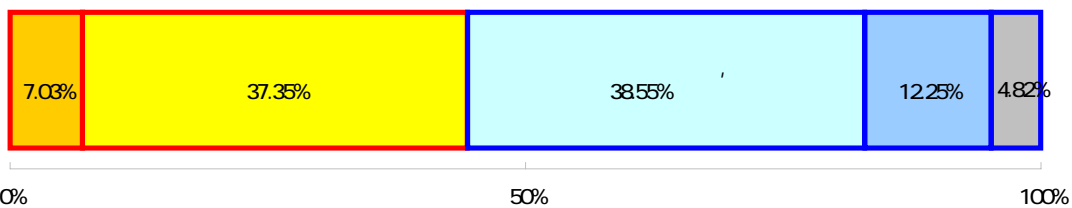
1		5.42%	27
2		22.29%	111
3		47.19%	235
4		20.88%	104
0		4.22%	21



問59 笠間市では健全な財政運営がされていると感じますか。

38.55% 192
 " 44.38
 " 50.80%
 2411

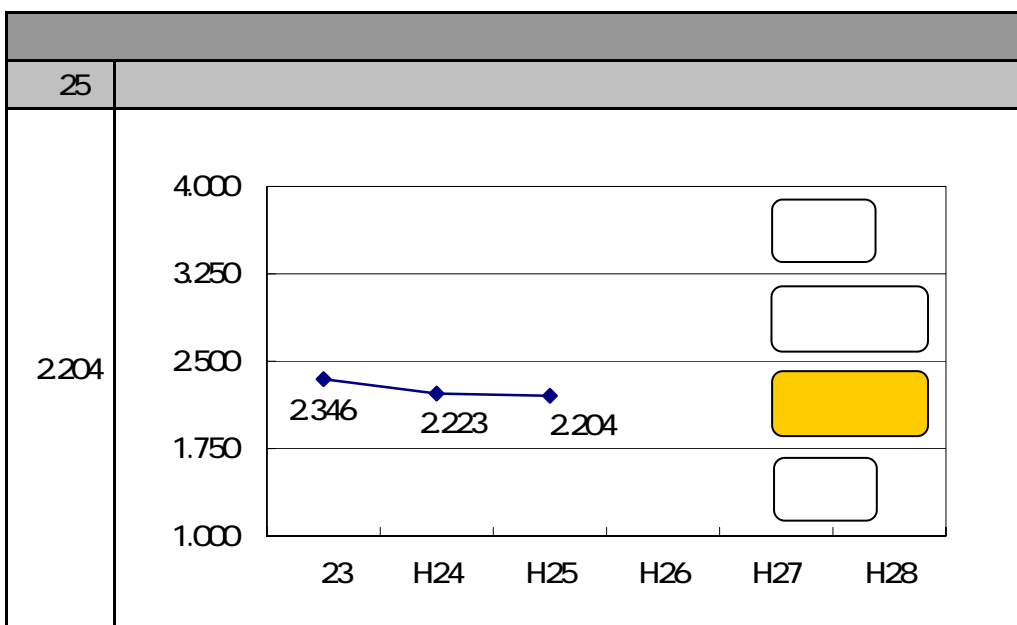
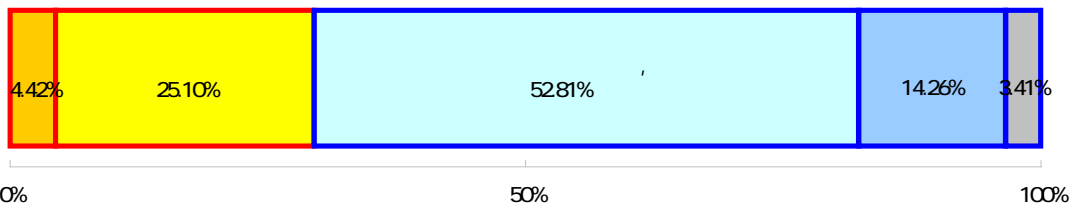
1		7.03%	35	
2		37.35%	186	44.38%
3		38.55%	192	50.80%
4		12.25%	61	
0		4.82%	24	



問60 他の市町村との連携・協力により、広域的な事業や交流が行われていると思いますか。

52.81% 263
 " " 29.52%
 " " 67.07%
 2,204

1	4.42%	22	
2	25.10%	125	29.52%
3	52.81%	263	67.07%
4	14.26%	71	
0	3.41%	17	



問62 未就学児がいる保護者の方にお聞きします。
 自分子どもとコミュニケーションがとれていると思いますか。

40.00% 32

35.00% 28

"

" 75.00

"

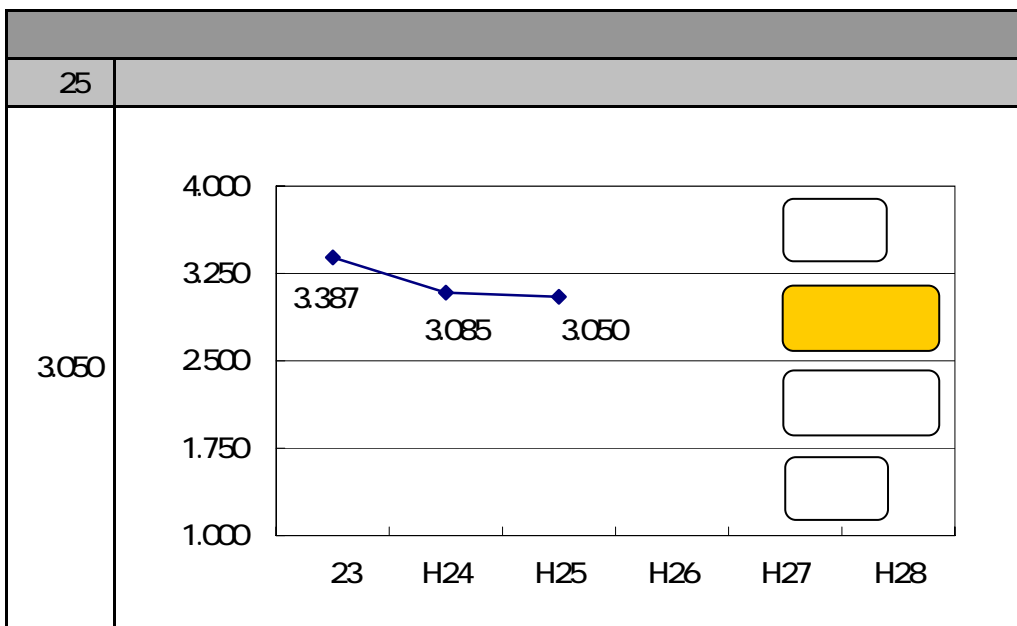
" 25.00%

3,050

25			
1		35.00%	28
2		40.00%	32
3		20.00%	16
4		5.00%	4
0		0.00%	0



0% 50% 100%



6. 參考資料

1	43	
2	41	
3	42	
4	62	
5	38	
6	33	
7	35	
8	24	
9	12	
10	47	
11	25	
12	16	
13	56	
14	40	
15	27	
16	14	
17	61	
18	39	
19	45	
20	17	
21	32	
22	36	
23	11	
24	13	
25	59	
26	26	
27	29	
28	23	
29	28	
30	34	
31	37	
32	52	
33	46	
34	57	
35	15	
36	30	
37	50	
38	53	
39	10	
40	55	
41	49	
42	48	
43	31	
44	60	
45	19	
46	18	
47	58	
48	54	
49	20	
50	44	
51	22	
52	21	
53	51	

"		"				
58.03%	28.71%	9.24%	2.41%	1.61%		86.75%
44.58%	34.34%	17.07%	2.41%	1.61%		78.92%
26.91%	48.19%	19.88%	3.01%	2.01%		75.10%
35.00%	40.00%	20.00%	5.00%	0.00%		75.00%
19.08%	53.21%	22.69%	3.41%	1.61%		72.29%
25.50%	46.18%	17.47%	4.42%	6.43%		71.69%
24.30%	46.79%	23.69%	3.61%	1.61%		71.08%
18.67%	46.99%	24.70%	8.23%	1.41%		65.66%
16.47%	47.99%	28.11%	6.02%	1.41%		64.46%
19.48%	44.58%	27.31%	6.02%	2.61%		64.06%
18.47%	44.98%	26.31%	7.43%	2.81%		63.45%
15.66%	45.98%	27.51%	9.84%	1.00%		61.65%
7.03%	47.59%	33.94%	8.63%	2.81%		54.62%
8.63%	45.58%	37.55%	7.03%	1.20%		54.22%
11.24%	42.37%	35.94%	8.63%	1.81%		53.61%
9.64%	43.78%	37.15%	7.03%	2.41%		53.41%
19.55%	33.08%	35.34%	12.03%	0.00%		52.63%
10.64%	41.37%	38.96%	7.83%	1.20%		52.01%
13.05%	36.95%	35.94%	11.65%	2.41%		50.00%
9.04%	40.76%	38.96%	38.96%	2.01%		49.80%
8.43%	40.36%	40.76%	8.63%	1.81%		48.80%
6.43%	39.36%	45.58%	6.83%	1.81%		45.78%
7.23%	38.35%	45.18%	6.22%	3.01%		45.58%
8.84%	36.55%	38.15%	14.66%	1.81%		45.38%
7.03%	37.35%	38.55%	12.25%	4.82%		44.38%
10.44%	33.33%	43.37%	10.24%	2.61%		43.78%
9.04%	34.54%	38.35%	16.67%	1.41%		43.57%
8.23%	34.74%	39.96%	14.46%	2.61%		42.97%
5.82%	37.15%	43.78%	10.84%	2.41%		42.97%
5.82%	36.75%	47.79%	8.23%	1.41%		42.57%
4.62%	35.54%	49.40%	8.84%	1.61%		40.16%
7.03%	32.73%	46.39%	11.24%	2.61%		39.76%
5.62%	33.53%	46.99%	12.05%	1.81%		39.16%
4.42%	33.53%	47.59%	11.85%	2.61%		37.95%
5.22%	31.33%	51.61%	9.44%	2.41%		36.55%
6.02%	29.92%	45.18%	17.87%	1.00%		35.94%
6.22%	29.12%	44.38%	17.87%	2.41%		35.34%
4.22%	30.32%	47.79%	14.46%	3.21%		34.54%
6.43%	27.91%	52.81%	8.63%	4.22%		34.34%
13.05%	19.88%	32.93%	32.13%	2.01%		32.93%
4.22%	26.91%	53.61%	12.85%	2.41%		31.12%
30.72%	0.00%	0.00%	66.67%	2.61%		30.72%
5.02%	25.30%	51.20%	16.67%	1.81%		30.32%
4.42%	25.10%	52.81%	14.26%	3.41%		29.52%
3.82%	25.55%	53.52%	14.29%	2.82%		29.38%
5.22%	23.09%	55.42%	14.26%	2.01%		28.31%
5.42%	22.29%	47.19%	20.88%	4.22%		27.71%
3.82%	21.89%	56.02%	14.66%	3.61%		25.70%
3.41%	20.08%	45.18%	28.31%	3.01%		23.49%
6.83%	13.65%	25.70%	50.60%	3.21%		20.48%
2.81%	14.86%	56.63%	22.29%	3.41%		17.67%
2.81%	14.06%	54.22%	25.70%	3.21%		16.87%
3.21%	7.83%	23.69%	62.85%	2.41%		11.04%

1	43	
2	41	
3	62	
4	42	
5	33	
6	35	
7	38	
8	47	
9	24	
10	25	
11	12	
12	16	
13	61	
14	14	
15	27	
16	40	
17	39	
18	56	
19	45	
20	17	
21	32	
22	11	
23	36	
24	26	
25	59	
26	34	
27	13	
28	28	
29	23	
30	37	
31	52	
32	29	
33	10	
34	46	
35	15	
36	57	
37	53	
38	30	
39	50	
40	49	
41	60	
42	18	
43	19	
44	31	
45	54	
46	55	
47	58	
48	20	
49	22	
50	48	
51	21	
52	44	
53	51	

				()	
289	143	46	12	490	3447
222	171	85	12	490	3231
28	32	16	4	80	3050
134	240	99	15	488	3010
127	230	87	22	466	2991
121	233	118	18	490	2933
95	265	113	17	490	2894
97	222	136	30	485	2796
93	234	123	41	491	2772
92	224	131	37	484	2767
82	239	140	30	491	2760
78	229	137	49	493	2682
26	44	47	16	133	2602
48	218	185	35	486	2574
56	211	179	43	489	2573
43	227	187	35	492	2565
53	206	194	39	492	2555
35	237	169	43	484	2545
65	184	179	58	486	2527
45	203	194	46	488	2506
42	201	203	43	489	2495
36	191	225	31	483	2480
32	196	227	34	489	2462
52	166	216	51	485	2452
35	186	192	61	474	2411
29	183	238	41	491	2407
44	182	190	73	489	2403
29	185	218	54	486	2389
41	173	199	72	485	2377
23	177	246	44	490	2365
35	163	231	56	485	2365
45	172	191	83	491	2365
32	139	263	43	477	2335
28	167	234	60	489	2333
26	156	257	47	486	2331
22	167	237	59	485	2313
21	151	238	72	482	2251
30	149	225	89	493	2243
31	145	221	89	486	2243
21	134	267	64	486	2230
22	125	263	71	481	2204
26	115	276	71	488	2197
19	127	266	71	483	2195
25	126	255	83	489	2190
19	109	279	73	480	2154
65	99	164	160	488	2141
27	111	235	104	477	2128
17	100	225	141	483	1986
14	74	282	111	481	1981
153			332	485	1946
14	70	270	128	482	1938
34	68	128	252	482	1759
16	39	118	313	486	1502

